

1953

## Tower 1953

UNE Library Services Westbrook College History Collection  
*University of New England, Maine, rgray@une.edu*

Follow this and additional works at: [http://dune.une.edu/wchc\\_yearbooks](http://dune.une.edu/wchc_yearbooks)

 Part of the [Cultural History Commons](#), [Social History Commons](#), [Women's History Commons](#), and the [Women's Studies Commons](#)

---

### Preferred Citation

Westbrook College History Collection, UNE Library Services, "Tower 1953" (1953). *Yearbooks*. 1.  
[http://dune.une.edu/wchc\\_yearbooks/1](http://dune.une.edu/wchc_yearbooks/1)

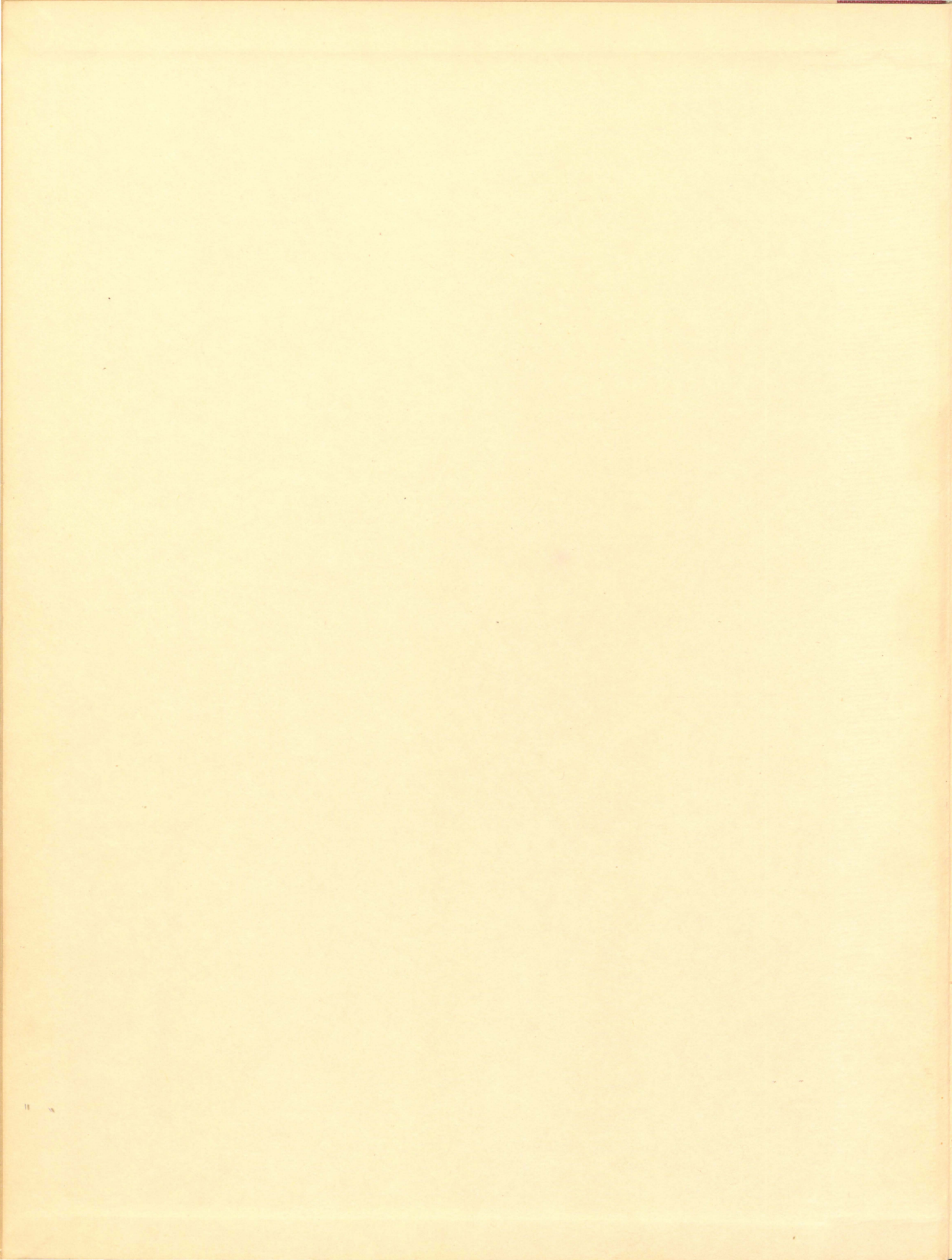
This Book is brought to you for free and open access by the Westbrook College History Collection at DUNE: DigitalUNE. It has been accepted for inclusion in Yearbooks by an authorized administrator of DUNE: DigitalUNE. For more information, please contact [bkenyon@une.edu](mailto:bkenyon@une.edu).



# The Tower









Alumni Office





# Westbrook Jun

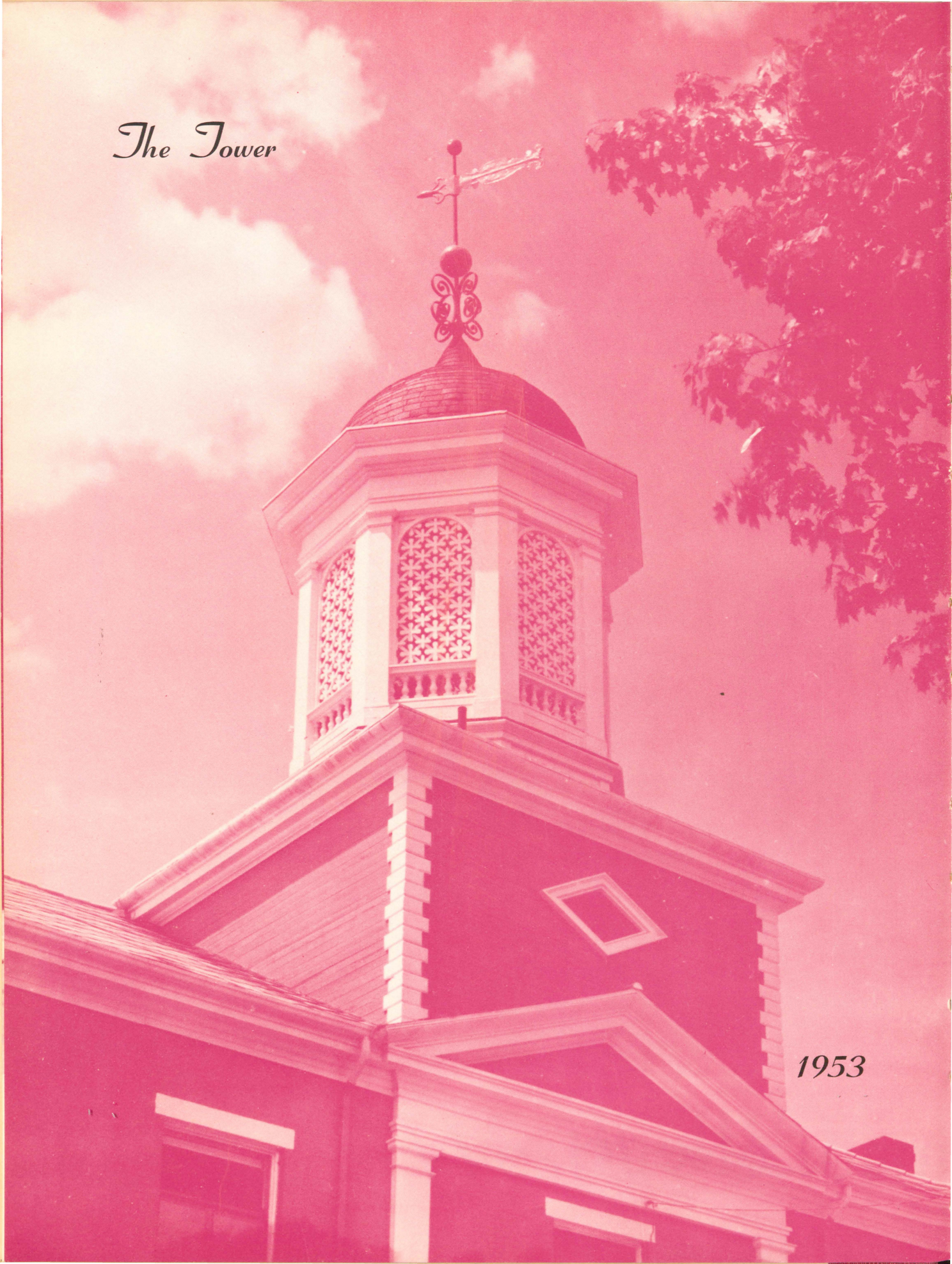




ior College



*The Tower*



1953



## *Editors*



Charlena Chase, Judith Lewis

## *Staff*



Joan Muffley, Charlena Chase, Judith Lewis,  
Nancy Waitt

Preparations were begun and staff selections made for the 1953 Tower in the fall of 1952. Months of picture taking, writeups, and copy reading followed.

Our work is finished. We now present your yearbook for inspection and safe keeping.

Artists were: Louisa Kreis and Joan Stanios.

Valuable assistance was rendered by Dorothy Brow, Barbara Comstock, Carolyn Etelman, Joanne Jackson, Patricia Libby, Sally Lothrop, Geraldine Mayo, Doreen Mitchell, Janice Pedro, Harriet Quarmby, Sonya Randolph, Joan Walsh, Priscilla Ward, Barbara Wilkes, and Barbara Haynes.

Louisa Kreis, Joan Stanios

## *Artists*

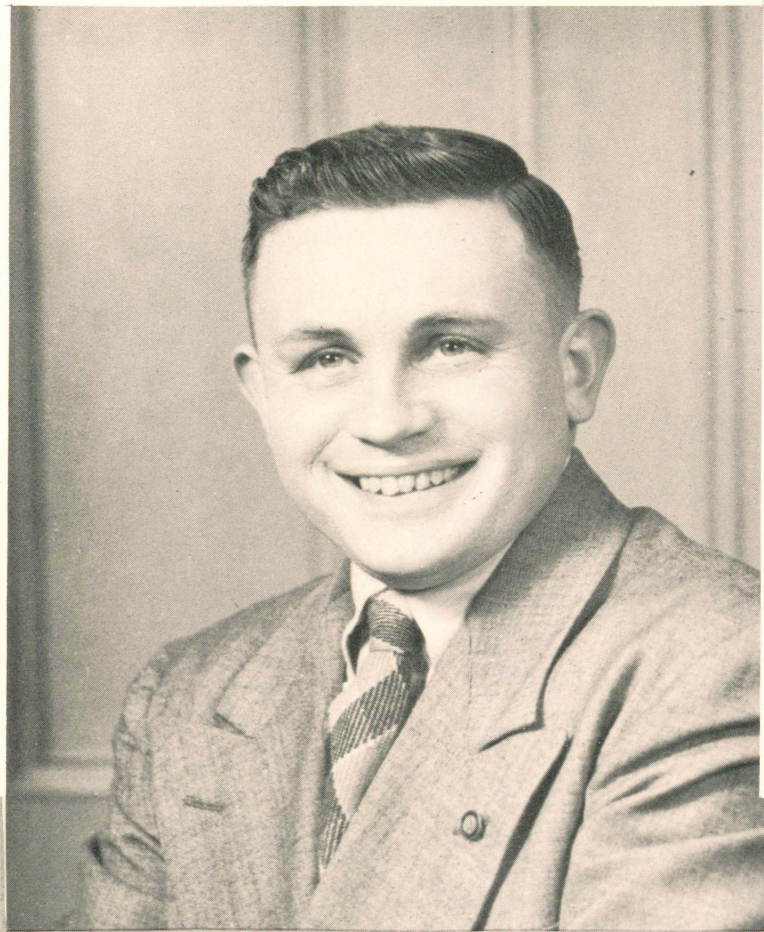




1953

D  
E  
D  
I  
C  
A  
T  
I  
O  
N

*Mr. Edward O. Hooghkirk*





Long devoted to the needs of the student and the objectives of the College, Mr. Hooghkirk has given freely of his time and energy. With Westbrook since 1948, Director of the Science Department since 1950, and promulgator of the best the College has to offer, Mr. Hooghkirk has been instrumental in the growth of the school and the maintenance of standards.

To Mr. Edward O. Hooghkirk—dynamite in a small package—we dedicate the 1953 TOWER.





## *The President*

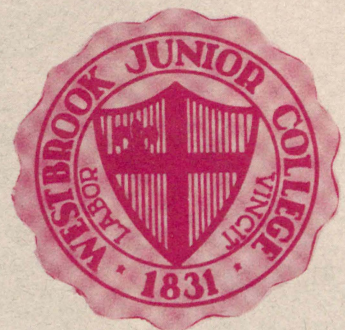
1953 marks twenty years of progress with Westbrook Junior College for Dr. Milton D. Proctor. Taking the helm in 1933 when enrollment was down and debt was up, the President infused the College with a new vitality.

As advancement warranted, additions in plant and staff were made, culminating with the completion of Proctor Hall in 1952.

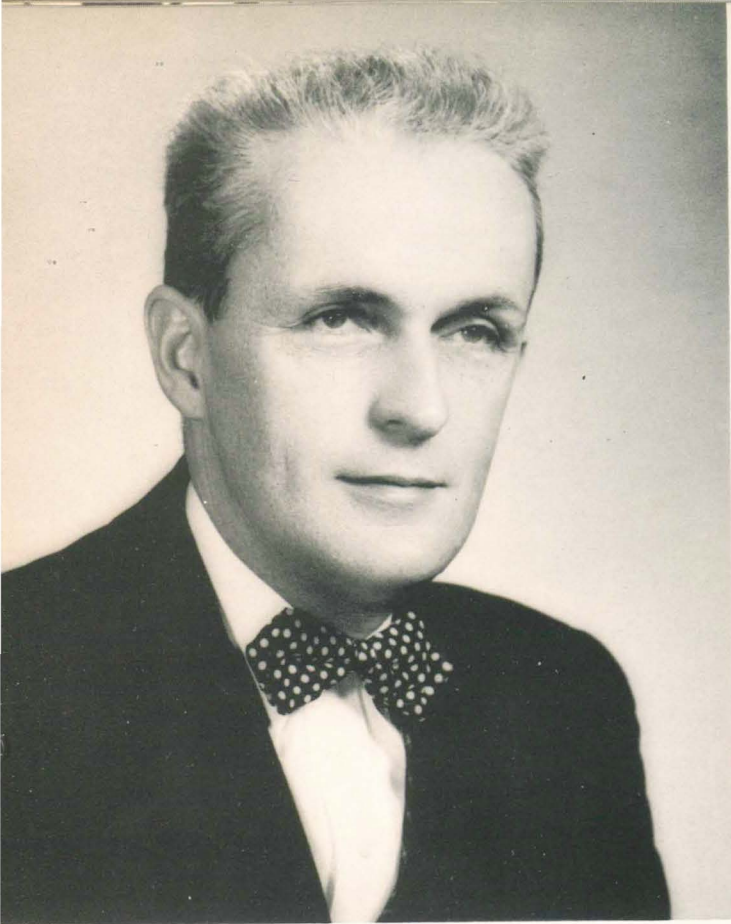
Intent, stable, and resourceful, Dr. Proctor advanced and elevated the cause of two-year higher education in Maine. His work will not be soon forgotten.



*Dr. Milton D. Proctor*







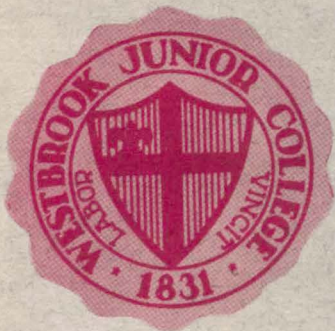
*Frank E. Hobson Jr.*

## *The Dean*

Coming to Westbrook after many years in secondary education, Frank E. Hobson joined as Head of the English Department in 1948.

Mr. Hobson's administrative ability was quickly recognized and in July, 1952, he was elevated to Dean of the College. Under Dean Hobson's leadership, cohesion between faculty, staff, and student has become more closely welded; the advisor-advisee system has been successfully introduced; student government has taken a leap forward.

Meticulous and devoted, no problem is too large, no detail too small for Dean Hobson. The Westbrook spirit is the fruitage of his labors.





*Director  
of  
Residence*

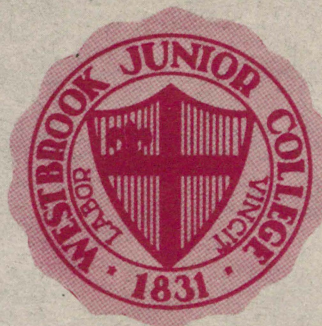


*Irene Kline*

Miss Irene Kline joined the Westbrook family in 1952 as Director of Residence.

Working closely with the Dean, Miss Kline helped to formulate the Orientation Program for the College. The Student Christian Association has been revitalized and strengthened. Individual house government has become a reality.

Her background in business and public relations makes a valuable contribution to parent-student-faculty understanding.







MISS JEAN BROWN  
Science Department



MR. MARSHALL BRYANT  
Director of Music Department



MISS CONSTANCE CURRY  
Director of Retailing

*Faculty 1953*

MRS. GEORGE CUSHMAN  
Clothing



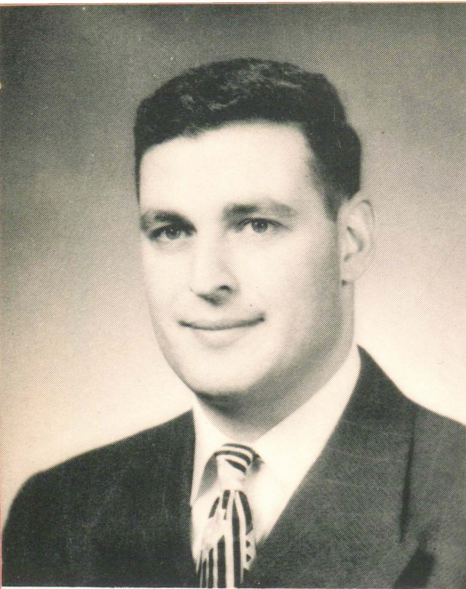
MISS MARILYN DANARD  
Music Department



MISS GRACE DOW  
English Department







MR. ARTHUR L. FREUNDLICH  
Head, Psychology Department



MRS. JOHN L. GORDON  
Secretarial Science



MR. JOHN L. GORDON  
Science Department

## *Faculty 1953*

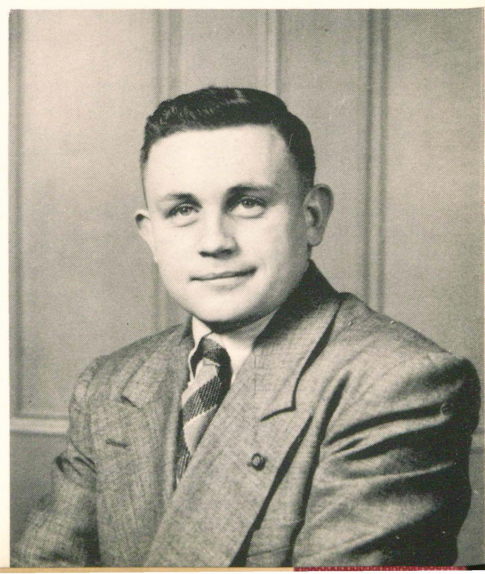
MR. THEODORE G. GRIDLEY  
Head, Journalism Department



MISS THELMA L. HILLSON  
Head, Secretarial Science



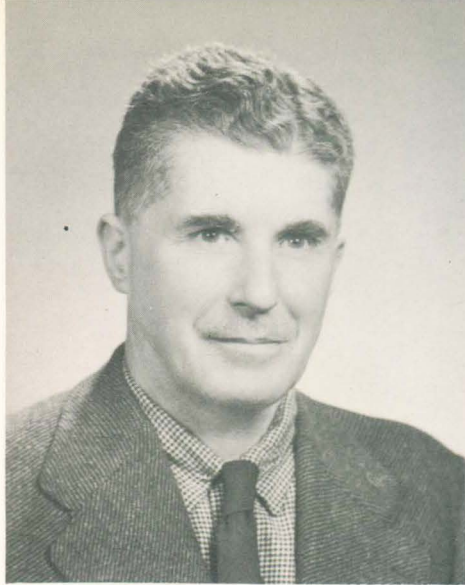
MR. EDWARD O. HOOGHKIRK  
Head, Science Department







MRS. LEE HUTCHINSON  
Secretarial Science



MR. ROBERT IMLAY  
History of Art, Pottery



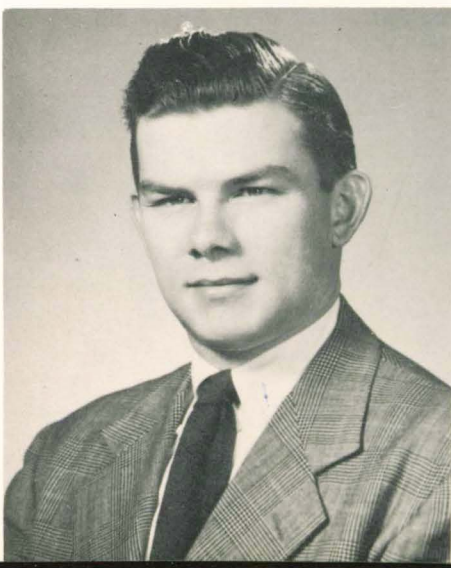
MR. ALBERT JACOBS  
Family Relations

*Faculty 1953*

MISS M. LUCILLE KIDDER  
Arts and Crafts



MR. ROBERT H. McNEILLY  
Head, Social Science Department



MISS MARY PIKE  
Librarian







MISS MARTHA A. PRATT  
Head, Physical Education



MISS LILLIAN PUTNAM  
Head, Foods, Clothing



MRS. ELLEN M. RAWLINSON  
Head, Language Department

## *Faculty 1953*

MR. HAROLD SCHNEIDERMAN  
Applied Sociology



MISS SARAH L. SILVERMAN  
Head, Speech Department



MISS BARBARA SPRING  
Assistant to Director of Residence







MISS EVELYN M. STINCHFIELD  
Secretarial Science



MISS LOIS E. STINSON  
Secretarial Science



MRS. CAROLINE TOWNSEND  
Reading Techniques

*Faculty 1953*





Left to Right: Barbara Laird,  
Resident Secretary; Rosalie  
Manson, Day Secretary.

# Senior Officers

Left to Right, Seated: Judith Chapman, Presi-  
dent; Barbara Gulian, Treasurer.

Left to Right, Standing: Geraldine Horsman,  
Vice-President; Barbara Laird, Secretary;  
Rosalie Manson, Day Secretary; Anastasia  
Raizes, Treasurer.

Standing, Rear: Mr. Arthur L. Freundlich,  
Advisor.

1953





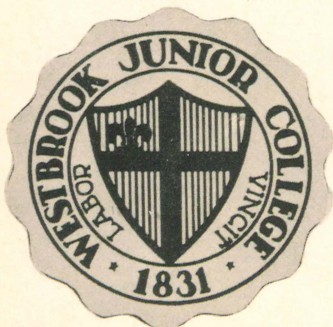





*Alumni Hall*

*The Tower*

*The Farm*







WESTBROOK  
JUNIOR  
COLLEGE  
*1831*

Seniors





NORMA JEAN AMSDEN  
"Norm"  
Laconia, New Hampshire  
*Medical Secretary*  
Masque and Candle 2; Outing Club  
1, 2; Science Club 1, 2.



LORRAINE BARCOMB  
Rochester, New Hampshire  
*Medical Secretary*  
Science Club 1, 2; Gray Team 1, 2;  
Masque and Candle 2; Outing Club  
1, 2.

LOIS JEAN BEARD  
"Lois"  
Groton, Massachusetts  
*Junior College General*  
Outing Club 1, 2; IRC 1.





LOIS ADELE BLUESTEIN  
Swampscott, Massachusetts  
*Medical Secretarial*  
Masque and Candle 2; Outing Club  
2; Interhouse Volleyball 2; Basket-  
ball 2.



DORIS GARDNER BIGELOW, JR.  
"Doe"  
Harvard, Massachusetts  
*Pre X-Ray Technician*  
Outing Club 1, 2; Science Club 1,  
2; House Secretary 1, 2; Riding  
Club 1, 2.



DOLORES BARBARA BOULAY  
"Dee"  
Lewiston, Maine  
*Secretarial Science*  
Outing Club 1, 2; Masque and Can-  
dle 2; IRC 2; House Committee 2;  
Interhouse Basketball 1, 2; House  
Volleyball 1, 2.







DOROTHY ANN BUDUO  
"Dot"  
Worcester, Massachusetts  
*Junior College General*  
Outing Club 1, 2; Science Club 1,  
2; Riding Club 1, 2.



BRITT LOUISE CARLSON  
Hartford, Connecticut  
*Retailing*  
Retailing Club 1, President 2; Out-  
ing Club 1, 2; Melville, House  
Representative.



SHIRLEY ANNE CARY  
"Shirl"  
Greenfield, New Hampshire  
*Music*  
Glee Club 1, 2; Science Club 2;  
Dramatic Club 1, 2; IRC 2; Outing  
Club 2; House President 1; Inter-  
house Volleyball; Student Council  
1; House Representative 2.



CHARLENA CHASE  
"Charlie"

Portland, Maine

*Journalism*

Glee Club 2; Librarian 1; W. J. C. News 2; TOWER, Editor 2; Student Christian Association 1; International Relations Club 1.

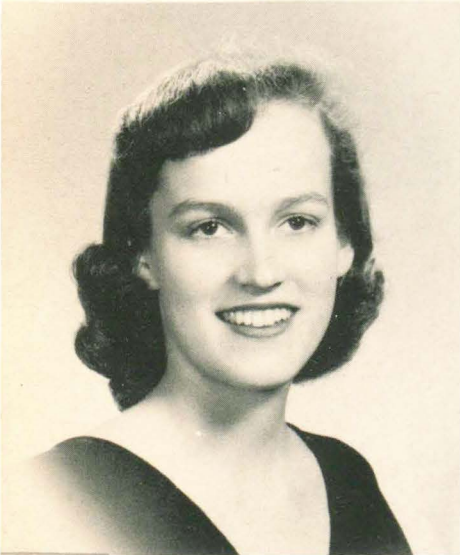


JUDITH CHAPMAN  
"Chap"

Marblehead, Massachusetts

*Secretarial Science*

Secretary, Freshman Class; President, Senior Class; Jay-Dee; Hockey 1, 2; Outing Club 1, 2; Glee Club 1; Interhouse Basketball; Volleyball 1, 2; Riding Club 2; May Court 1; Dance Committee 1, 2.



MAXINE CHRISTENSON  
"Chris"

West Caldwell, New Jersey

*Retailing*

Retailing Club 1, 2, Vice President 1; Outing Club 1, Council 2; Masque and Candle 2; IRC 2; Fire Warden 2; Interhouse Badminton, Basketball, Volleyball 1, 2; SCA 2; House Committee 2; Maroon and Gray Sports 1, 2.







CHRISTINA DOROTHY COLELLO  
"Tina"

Portland, Maine

*Medical Secretary*

Science Club 1, 2; President of Day Hops; Volleyball 1, 2; Badminton 1; Treasurer of Day Hops 1; Skit Committee 2; Jay-Dee 2; Outing Club Council 1.



MARY PAULINE COUNTY  
"Countess"

Lewiston, Maine

*Liberal Arts*

Masque and Candle, Vice President 1, President 2; House Social Chairman 2; Freshman-Senior Competition Plays 1; Interhouse Volleyball, Basketball 1, 2.

JAYNE W. CROCKETT  
"Cricket"

Springfield, Massachusetts

*Secretarial Science*

Masque and Candle 2; IRC 2; Interhouse Volleyball 2; House Secretary 2; Christmas Play 2; Outing Club 2.





JANICE T. CUTTING  
"Jan"

Presque Isle, Maine

*Junior College General*  
Outing Club 1, Vice President and  
Council 2; Riding Club 1, Treasurer  
2; Ski Team 1, 2; Volley Ball 1, 2;  
Softball 1, 2.



LILLIAN MAY CURTIS  
"Lil"

Belfast, Maine

*Retailing*  
Retailing Club 1, 2; Basketball J.  
V.'s 1; Interhouse Sports 1, 2.

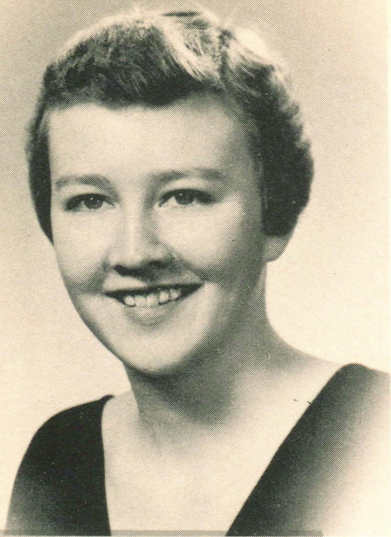


PATRICIA MARIE DOWNING  
"Patsy"

Winthrop, Massachusetts

*Medical Secretary*  
Outing Club 1, 2; Science Club 1,  
2; Masque and Candle 2; Deering  
House President 2; Student Council 1.

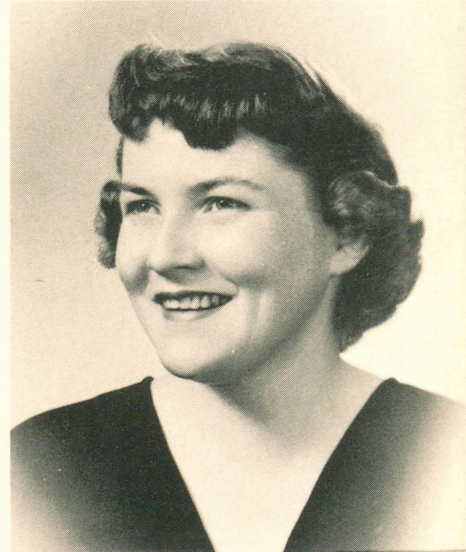




ELEANOR BRAGG EAMES  
"Ellie"

Bangor, Maine

*Secretarial Science*  
Jay-Dee President 2; House President 2; Varsity Basketball 1, 2; All-Star Volleyball 1; Outing Club 1, 2, Council 2.



NANCY JANE ELDER  
"Nance"

Manchester, Connecticut

*Pre-Professional Nursery School*  
Science Club 1, 2; Outing Club 1, 2, Council 2; International Relations Club 2; Glee Club 1; Student Council Secretary 1; Riding Club 2; S. C. A. 2.



PHYLLIS M. ESTY  
"Phyl"

Westbrook, Maine

*Arts and Crafts*  
Interhouse Sing 2; Winter Carnival Skit 1, 2; Halloween Skit 2.

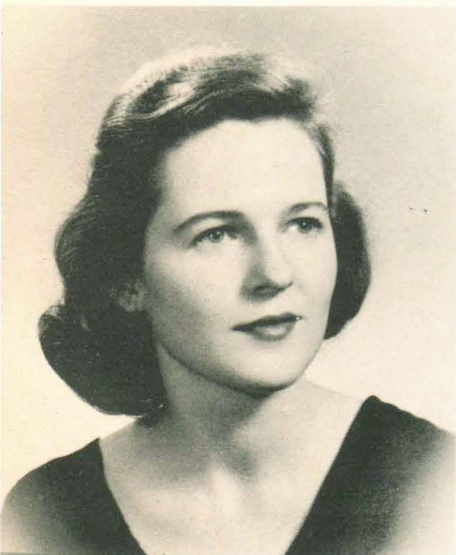


MARY ELLEN FLAHERTY  
"Mel"

White Plains, New York

*Secretarial Science*

President of Freshman Class; Treasurer, W. A. A. 1; Jay-Dee; Varsity Basketball 1, 2; Glee Club 1; Masque and Candle 2; Riding Club 2; Outing Club 1, 2; Interhouse Volleyball 1, 2; Gray Team 1, 2.



PATRICIA OWEN FEID  
"Pat"

North Attleboro, Massachusetts

*Retailing*

Outing Club 1, 2; Retailing Club, Treasurer 1, Social Chairman 2; Fire Warden 1, 2.



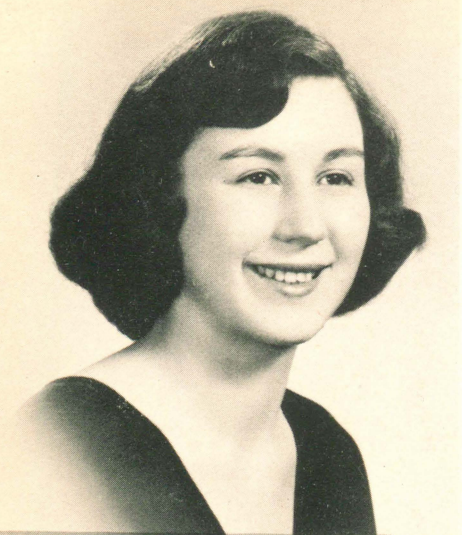
HELENE M. FINK  
"Sis"

Portland, Maine

*Pre-Medical Technique*

Science Club 1, 2; Outing Club 1; Masque and Candle 1; House Volleyball 1, 2.





DORRINE S. FOSTER  
Manchester, New Hampshire  
*Liberal Arts*  
Science Club 1, 2; Masque and  
Candle 1, 2.



JOANNE R. FRITZ  
"Jo"  
Reading, Massachusetts  
*Junior College General*  
Riding Club 1; Masque and Candle  
2; Outing Club 2; Science Club 2;  
Gray Team 1, 2.



MARILYN MARY GEORGE  
"Bobby"  
Worcester, Massachusetts  
*Pre-Medical Technique*  
Science Club 1, 2; Executive Board  
1; Outing Club 1, 2; Gray Team 1,  
2; Interhouse Sports, Volleyball,  
Basketball.



JEAN GREGAN  
"Jeanie"

Greenville, Maine

*Junior College General*  
Outing Club 1, 2; Masque and Candle 1, 2; Interhouse Sports 1, 2; Maroon and Gray 1, 2.



ELAINE MARY GOODREAU  
"Lane"

Rye Beach, New Hampshire

*Medical Secretary*  
Science Club 1, 2; House Treasurer 1; Masque and Candle 2; Outing Club 1, 2; Interhouse Volleyball and Basketball 1, 2.



MARY LUCIA GROVER  
"Looch"

Westbrook, Maine

*Pre-Professional Nursery School*  
Outing Club 1, 2; Day Social Committee 1, 2.



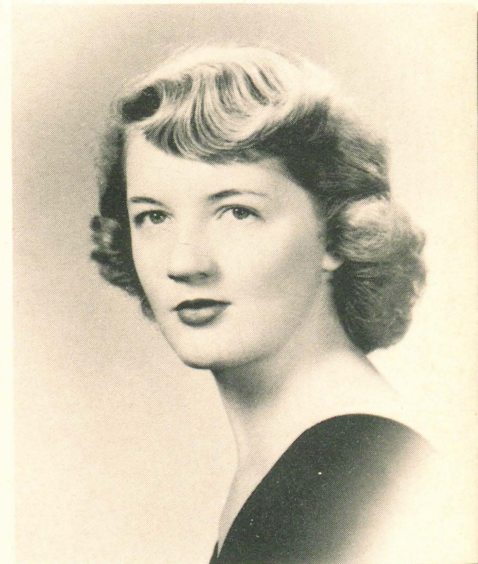


BARBARA GULIAN  
"Goul"

Portland, Maine

*Liberal Arts*

Outing Club 1, 2, Council President  
2; Masque and Candle, Secretary  
1; Hockey Varsity 1; Basketball  
Team 1, 2; Softball Team 1, 2; In-  
terhouse Volleyball 1, 2; Senior  
Class Treasurer 2.

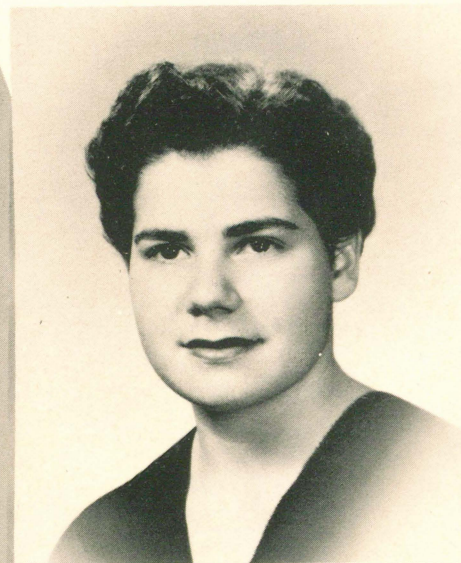


BEVERLY FLORENCE HIBBERT  
"Bev"

Touisset, Massachusetts

*Medical Secretary*

Field Hockey 1, 2; Basketball Var-  
sity 1, 2; Softball 1, 2; Interhouse  
Volleyball 1, 2; Student Christian  
Association 1, 2; Science Club 2;  
Masque and Candle 2; Outing  
Club 1.



IRMA FRANCES HIRSCH  
"Hirshey"

Chestnut Hill, Massachusetts

*Retailing*

Retailing Club 1, 2; Varsity Hockey  
1, 2; Glee Club 1; Outing Club 1,  
2; Masque and Candle 1, 2; Ski  
Team 1, 2; Interhouse Sports 1, 2.

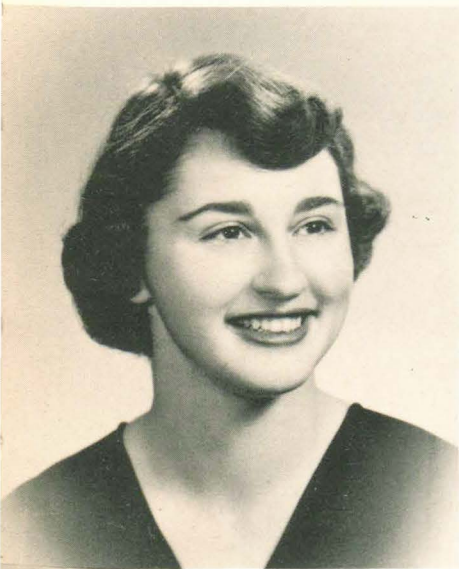


FRANCES MARIE KEATING  
"Frannie"

Wellesley, Massachusetts

*Medical Secretary*

Outing Club 1, 2; Masque and  
Candle 2; Glee Club 1; Student  
Christian Association 1, President  
2; Interhouse Volleyball 1, 2.



GERALDINE ANNE HORSMAN  
"Gerry"

Portland, Maine

*Secretarial Science*

Jay-Dee; Masque and Candle 1, 2;  
Glee Club 2; Student Council 1;  
Student Christian Association 2;  
Senior Class Vice President 2; Out-  
ing Club 1.

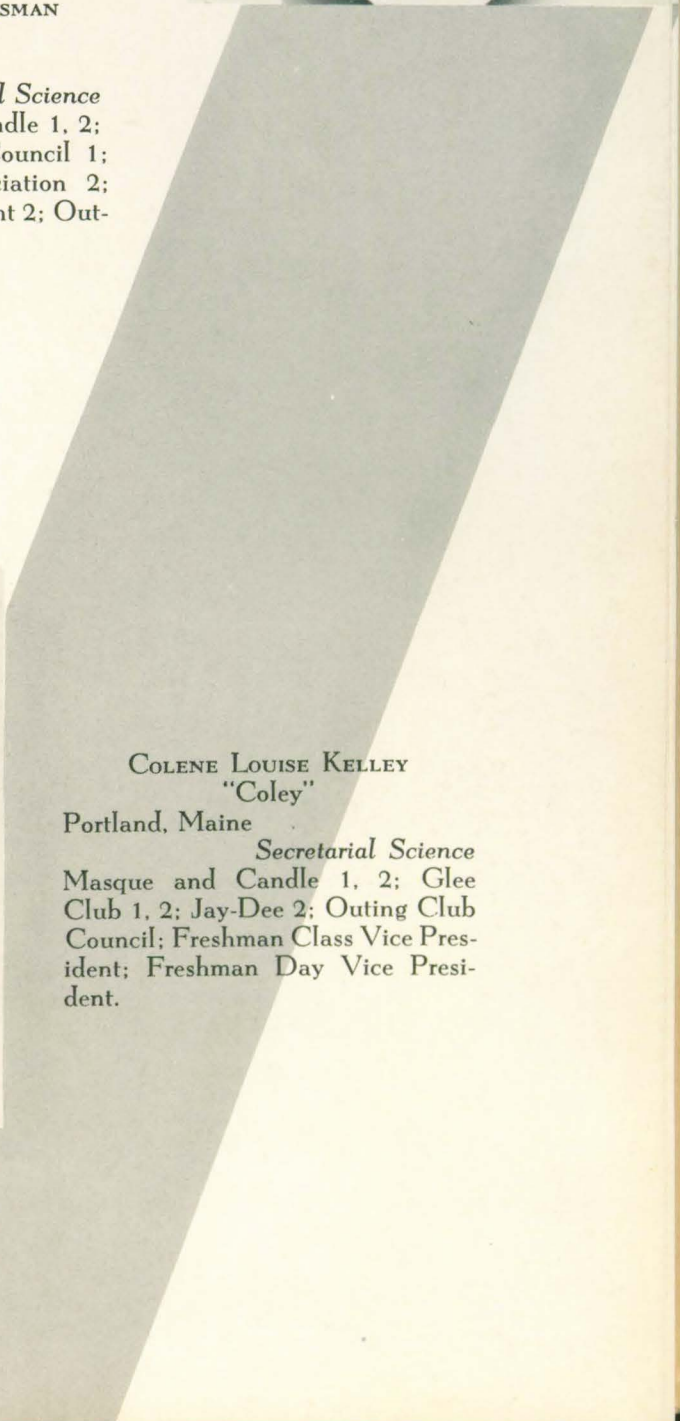


COLENE LOUISE KELLEY  
"Coley"

Portland, Maine

*Secretarial Science*

Masque and Candle 1, 2; Glee  
Club 1, 2; Jay-Dee 2; Outing Club  
Council; Freshman Class Vice Pres-  
ident; Freshman Day Vice Presi-  
dent.







JOYCE MARILYN KELLEY  
"J. K."

Westbrook, Maine

*Liberal Arts*

*Westbrook News* Staff 1; Glee Club  
1, 2; Freshman Class Day Treasurer  
1; Jay-Dee Secretary 2; S. C. A. 2;  
Student Council Special Committee  
2; Outing Club Council 1, 2.



LUISA KREIS

Essex, Connecticut

*Junior College General*

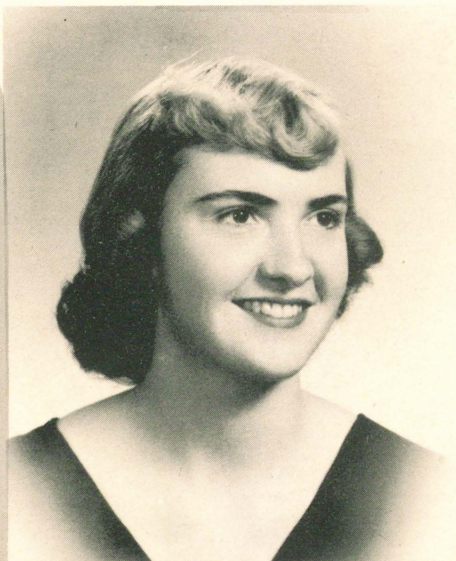
*Westbrook Junior College News* 1;  
THE TOWER 2; Tennis Team 1, 2;  
Jay-Dee 2; Melville House Presi-  
dent; Glee Club 1.

BARBARA JEAN LAIRD  
"Barb"

Winchester, Massachusetts

*Medical Secretary*

Outing Club Council 1, 2; Riding  
Club 1; Class Secretary 2; Jay-Dee;  
Science Club 1, 2; House Social  
Committee 2; Masque and Candle  
1.





PATRICIA LEIGH  
"Pat"

Portland, Maine

*Secretarial Science*  
Dramatic Club 1; Outing Club 1, 2.



JOAN M. LAMOND

Fall River, Massachusetts

*Pre-Medical Technique*  
Science Club 1, President 2; Outing  
Club 1, Council 2; Jay-Dee 2; Var-  
sity Field Hockey 1; Interhouse  
Sports 1, 2.



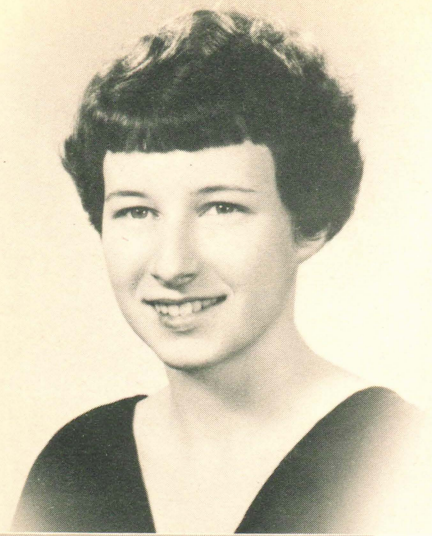
DORIS MARY LEVESQUE  
"Dot"

Sanford, Maine

*Pre-Medical Technique*  
Outing Club 1; Class Secretary 1;  
Science Club Treasurer 2; Jay-Dee  
2; Day Social Committee 1, 2.



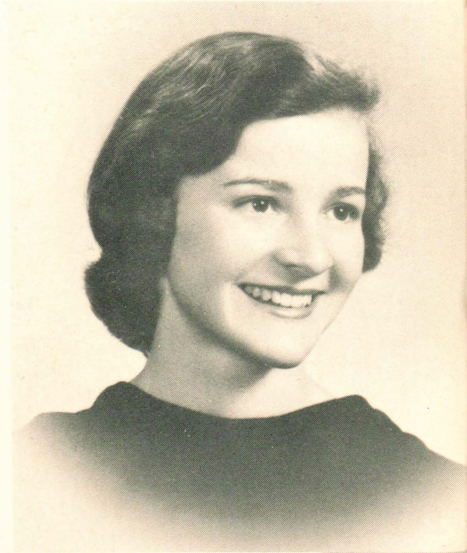




SHIRLEY ANN LITCHFIELD  
"Shir"

Ellsworth, Maine

*Business Course*  
Outing Club 1, 2; Varsity Basketball 1, 2; House Treasurer 2; Interhouse Sports 1, 2; Gray Team.



JUDITH ANN LEWIS  
"Judy"

Beverly, Massachusetts

*Junior College General*  
House Vice President 1, 2; W. A. A. Gray Leader 1, 2; Jay-Dee Vice President 2; W. J. C. News, Assistant Sports Editor 1, Business Manager 2; TOWER, Sports Editor 1, Editor 2; Varsity Field Hockey 1, 2; Tennis 1, 2; Outing Club 1, 2; S. C. A. 2; Interhouse Sports 1, 2.



LOUISE MARIE McCRAY  
"Weasel"

Rumford, Maine

*Medical Secretary*  
Science Club 1, 2; Outing Club 1, 2; Masque and Candle 2.



ROSALIE LOUISE MANSON  
"Rose"

Brunswick, Maine

*Medical Secretary*

Interhouse Sports, Captain 2; Day  
Hop Secretary 2; Volleyball 1; Sen-  
ior Class Secretary; Outing Club 1;  
Science Club 2.



HELEN R. McLEISH  
"Scotty"

Newport, Rhode Island

*Retailing*

Outing Club 1; Retailing Club 2;  
Masque and Candle 2; I. R. C. 2;  
House Sports 1, 2; Fire Warden 1;  
S. C. A. 2; May Pageant.



ANNE ELIZABETH MARCHI  
"Annie"

Portland, Maine

*Medical Secretary*

Volleyball 1, 2; Science Club 2.







CAROLYN ANN MERRILL  
"Carol"  
Winchendon, Massachusetts  
*Secretarial Science*  
Masque and Candle 1, 2; Outing  
Club 1, 2.



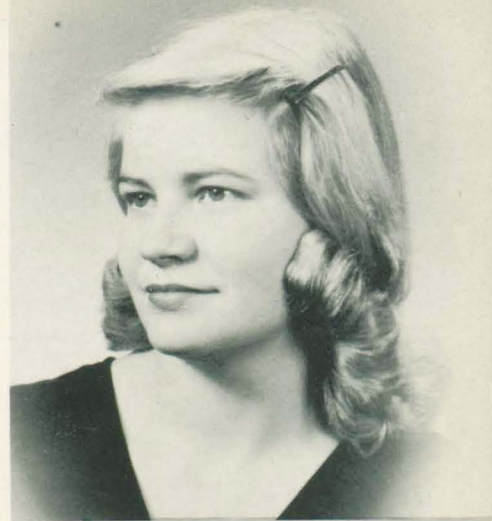
JOAN FRANCES MUFFLEY  
"Muff"  
Belfast, Maine  
*Journalism Secretary*  
Outing Club 1; I. R. C. 1, President  
2; *W. J. C. News*, Assistant Feature  
Editor 1, Editor 2; *TOWER*, Biogra-  
phy 1, Literary and Picture Editor  
2; House Treasurer 2; Interhouse  
Volleyball 1, 2; Gray Team 1, 2.



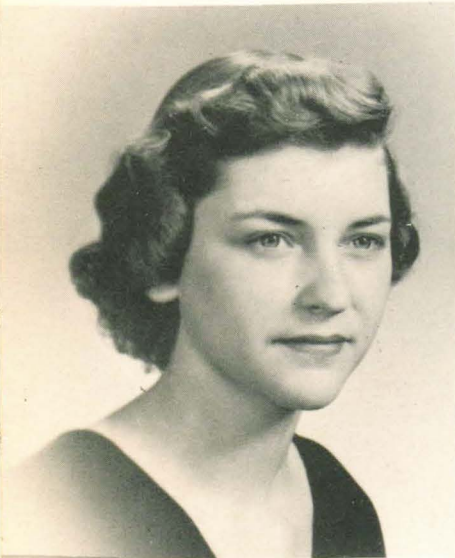
ROBERTA MUSKAT  
"Bobbie"  
Haverhill, Massachusetts  
*Medical Secretary*  
Outing Club 1, 2; Masque and Can-  
dle 1, 2; Science Club 2.



KATHLEEN BEATRICE OLSEN  
"Kay"  
Cape Elizabeth, Maine  
*Retailing*  
Retailing Club 1, 2; Outing Club 1,  
2; Outing Club Council 2.



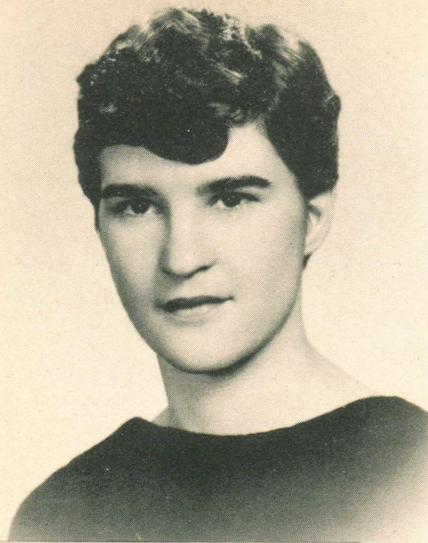
ELEANOR NICKERSON  
"Ellie"  
Portland, Maine  
*Junior College General*  
Retailing Club 2; Masque and Can-  
dle 1; Outing Club 2; Maroon and  
Gray 1, 2; Freshman Skits.



BARBARA C. PALMER  
"Barb"  
Portland, Maine  
*Medical Secretary*  
Science Club 2; Volleyball 2.







MARIE ADELINE PANGIA  
"Panda"  
Stamford, Connecticut  
*Pre X-Ray Technician*  
Outing Club 1; Outing Club Council 2; Science Club 1, 2; Vice President of Melville 2; Fire Warden 2.



BARBARA ANNE PEDINI  
"Barb"  
Mansfield, Massachusetts  
*Business*  
Riding Club 2; Outing Club 1, 2; Outing Club Council 2; Masque and Candle 1, 2; House Social Committee 2; House Fire Chief 2.



VIRGINIA RAE PILLSBURY  
"Ginny"  
Derry, New Hampshire  
*Medical Secretary*  
Outing Club 1, 2; S. C. A. 2; Science Club 2; Masque and Candle Treasurer 2.



MARLENE DONNA RAKOFSKY  
"Marl"

Haverhill, Massachusetts

*Retailing*

Retailing Club 1, 2; Masque and  
Candle 1; Outing Club 1, 2; Volley-  
ball 1.



ANASTASIA RAIZES  
"Stasa"

Rochester, New Hampshire

*Medical Secretary*

Science Club 1, 2; Outing Club 1;  
Interhouse Sports, Volleyball, Bas-  
ketball; House Treasurer 1; Class  
Treasurer 2; Jay-Dee; Varsity Soft-  
ball 1; Maroon Team.



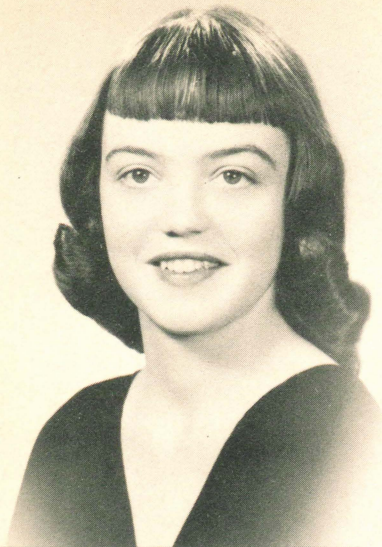
CAROLYN RICHARDS  
"Richie"

Rockport, Maine

*Secretarial Science*

Masque and Candle 1, 2; Glee Club  
1; Student Christian Association 2;  
International Relations Club 2; Bas-  
ketball Varsity 1, 2; W. A. A. Ma-  
roon Leader 2.





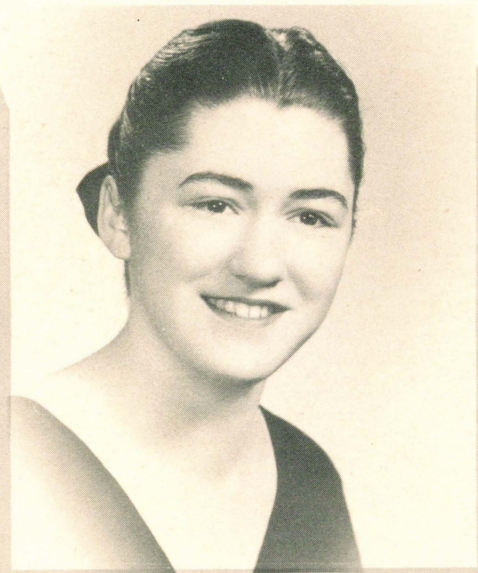
JEAN DENISE ROCHFORD  
"Roch"

Springfield, Massachusetts  
*Pre-Medical Technique*  
Glee Club 1, President 2; Outing  
Club 1, 2; Science Club 1, 2, Vice  
President 1; Interhouse Volleyball  
1, 2; Masque and Candle 2; Dance  
Committees.



SHIRLEY IRENE ROGERS  
"Shirl"

Yarmouth, Maine  
*Junior College General*  
Glee Club 1; Student Christian As-  
sociation 1, 2; International Rela-  
tions Club 1, 2; Varsity Basketball  
1, 2; Interhouse Sports 1.



SUZANNE SMITH SARRA  
"Sue"

Swampscott, Massachusetts  
*Junior College General*  
Outing Club 1, 2; W. A. A. Secre-  
tary 2; House Fire Chief 1, 2; Var-  
sity Basketball, Hockey, Tennis and  
Ski Teams 1, 2; Interhouse Volley-  
ball 1, 2; All-Star Basketball 1, 2,  
Captain 1; Glee Club 1; Maroon  
and Gray Basketball, Softball and  
Volleyball 1, 2.



BETTY JEAN SMITH  
Saco, Maine  
*Pre-Medical Technique*

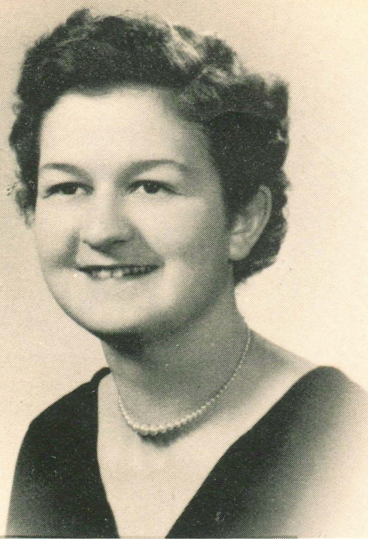


IMOGENE M. SCAMMON  
"Imy"  
Portland, Maine  
*Liberal Arts*  
Science Club Secretary 1, 2; Student  
Christian Association 1, 2; Inter-  
national Relations Club.



ELIZABETH ANN SMITH  
"Betty"  
South Portland, Maine  
*Retailing*  
Retailing Club 1, 2; Freshman Skit;  
Outing Club 2.





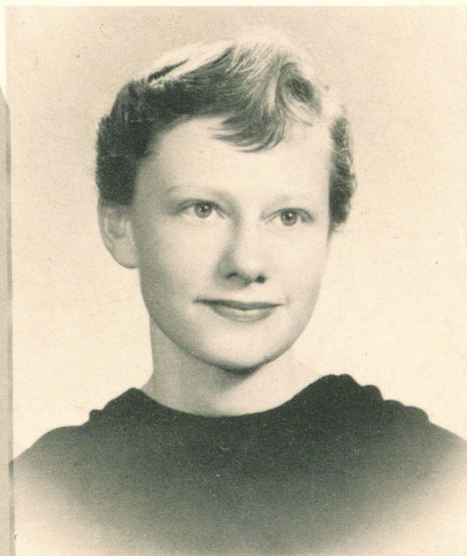
JEANNETTE MAUREEN SMITH  
"J"

Chester, New Hampshire  
*Medical Secretary*  
Outing Club 1, 2; Science Club 1,  
2; Masque and Candle 2; S. C. A.  
2.



VIRGINIA SHIRLEY SMITH  
"Gin"

Westbrook, Maine  
*Medical Technique*  
Outing Club 1; Maroon and Gray  
1, 2.



GEORGIA STANLEY  
"George"

Andover, Massachusetts  
*Pre-Professional Nursery School*  
Hockey Varsity 1, 2; Ski Team 1,  
2; Outing Club 1, Secretary 2; Sec-  
retary of International Relations  
Club 2; Jay-Dee 2.



CAROLYN STEEVES  
"Lyn"  
West Falmouth, Maine  
*Junior College General*



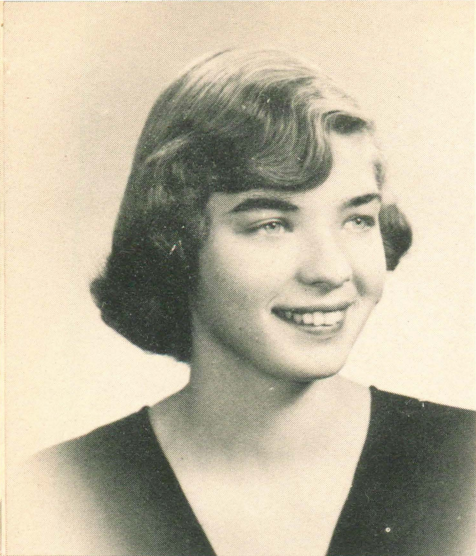
JOAN AUDREY STANIOS  
"Splan"  
Brockton, Massachusetts

*Liberal Arts*  
Masque and Candle 1, 2; Play  
Reading Committee 1; Outing Club  
1, 2; TOWER, W. J. C. News, Art  
Work; Dance Committees, Winter  
Carnival Decorations, Chairman 1,  
2; Student Government House Rep-  
resentative 2; Competition Plays 1,  
2.



NORMA LOUISE STRONG  
"Norm"  
Manchester, Connecticut  
*Retailing*  
Outing Club 1; Masque and Candle  
1; Retailing Club 1, 2; Secretary 2.

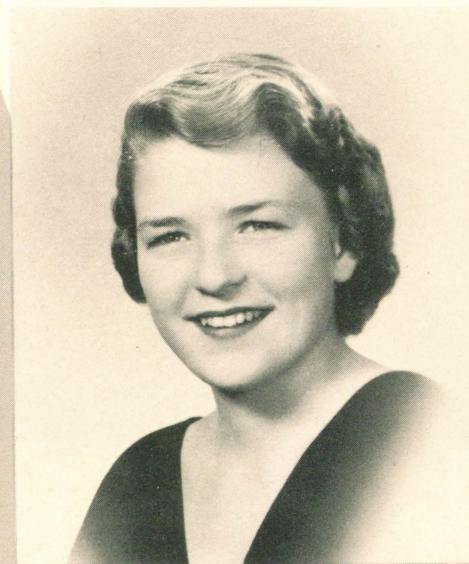




JULIA LUCRETIA STODDARD  
"Judy"  
Simsbury, Connecticut  
*Pre-Medical Technique*  
Science Club 1, 2; Outing Club 1,  
Treasurer 2; Bell House Secretary;  
Fire Warden 1, 2; Interhouse  
Sports.



MURIEL FRANCES TABACHNICK  
"Mush"  
Portland, Maine  
*Pre-Medical Technique*  
Science Club 1, 2.



CAROL UPTON  
"Uppie"  
Marblehead, Massachusetts  
*Secretarial Science*  
Outing Club 1, 2; Glee Club 1;  
Varsity Hockey, Basketball 1, 2; Ski  
Team 1, 2; W. A. A. Maroon Lead-  
er 1, President 2; Jay-Dee Softball  
1, 2; Vice President Hersey 1; Dance  
Committees 1, 2.



NANCY E. WAITT  
Westbrook, Maine  
*Journalism Secretarial*  
TOWER Staff 2; Outing Club 1, 2;  
Skits 1, 2; Interhouse Sing 1, 2; W.  
J. C. News, News Editor 2.



ANGELA ANNE VANGELI  
"Ange"  
Lewiston, Maine  
*Medical Secretary*  
Outing Club 1, 2; Interhouse Vol-  
leyball, Basketball, Badminton,  
Varsity Softball, Hockey 1, 2;  
Masque and Candle 2; Science Club  
2; W. A. A. Volleyball Manager 2.



JOAN MARIE WEDLOCK  
"Laura"  
Fairfield Connecticut  
*Medical Secretary*  
Outing Club 1, Council 2; Masque  
and Candle 1, Secretary 2; Hockey  
1; House Vice President 2; Three-  
Act Play 1 Christmas Pageant 1.





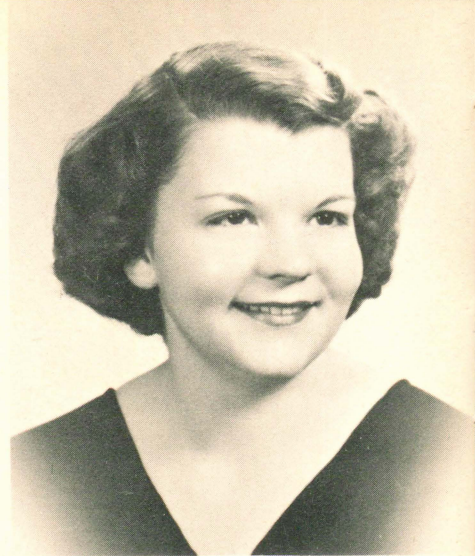


FRANCES GWEN WEISBERG  
"Frannie"

Portland, Maine

*Medical Secretary*

Science Club 1, 2; Dramatic Club  
1, 2; House Volleyball 1, 2.



JOAN FRANCES WHALEN  
"Jo"

Concord, New Hampshire

*Secretarial Science*

Masque and Candle 2; Outing Club  
1, 2.

AUDREY A. ELLIOTT  
"Yerdua"

Winchester, Massachusetts

*Secretarial Science*

Glee Club 1; Competition Plays 1;  
Outing Club 1, Council 2; Riding  
Club 2; House Council 2.

GEORGIA E. DIALLINA  
"Gogo"

Iraklion-Krete, Greece

*General*

Outing Club 1, 2; Student Council  
1.







First row, left to right: Carol Upton, Judy Chapman, Joan Lamond.  
 Second row, left to right: Stasa Raizes, Georgia Stanley, Eleanor Eames,  
 Joyce Kelley, Dean Hobson, Christina Colello.  
 Third row: Colene Kelley, Geraldine Horsman, Mary Ellen Flaherty,  
 Barbara Laird, Luisa Kreis.

The Junior Deans are a new organization at Westbrook Junior. The fifteen Jay-Dees function as an advisory group to the students and faculty and attempt to alleviate pressing school problems that are brought to their attention.

The girls meet with the Dean the first and last Friday of every month. This year they sponsored a lecture series for the benefit of the Furniture Fund.

The Jay-Dees also take an active part in guiding prospective students, their parents, and other guests about the campus. Early in the fall the Jay-Dees attended a tea for students in the Portland area who are interested in attending Westbrook Junior. They discussed the academic and social functions of the school.

To be chosen a Junior Dean is one of the highest honors it is possible to achieve at Westbrook and it is hoped that the organization will become a firmly rooted tradition in years to come.

## *Junior Deans*

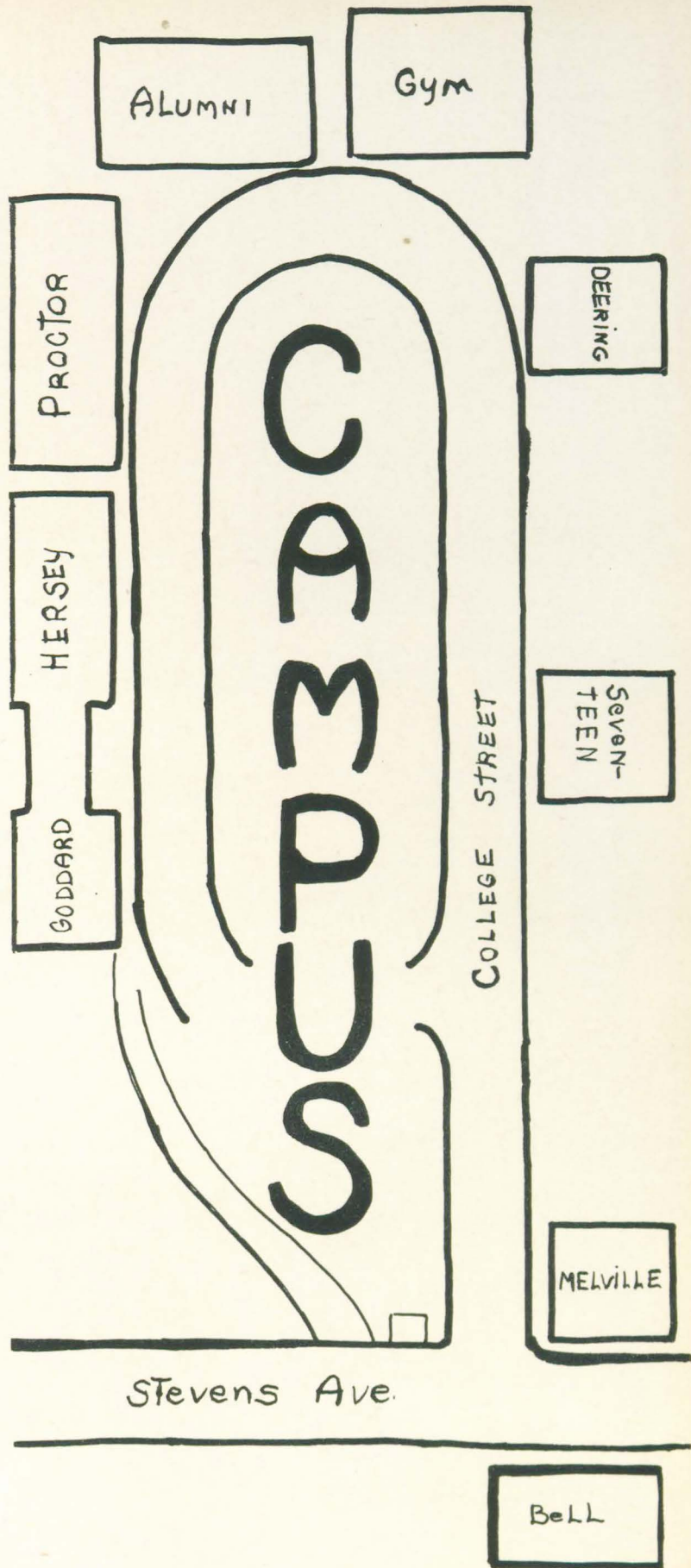
Left to right: Eleanor Eames, President; Judith Lewis, Vice-President;  
 Joyce Kelley, Secretary; Georgia Stanley, Treasurer.















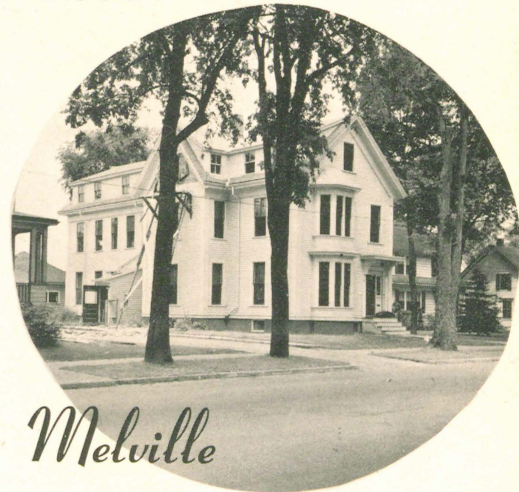
Back row, left to right: Dorothy Budvo, Pat Fied, Irma Hirsch, Norma Strong, Lois Bluestein.  
 Front row: Joan Whalen, Doris Bigelow, Marie Pangia, Britt Carlson.



The year at Melville is over—but we'll always have something to remember. Now that we are happy slaves to our various careers, we often think of the "Flop Room" and those famous bull sessions.

The argyle establishment and its multi mistakes . . . Dot, Doe, and Joan our knitting experts . . . CATCHER IN THE RYE—our favorite book of the year . . . The dogs that never really went . . . Just how do you spell cat? KEWERTZZI! . . . "Phone for Lies!" . . . Hair Toupee—Gone tomorrow. Our yearly subscription to SMUT AND PONTOON . . . Luisa, our Nantucket advertiser . . . Marie, our badminton champ . . . Pats' transferring to Brown . . . Irma and her weekends . . . Britt, our representative of KDR . . . "Now don't get hypertensed!" FOR GOD, FOR COUNTRY, AND FOR YALE! . . .

MEET YOU UNDER THE "CLOCK!"



*Melville*





Seated, left to right: Barbara Pedini, Shirley Litchfield, Judy Stoddard, Eleanor Eames, Joan Wedlock, Audrey Elliot, Georgia Stanley.  
 Standing: Joan Stanios, Jean Rochford, Jan Cutting, Judy Chapman, Mary Ellen Flaherty, Barbara Laird, Roberta Muskat, Nancy Elder, Lois Beard, Carol Upton, Joan Lamond.



*Bell*

The Belles have had quite a successful year—winning such things as the Halloween skits, Interhouse volleyball, and honorable mention for Winter Carnival skits.

Our house officers, Ellie, President; Laura, Vice-President; Judy, Secretary; Shirl, Treasurer; and Audrey, Social Chairman, have led us to a memorable year.

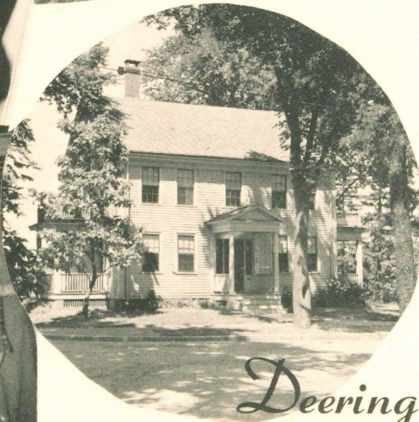
We are the girls who make up Bell House, along with our two swell housemothers, Miss Evelyn Stinchfield and Miss Barbara Spring.





Back row, left to right: Sue Sarra, Carolyn Richards, Lillian Curtis, Dolores Boulay, Jeannette Smith, Louise McCray, Virginia Pillsbury, Jean Gregan, Elaine Goodreau, Maxine Christenson, Helen McLeish, Doreene Foster, Marilyn George.

Front row: Stasa Raizes, Beverly Hibberd, Lorraine Barcomb, Joan Muffley, Judy Lewis, Patricia Downing, Jayne Crockett, Mary County, Joanne Fritz, Frances Keating, Angela Vangeli, Shirley Cary.



In the future, when we leaf through our scrapbooks and recall pleasant memories, life at Deering House will always be prominent in our thoughts. We, the Deering residents, all agree that this, our last year at Westbrook, has been the "greatest."

Patsey Downing, our efficient president, is also well-known at Middlebury. Winter Carnival was a big success for the Deeringites, especially Queen Stasa Raizes and court attendants Judy and Sue. The ice skit prize was also ours. Our nights out were well taken care of by P. J. C. and Bowdoin. We were all initiated into the Garden Club. Our med-sec's were always ready with a needle—run, girls, run.

The smoker was never empty and Jayne's piano playing kept us enthralled for hours. There was always that study, study, study, but many good times to counteract.

Our thanks go to our understanding housemothers, Miss Putnam and Miss Stinson.





Back row, left to right: E. Bennett, L. Hawkes, S. Landry, L. Lamb, P. Tevanian, C. Fletcher, S. Mardigan, N. Berg, P. Esty, E. Smith, N. Waitt, A. Hall, B. Smith.  
 Third row: C. Christenson, P. Clarke, N. Corey, J. Grant, S. Rogers, C. Chase, A. Ricker, J. Kelley, M. Tabachnick, F. Weisberg, A. Swendsen, D. Brow, S. Randolph, M. McLean.  
 Second row: J. Brown, B. Fockler, G. Browne, A. Larochele, C. Caron, J. Lowell, G. Horsman, C. Steeves, A. Marchi, B. Palmer, J. Bliss, G. Mayo, J. Jackson, P. Leigh, K. Olsen.  
 First row: C. Lewis, H. Fink, D. Levesque, I. Scammon, N. Packard, C. Colello, J. Blumenthal, R. Manson, B. Gulian, J. Hollywood, B. Weeks, S. LaRochelle, G. Diallinas.



### DAY HOPS

Friendships, fun, singing, practical jokes, and the inevitable books. . . . Muriel, knitting and more knitting. . . . Little sisters—Barbara, Sylvia, Pat, Joanne, Cleo. . . . Sensational Sextet—Colene, Gerry, Carolyn, Shirley, Charlena, Joyce. . . . Winter Carnival—fingers crossed for snow. . . . Tina—our vivacious president. . . . The gay spirit of Nancy, Kay, Betty, Ann, Barb, and Phyllis. Cards, Cards, and more Cards. . . . Music and fun at the Shamrock Shag. . . . Not too distant wedding bells for Ginny and Rosie.

This and so much more has made '53 the happiest year in our scrapbook of memories.

*Day*







First row, left to right: Jean Knoffa, Jeannine Prince, Bettyann Cobb, Sally Lothrop, Joan Thomas, Judith Weeks, Katherine Vasil, Dorothea Rubin, Allyn Phinney.  
 Second row, left to right: Joan Walsh, Ruth Marcus, Elizabeth Milliken, Judith Flint, Jeanette Hopkins, Lorena Drescher, Carol Crockett, Marion Foster, Judith Robbins.  
 Third row, left to right: Laura Page, Gienia Skomial, Jean McQuoid, Judith Gates, Barbara Haynes, Patricia Libby, Jane Walsh, Doris Berlow.

## *Goddard*



Our first year here at W. J. C. has been a fulfilled and eventful one that we'll never forget. First to be pinned was Ruth, followed by Betty. . . . Bowdoin weekends, Joan's election as our "Prezz," parties in the smoker, the weekend Maine Maritime was in town, unexpected phone calls from Texas, Boston, Springfield, Bangor, Kansas, and Wyoming . . . the "light and bright" fad, Canasta lessons, pillow fights that dissolved in laughter, goldfish and sardines, the daily scramble for mail, our four grand housemothers . . . all are memories we will cherish of the life we lived and loved in Goddard Hall.





Last row, left to right: A. Hodgdon, H. Turner, B. Johnson, J. Marden, G. Leighton, P. Chapman, E. Bond, P. Ward, P. Hibbert, J. Rowland, A. Core, S. Caton, B. Marston, R. Meserve.  
 Third row: B. Redmond, C. Bailey, J. Pickens, J. Mattson, V. Bean, B. Anderson, J. Berqfors, M. Lawrence, E. Elliot, J. Clark, C. Strout, K. Barney, J. Pedro, I. Anagnostis.  
 Second row: H. Rancourt, B. Bessey, J. Giggey, F. Daniels, E. Peterson, G. Schoonjans, P. Porter, G. Grafton, B. Wellman, T. Carriere, M. McIntosh, C. Hyde, R. Douglas, M. Kidder, A. Miller.  
 First row: C. Kendall, E. Anderson, N. Earle, P. Marsaw, H. Quarmby, J. Nott, E. Townsend, A. Jackson, S. Johnson, J. Nickerson, C. Langman, A. Otilige, B. Gardella, M. Chase, S. Dunning, P. Bunker, B. Holmes.



## *Hersey*

"Hersey Hall,  
 Dear Hersey Hall,  
 We'll always love you  
 Best of all!"

The biggest dormitory on campus, Hersey Hall, has certainly come home with flying colors this year.

Our achievements have been numerous: Sheila Johnson was elected President of the Freshman Class. We won sculpture honors at Winter Carnival, and became runner-up in interhouse volleyball.

We've experienced fine leadership with Beverly Pollard, President; Estelle Townsend, Vice-President; Harriet Quarmby, Secretary; and Judy Nott, Treasurer, at the helm.

We have created everything from a flooded smoker to all-day bridge games and are looking forward to more fun as Seniors next year.



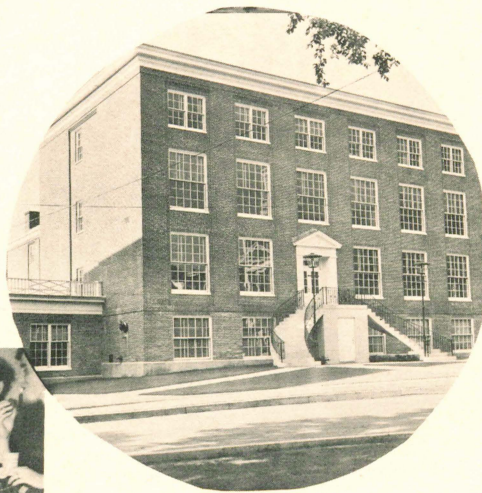




Back row, left to right: Julia Hoos, Marianne Tefft, Elizabeth Ganak, Elsie Bisbee.  
 Second row: Sue Shailer, Cynthia Miller, Pat Crowley, Betty Herr, Sue Flier, Doreen Mitchell.  
 First row: Sandra Prince, Barbara Comstock, Charlotte Crisp, Jill McLaughlin, Anne Moeckel, Rachel Shea.



## Proctor



Pardon Me! Summer is here, let's go. . . . A year of memories. . . . "Good night, Irene!" . . . Friends. . . . Halloween skit we forgot. . . . Winter Carnival, hop little bunnies—hop . . . the giant rabbit. . . . Harmonious voices. . . . All the bridge games.

The slides and meetings with Miss Pike. . . . Bobbie, "weren't you supposed to wait on?" . . . Anne and Sue just couldn't forget zoo. . . . Jersey still writing. . . . Patty always singing. . . . Danny and Marsha watching out for the dear Bowdoin men. . . . Pat and Marianne backing up the army. . . . Crispy and Betty without knitting needles?! . . . Final exams . . . next year.

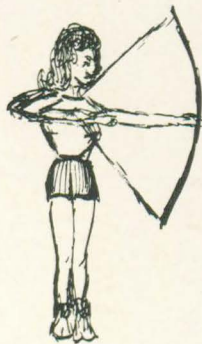
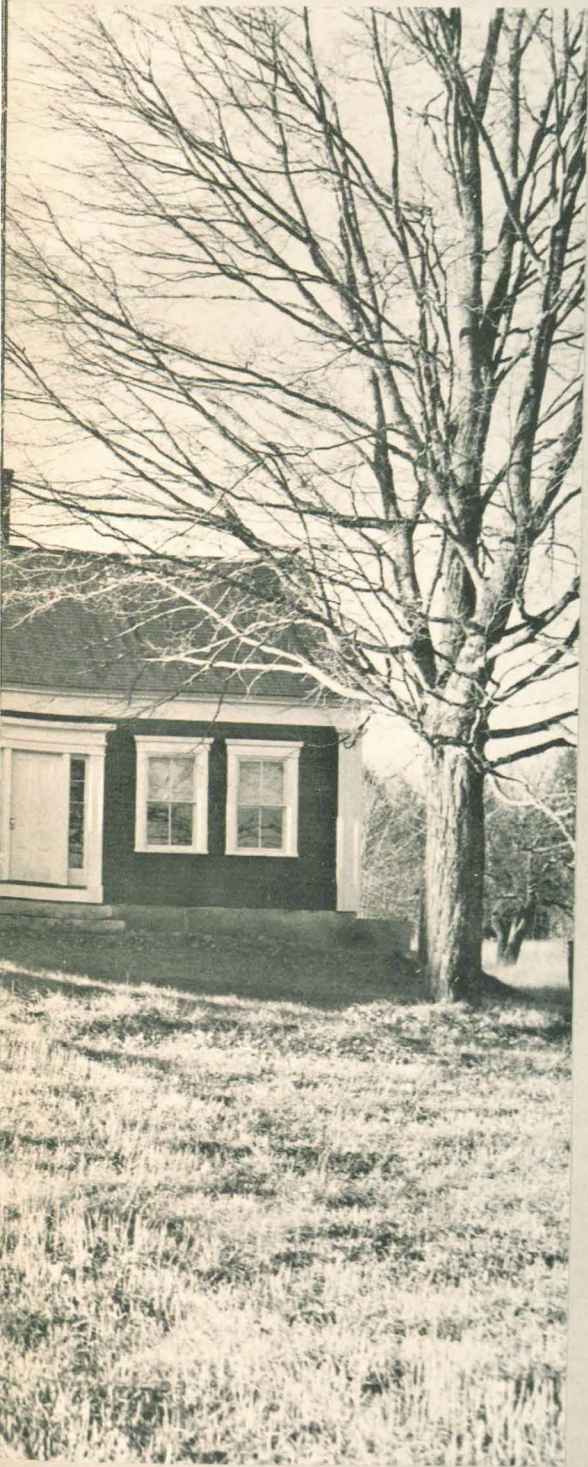












S  
P  
O  
R  
T  
S



Every member of the student body has an opportunity to try her hand at sports. If gym classes just don't seem to be enough of a workout, then come on out for tournaments that have been planned by W. A. A. The entire student body is divided in two teams, Maroon and Gray. Come on out and play for your team, let's win that banner!

W. A. A. board had a lot of fun working with Outing Club Council to plan the Winter Carnival. Next came May weekend that we helped to make a success and also our Spring "play-day."

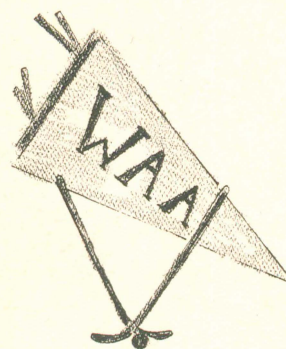
Look on any bulletin board for something to do and W. A. A. will probably have the answer, it may be anything from bowling to "tennis anyone?"

Our advisor, Miss Pratt, certainly helped us through many complications and kept us moving. The members of the board are President, Carol Upton; Vice-President, Carol Fletcher; Secretary, Sue Sarra; Treasurer, Gerry Schoonjans; Senior Maroon leader, Caroline Richards; Freshman Maroon leader, Judy Blumenthal; Senior Gray leader, Judy Lewis; Freshman Gray leader, Ann Jackson.



Left to right: Sue Sarra, Secretary; Carol Fletcher, Vice President; Carol Upton, President.

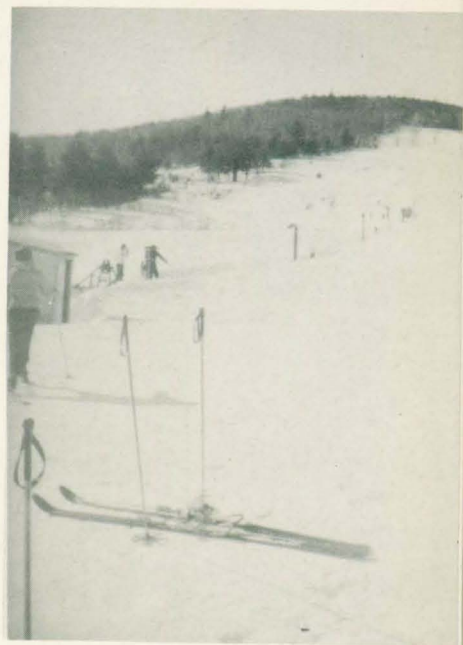
Sitting, left to right: Sue Sarra, Carol Upton, Carol Fletcher, Gerry Schoonjans.  
Back row, left to right: Angelia Vangeli, Barbara Guilian, Caroline Richards, Judy Lewis, Eleanor Eames, Judy Blumenthal, Ann Jackson, Miss Pratt.







In the bus.



The slope at Bridgton.

Real winter.



## *Junior Varsity*

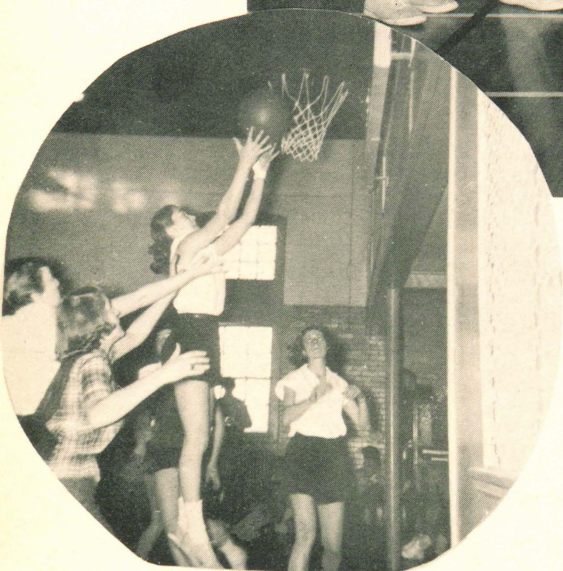
Left to right: Dolores Boulay, Barbara Holmes, Davey Crockett, Jill McLaughlin, Julia Hoos, Sally Caton, Jacqueline Pickens, Ann Jackson, Ruth Meserve, Marilyn George.



*Basketball*  
*Squad*



Front row: Shirley Litchfield, Sylvia Mardigan, Carolyn Richards, Lillian Curtis.  
Back row: Carol Upton, Barbara Gulian, Carol Fletcher, Mel Flaherty, Coach, Miss Pratt; Gerry Schoonjans, Pat Porter, Eleanor Eames, Suzanne Sarra.



Up—and in!

Reach!

Taking it easy.





# Hockey

# Squad



Front row: Angela Vangeli, Judy Lewis, Beverly Hibbert, Betty Wellman, Priscilla Ward, Ruth Meserve, Stasa Raizes, Georgia Stanley.  
Back row: Coach, Miss Pratt, Davey Crockett, Irma Hirsch, Carol Upton, Carol Fletcher, Judy Chapman, Sally Caton, Gerry Schoonjans, Pat Porter, Sue Sarra, Ann Jackson, Manager.



Scramble!

Davey.



Down the field.











J-DEE

O  
R  
G  
A  
N  
I  
Z  
A  
T  
I  
O  
N  
S

TRIP

TRIP To The FAAM  
SIGN HERE:

MARGBOY

IRC

1953

1954

stanios



# Glee Club



First row: Cynthia Miller, Jacqueline Pickens, Shirley Rogers, Carol Crockett, Jean Knoffa, Jean Rochford, Sally Lothrop, Charlena Chase, Jan Nickerson, Marilyn Kidder, Roberta Douglas.  
Second row: Miss Danard, Barbara Besse, Constance Strout, Gloria Grafton, Patricia Porter, Patricia Bunker, Gwen Leighton, Phyllis Chapman, Carolyn Lewis, Judy Rowland, Mr. Bryant.  
Third row: Patricia Marsaw, Nancy Packard, Elaine Anderson, Carol Langman, Claudette Caron, Patricia Clarke, Sylvia Landry, Julia Hoos, Rachel Shea, Judith Blumenthal, Nancy Berg.  
Fourth row: Carolyn Kendall, Leanne Hawkes, Priscilla Ward, Barbara Comstock, Sue Shailer, Colene Kelley, Geraldine Horsman, Dorothy Brow, Judith Flint, Shelia Johnson, Joanne Jackson.

Under the direction of Marshall Bryant, the 1953 Glee Club sang with improved finish and zest.

During this period they performed for the Portland Club, Kiwanis, Rotary, and Lions, all of Portland.

As has been the custom, the Glee Club has sung for the weekly convocation periods and traditional Christmas program. During the May Day Weekend, they presented an enjoyable program from the steps of Proctor Hall.

Early in May, the Glee Club revived the custom of joint concerts with men's colleges by singing in the college chapel with the Men's Glee Club of the University of New Hampshire.

Officers: President, Jean Rochford; Vice-President, Beverly Pollard; Secretary, Sally Lothrop; Librarian-Treasurer, Charlena Chase; and Accompanist, Miss Danard.





# Masque and Candle

The fall of 1952 found the Masque and Candle with a record-breaking membership and a new set of officers: President, Mary County; Vice-President, Phyllis Chapman; Executive Secretary, Joan Wedlock; and Recording Secretary, Barbara Haynes.

The fall activities of the dramatic club were led by the fabulous "Beachcombers' Ball," which was so successful, it is to be established as Masque and Candle's annual dance.

Next on the club's agenda was the Christmas play, "The Long Christmas Dinner," a modern one-act play by Thornton Wilder.

In April the Masque and Candle presented "Shubert Alley" as the annual three-act play.

During Westbrook's May Weekend, the club assisted in the crowning of the May Queen and the direction of the Freshman-Senior Competition Plays.

First row, left to right: Jeannine Prince, Joanne Fritz, Dolores Boulay, Virginia Pillsbury, Phyllis Chapman, Mary County, Barbara Haynes, Joan Wedlock, Shirley Cary, Angela Vangeli, Lois Blustein, Barbara Pedini.  
Second row, left to right: Bettyann Cobb, Ruth Marcus, Kay Vasil, Laura Page, Marion Foster, Joan Thomas, Doris Berlow, Dorothea Rubin, Patricia Kaul, Joan Stanios, Frances Keating, Miss Silverman.  
Third row, left to right: Judith Tuttle, Jane Walsh, Sally Lothrop, Carol Crockett, Judy Weeks, Patricia Libby, Judith Robbins, Connie Bailey, Priscilla Ward, Alice Hodgdon, Ann Jackson, Carolyn Kendall, Frances Weisberg.  
Fourth row, left to right: Helen McLeish, Beverly Hibbert, Ginia Skomial, Maryanne Telft, Jean McQuoid, Judy Flint, Sheila Johnson, Betty Redmond, Judy Rowland, Jayne Crockett, Maxime Christenson.







# S. C. A.

The Student Christian Association experienced a great increase in membership this year. With its large number, they have been able to work more efficiently.

The highlight of the year was Religious Emphasis Week which was held in March. The girls experienced a greater understanding of the various faiths represented on campus by listening to a rabbi, priest and minister speak in Alumnae Lounge on three consecutive nights.

A few Coffee-Pot discussion groups were also held to encourage girls to debate various problems of the day. Each discussion was led by a faculty member.

The annual dance was held on April 17 in the gymnasium.

The S. C. A. feels that its year has been most successful, and is expecting an even greater increase in membership next year.



First row, left to right: Miss Kline, Advisor; Carol Crockett, Joyce Kelley, Geraldine Horsman, Barbara Kellay, Frances Keating, Ruth Marcus, Ann Ricker, Kay Vasil.  
Second row, left to right: Charlotte Crisp, Beverly Hibbert, Shirley Rogers, Charlena Chase, Judith Flint, Joan Thomas, Laura Page, Lynn Phinney, Jeannine Prince.  
Third row, left to right: Betty Herr, Pat Crowley, Imogene Scammon, Nancy Packard, Patricia Clarke, Suzanne LaRochelle, Virginia Bean, Sue Shailer, Elsie Bisbee.  
President, Frances Keating; Vice-President, Ruth Marcus; Secretary, Estelle Townsend; Treasurer, Ann Ricker.



# International Relations Club



First row, left to right: Georgia Stanley, Laura Page, Joan Muffley, Imogene Scammon, Judith Lewis.  
Second row, left to right: Dolores Boulay, Maxine Christenson, Jayne Crockett.

In October, the International Relations Club attended a conference at Harvard University. November marked another big event for I. R. C. when Richard Chartier, secretary of the American Friend's Association, spoke at a coffee pot discussion, on Pacifism.

In March, a Bates debating team came to Westbrook to dispute the problems of N. A. T. O. nations, for the benefit of the World Student Service Fund. A Dutch exchange student from Bowdoin spoke in chapel on differences between American and Dutch education.

Although the I. R. C. has had a small membership during 1952-1953, its spirit was high, and promises to remain so during the coming years.





First row, left to right: Mr. Gordon, Elaine Anderson, Angela Vangelis, Beverly Hibbert, Virginia Pillsbury, Doris Levesque, Joan Lombard, Dorothea Rubin, Louise McCray, Lois Bluestein, Marilyn George, Lorraine Barcomb, Patricia Downing, Mr. Hooghkirk.

Second row, left to right: Jeannine Prince, Patricia Clarke, Nancy Packard, Frances Keating, Georgia Diallinas, Jean Rochford, Judy Stoddard, Barbara Palmer, Rosalie Manson, Ann Marchi, Marie Pangia, Stasa Raizes.

Third row, left to right: Sheila Johnson, Carol Crockett, Jean Knoffa, Betty Ann Caule, Carol Langman, Pat Marsaw, Betty Wellman, Jill McLaughlin, Ellie Bond, Joan Wedlock, Roberta Muskat, Barbara Laird, Dorrine Foster.

Fourth row, left to right: Sylvia Landry, Gloria Browne, Nancy Corey, Caroline Lewis, Mariann Tefft, Dorothy Simpson, Pat Hibbert, Judy Marden, Phyllis Chapman, Frances Weisberg, Elizabeth Smith, Nancy Elder.

## Science Club

The purpose of the Science Club, under the supervision of Miss Brown, Mr. Gordon, and Mr. Hooghkirk, is to provide the setting and organization which will help to further the student's interest in Science.

The members had a carefully developed program in presenting speakers and films on various medical subjects to the entire Westbrook family.

All year long the Science Club members looked forward to their trip to Boston where they visited the Harvard Medical Museum and attended a theater performance. The main event of the year, The Science Club Exhibit, took place during May Festival Weekend.

The officers were: President, Joan Lamond; Vice-President, Mary Alice Soule; Secretary, Doris Levesque; and Treasurer, Dorothea Rubin.



# Retailing Club



Seated, left to right: Eleanor Elliot, Marion Foster, Britt Carlson, Elizabeth Milliken, Norma Strong, Claudette Caron, Lorena Drescker, Marcia Clarke, Gloria Grafton, Elizabeth Ganak, Rachel Shea, Irma Hirsch.

Standing: Cynthia Miller, Jacqueline Pickens, Patricia Feid, Carolyn Kendall, Diane Russell, Carolyn Hyde, Mary McIntosh, Joan Giggey, Laura Page, Bella Gardella, Frances Daniels, Theresa Carriere, Maxine Christenson.

An overnight trip to Boston in February was the highlight of this year's social activities for the Retailing Club—and an outstanding event as it was the first time that the club had ever ventured such a project. Residing at the Sheraton Plaza and witnessing the "Fashion Herald of 1953 Style Show" both proved entertaining and worthwhile to those who attended.

Early in the fall the following officers were chosen to lead the club in its varied activities under the supervision of Miss Constance Curry: President, Britt Carlson; Vice-President, Marion Foster; Secretary, Norma Strong; Treasurer, Elizabeth Milliken; and Social Chairman, Patricia Feid.

All students in The Retailing Curriculum experience a supervised four-week working period, during which the girls benefit by learning the many aspects of buying, selling, and window displaying.







First row, left to right: Barbara Comstock, Judith Lewis, Joan Muffley, Editor; Charlena Chase, Dorothy Brown, Sally Lothrop, Doreen Mitchell.

Second row, left to right: Barbara Haynes, Priscilla Ward, Joanne Jackson, Patricia Libby, Mr. Gridley, Joan Walsh.

Not pictured: Nancy Waitt.

The members of the "Margray" staff have made some distinctive changes in this year's issues of the W. J. C. newspaper. The major change is self-evident: Joan Stanios renamed the W. J. C. "News," the "Margray."

Publishing bi-monthly, the staff has experimented with injecting humor into stories, dispensing with column rules, and conducting personality polls.

The journalism students have gained invaluable experience by being allowed to create their own stories and experiment with make-up. They wish to thank their advisor, Mr. Gridley, for making this possible.

## *The Margray*





## Outing Club Council



Seated, left to right: Georgia Stanley, Jan Cutting, Barbara Gulian, Judy Stoddard.  
Standing, left to right: Joan Lamond, Eleanor Eames, Joan Wedlock, Maxine Christenson, Barbara Laird, Nancy Elder, Audrey Elliot, Marie Pangia.

This year the Outing Club was most successful under the leadership of its President, Barbara Gulian; with assistance from Vice-President, Jan Cutting; Secretary, Georgia Stanley; Treasurer, Judy Stoddard; and other council members.

How well we remember those weekends at the farm . . . the bumpy bus rides . . . our many ski trips to Jackson (or Conway) . . . Tuckerman's Ravine . . . Mt. Katahdin (oh, so tired!) . . . and last of all, our field day.

Oh, we must not forget the Outing Club conference that two of our members were lucky enough to attend in the fall; our dance; the Hiker's Hop; and Rem Drury, who told us of his many experiences in the Alps.

But, alas, it is time to pack up our memories and leave space for next year's members.





# STUDENT COUNCIL



Left to right: Norma Strong, Shirley Cary, Barbara Comstock, Secretary; Joan Stanios, President; Patricia Leigh, Sally Lothrop, Nancy Berg.

During the early part of 1953, the Westbrook Student Government was reorganized to include a wider scope of activity and to promote a more general interest among the student body. The purpose of the Council is to develop character and individual responsibility; to promote greater understanding between faculty and students; to strengthen loyalty to the school; and to establish traditions necessary for the betterment of student life, interests, and activities.

Membership on the council is composed of one representative from each dormitory and one Day Hop from each class. Reports of Council functions and activities are carried to the dormitories through the representatives; and it is their responsibility to present students' wishes and questions back to the Council.

The 1953 Council played a major role in the planning of important weekends, giving the students an opportunity to learn how other councils operate, and in making Westbrook Junior College a more unified and progressive school.





## Riding Club

The horse lovers of W. J. C. have had a most enjoyable year in their activities at Tomlinson's Riding Stables. During supper and breakfast rides, the warm, cozy atmosphere of the Club House was the center of attraction. It offered an opportunity to plan coming events and enjoy the delicious meals prepared by Jerry the cook.

Officers this year were: Janice Cutting, President; Sally Lothrop, Vice-President; Patricia Porter, Secretary; Dorothy Buduo, Treasurer; and Nancy Elder, Social Chairman. They wish to extend thanks to Clara Manning, whose aid and direction made the year successful, and to Mrs. Cushman and Miss Silverman, advisors, who supplied untiring effort and guidance.

Winter Carnival and May Festival provided an opportunity for the whole school to witness the horsemanship and outstanding performances of club members in beginning, intermediate and advanced stages.



Seated, left to right: Eleanor Elliot, Audrey Elliot, Jan Cutting, Sally Lothrop, Patricia Porter, Jeannine Prince.  
Standing, left to right: Dorothea Rubin, Nancy Elder, Mary Lawrence, Jean McQuoid, Ann Perkins, Jean Knoffa, Bettyann Cobb, Doris Bigelow, Doris Berlow, Mrs. Cushman.

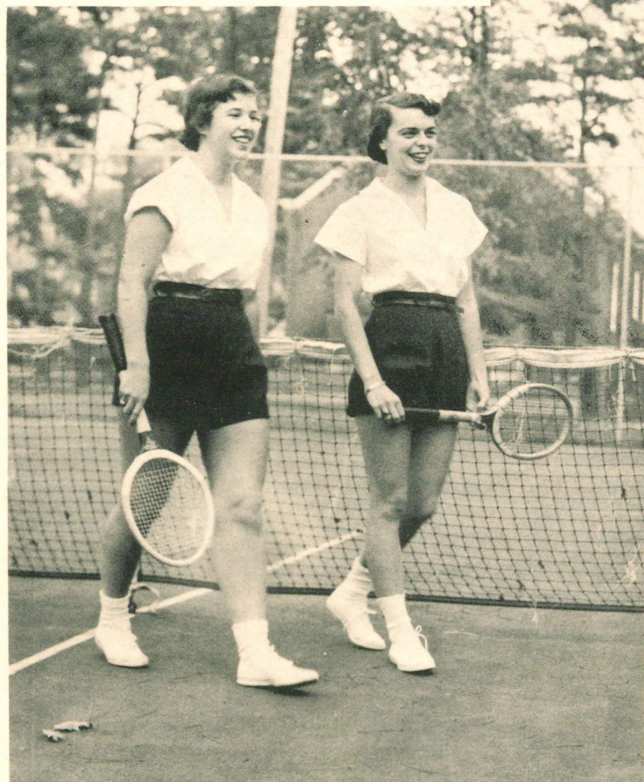




Studying hours.



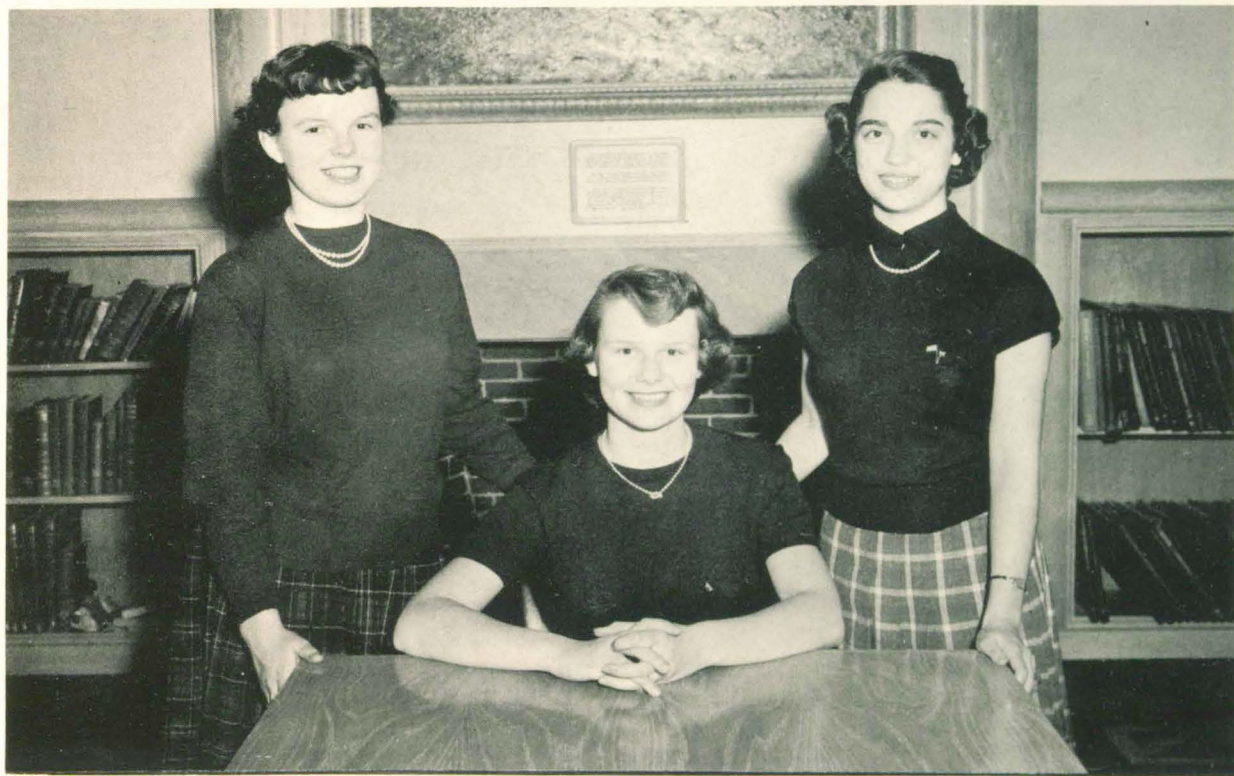
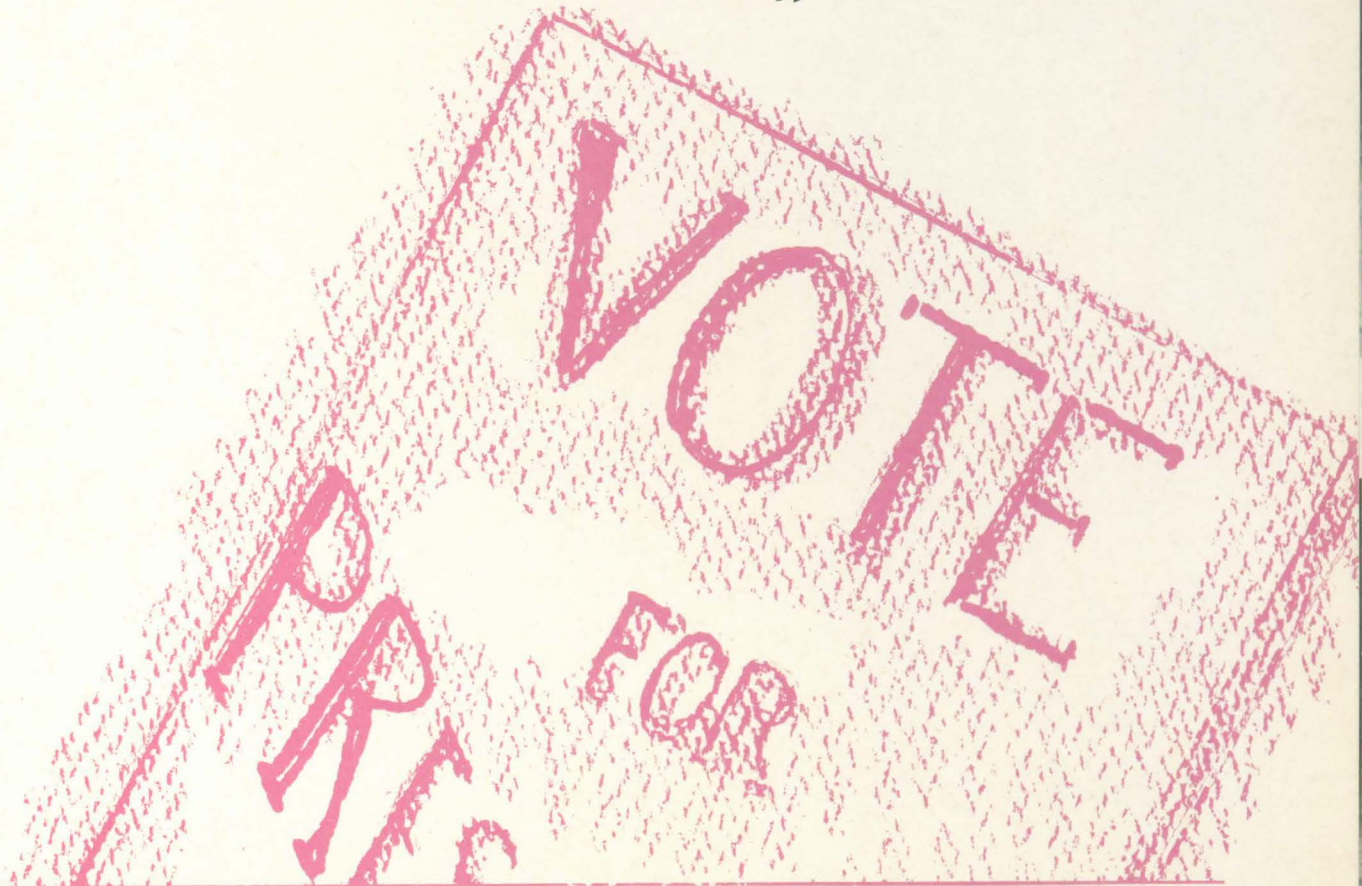
Oh happy days.



Tennis, anyone?



# *Freshman Class Officers*



Left to right: Jane Walsh, Treasurer; Sheila Johnson, President; Ruth Marcus, Vice-President.  
Absent: Patricia Nevers, Secretary.







# A C T I V I T I E S







QUEEN STASA





Columbus wins!



The Victory Parade.

*e Carnival*

The Court.







End of the trail.



Bucket brigade.



Tug-tug!



An afternoon ride.



A shovel full!



A happy quartet.





Jump, bunny, jump!



All the little bunnies



Will you?



A Bell Princess.



The Receiving Line.



# Faculty Wishes





Life at Eastbrook Feminary,  
 or,  
 Ya Gotta See It To Believe It

PROGRAM

Overture:

The Eastbrook Feminary Pillhammonica Orchestra

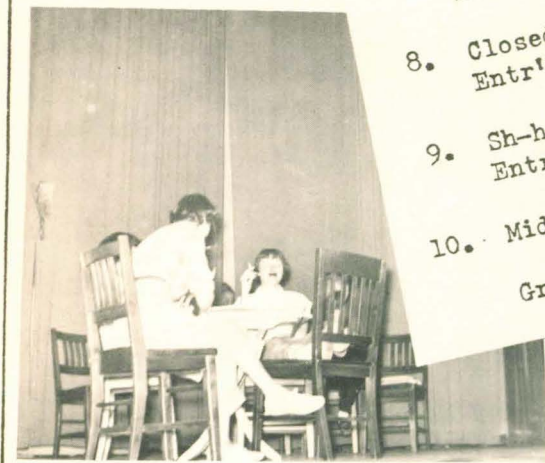
1. A Presidential Breakfast  
 Entr'acte: A Man and His Best Friend
2. Budge-it....Your Time  
 Entr'acte: Man-in-the-Hall
3. Gym-dandy  
 Entr'acte: Wholesale?
4. Bussing Along  
 Entr'acte: Stretching It a Bit
5. Where There's Smoke...  
 Entr'acte: Just Testing
6. Uncle Ventus and Aunty Coagulant  
 Entr'acte: Going Home
7. Hash Today  
 Entr'acte: Too in Tune
8. Closed Harmony  
 Entr'acte: A Warning
9. Sh-h-h-h-h  
 Entr'acte: After Two Years
10. Midnight in the Infirm-ary  
 Grand Finale: Facult-aria

March 23, 1953

8 p.m.

THE FACULTY FOLLIES

Moulton Chapel



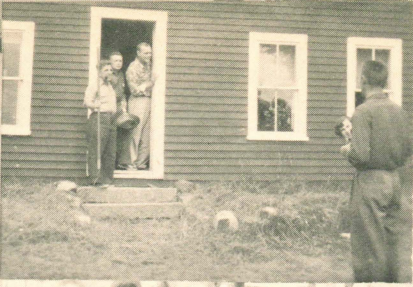














*Administration*



MISS BETTY ALLAN  
Alumnae Secretary



MISS BRUCINÉ BEITH  
Secretary to the Committee  
on Admissions



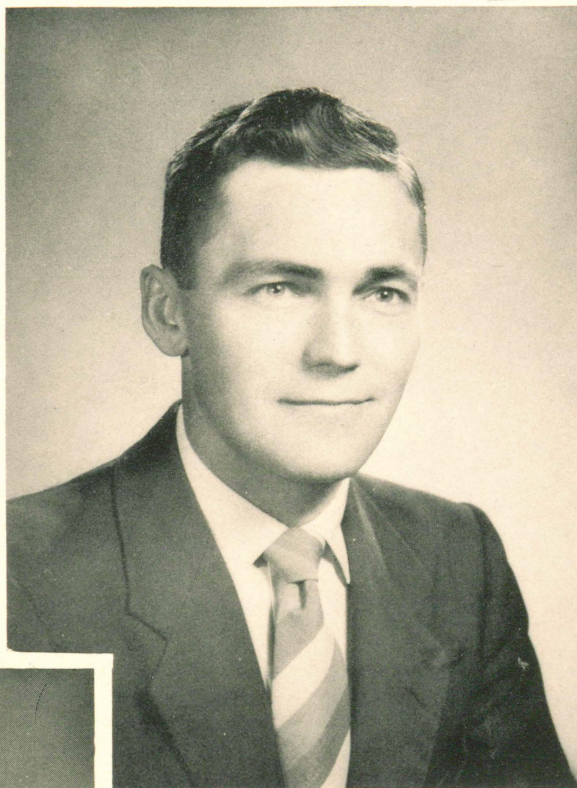
MISS KATHRYN BUTTERFIELD  
Bursar



*Administration*



SARA JANE CADY  
Assistant to the President



DANA E. DREW  
Business Manager



MRS. PRISCILLA KNIGHT  
Secretary to the Dean





MRS. MILTON D. PROCTOR  
Manager of the Bookstore

*Administration*



MRS. MARJORIE TWOMBLY  
Secretary to the President



## Seniors

- Barcomb, Lorraine E., Broad St., Rochester, N. H.  
Beard, Lois, Kemp St., Grafton, Mass.  
Bigelow, Doris G., Harvard, Mass.  
Bluestein, Lois A., 39 Bates Rd., Swampscott, Mass.  
Bouley, Dolores B., 116 Walnut St., Lewiston, Me.  
Buduo, Dorothy A., 30 Northboro St., Worcester, Mass.  
Carlson, Britt L., 31 Monroe St., Hartford, Conn.  
Cary, Shirley A., Greenfield, N. H.  
Chapman, Judith, 2 Prince St., Marblehead, Mass.  
Chase, Charlena, 1396 Forest Ave., Portland, Me.  
Christenson, Maxine A., 115 Hillside Ave., W. Caldwell, N. J.  
Colello, Christina D., 3 Westminster Ave., Portland, Me.  
County, Mary P., 26 Tampa St., Lewiston, Me.  
Crockett, Jayne W., 104 Oregon St., Springfield, Mass.  
Curtis, Lillian M., 14 Patterson Rd., Belfast, Me.  
Cutting, Janice T., 11 Mechanic St., Presque Isle, Me.  
Diallina, Georgia G., 52 Coyle St., Portland, Me.  
Downing, Patricia M., 203 River Rd., Winthrop, Mass.  
Eames, Eleanor B., 756 Hammond St., Bangor, Me.  
Elder, Nancy J., 81 Tanner St., Manchester, Conn.  
Elliott, Audrey A., 5 Chester Rd., E. Winchester, Mass.  
Esty, Phyllis M., 108 Rochester St., Westbrook, Me.  
Feid, Patricia O., 20 Ralph St., North Attleboro, Mass.  
Fink, Helene M., 34 Pitt St., Portland, Me.  
Flaherty, Mary Ellen, 14 Murchison Pl., White Plains, N. Y.  
Foster, Dorrine S., 106 Bruce St., Manchester, N. H.  
Fritz, Joanne R., 118 Pine Ridge Rd., Reading, Mass.  
George, Marilyn M., 8 Bonair Rd., Worcester, Mass.  
Goodreau, Elaine M., Central Rd., Rye Beach, N. H.  
Gregan, Jean, Greenville, Me.  
Grover, Mary Lucia, 2 Fitch St., Westbrook, Me.  
Gulian, Barbara, 157 Beacon St., Portland, Me.  
Hibbert, Beverly F., 107 Poatt Ave., Somerset, Mass.  
Hirsch, Irma F., 75 Cleaveland Rd., Chestnut Hill, Mass.  
Horsman, Geraldine A., 135 Bancroft St., Portland, Me.  
Keating, Frances M., 494 Washington St., Wellesley, Mass.  
Kelley, Colene L., 28 Wolcott St., Portland, Me.  
Kelley, Joyce M., 13 School St., Westbrook, Me.  
Kreis, Luisa, Dennison Rd., Essex, Conn.  
Laird, Barbara J., 2 Lincolnshire St., Winchester, Mass.  
Lamond, Joan M., 239 Warren St., Fall River, Mass.  
Leigh, Patricia A., 50 Highland St., Portland, Me.  
Levesque, Doris M., 160 River St., Sanford, Me.



- Lewis, Judith A., Bertram St., Beverly, Mass.  
 Litchfield, Shirley A., 10 Pleasant St., Ellsworth, Me.  
 Manson, Rosalie L., 9 Gurnet Rd., Brunswick, Me.  
 Marchi, Anne E., 23 Deerfield Rd., Portland, Me.  
 McCrey, Louise M., 123 Knox St., Rumford, Me.  
 McLeish, Helen R., 59 Roseneath Ave., Newport, R. I.  
 Muffley, Joan F., 36 Miller St., Belfast, Me.  
 Musket, Roberta, 16 Rutherford Ave., Haverhill, Mass.  
 Nickerson, Eleanor, 37 Kenwood St., Portland, Me.  
 Olsen, Kathleen B., Ocean House Road, Cape Elizabeth, Me.  
 Palmer, Barbara C., 115 Gleckler Rd., Portland, Me.  
 Pangia, Marie A., 94 VanBuskirk Ave., Stamford, Conn.  
 Perdini, Barbara A., 115 Pratt St., Mansfield, Mass.  
 Pillsbury, Virginia R., 7 St. Charles St., Derry, N. H.  
 Raizes, Anastasia, 11 Leonard St., Rochester, N. H.  
 Rakofsky, Marlene D., 451 Brighton Ave., Portland, Me.  
 Richards, Carolyn C., Mechanic St., Rockport, Me.  
 Rochford, Jean D., 42 Thompson St., Springfield, Mass.  
 Rogers, Shirley I., 60 Main St., Yarmouth, Me.  
 Sarra, Suzanne S., 161 Essex St., Swampscott, Mass.  
 Scammon, Imogene M., 14 Winter St., Portland, Me.  
 Smith, Betty Jean, 12 Thornton Ave., Saco, Me.  
 Smith, Elizabeth A., 22 Richards St., South Portland, Me.  
 Smith, Jeannette M., Chester, N. H.  
 Smith, Virginia S., New Gorham Rd., Westbrook, Me.  
 Stanios, Joan A., 28 Hope St., Brockton, Mass.  
 Stanley, Georgia, Porter Rd., Andover, Mass.  
 Steeves, Carolyn, R. F. D. No. 1, Cumberland Center, Me.  
 Stoddard, Julie L., 1415 Country Club Rd., St. Petersburg, Fla.  
 Strong, Norma L., 118 Pitkin St., Manchester, Conn.  
 Tabachnick, Muriel F., 65 Longfellow St., Portland, Me.  
 Upton, Carol, 16 Maple St., Marblehead, Mass.  
 Vangelli, Angela A., 405 College St., Lewiston, Me.  
 Waitt, Nancy E., 555 Main St., Westbrook, Me.  
 Wedlock, Joan M., 1263 So. Pine Creek Rd., Fairfield, Conn.  
 Weisberg, Frances G., 90 Rockland Ave., Portland, Me.  
 Whalen, Joan F., 14 Prince St., Concord, N. H.

#### SPECIAL STUDENTS

- Bisbee, Elsie, Gray, Me.  
 Hibbard, Jaycelyn B., 104 Huntress Ave., South Portland, Me.  
 Nawfel, Helen L., 229 Main St., Waterville, Me.  
 Shurman, Geraldine E., Falmouth, Me.



## *Freshmen*

- Anagnostis, Irene, 49 Storer St., Saco, Me.  
Anderson, Barbara, 11 Victoria Circle, Norwood, Mass.  
Anderson, Elaine H., Bradley St., Fryeburg, Me.  
Bailey, Constance L., 25 Union St., Concord, N. H.  
Barnes, Ruth M., 26 Knight St., Westboro, Me.  
Bean, Virginia A., Otisfield, Me.  
Bennett, Elaine F., Cumberland Center, Me.  
Berg, Nancy A., 26 Cliff Ave., Cape Elizabeth, Me.  
Bergfors, Jean C., 27 Bishop Rd., Malden, Mass.  
Berlow, Doris R., 21 Laudholm Rd., Newton, Mass.  
Bliss, Joan, 244 Cottage Rd., South Portland, Me.  
Bund, Eleanor A., 58 Edgewood Rd., Needham, Mass.  
Blumenthal, Judith E., 186 Bradley St., Portland, Me.  
Bonney, Kathleen L., Turner, Me.  
Boyne, Geneva A., 116 Walton St., Portland, Me.  
Brow, Dorothy, 40 Hollis Rd., Portland, Me.  
Brown, Barbara J., 55 Boston St., South Portland, Me.  
Browne, Gloria R., 10 Braeburn St., Portland, Me.  
Bunker, Patricia A., State St., Augusta, Me.  
Carriere, Theresa, 4 Taylor St., N. Attleboro, Mass.  
Caton, Sally A., 925 Middle St., Bath, Me.  
Chapman, Phyllis M., Echo Lodge, Raymond, Me.  
Chase, Marilyn R., 205 Winter St., Auburn, Me.  
Christensen, Cleo, 7 School St., Westbrook, Me.  
Clark, JoAnn, Amherst, N. H.  
Clarke, Marcia P., 19 Carve Rd., Stoneham, Mass.  
Clark, Nancy R., 17 Glendale Rd., Quincy, Mass.  
Clarke, Patricia J., 179 Marrett St., Westbrook, Me.  
Cobb, Betty Ann, 84 Triton Ave., Winthrop, Mass.  
Comstock, Barbara S., 52 Ellsworth St., E. Hartford, Conn.  
Core, Adele, 129 Alexander Ave., Hartsdale, N. Y.  
Corey, Nancy A., Cumberland Center, Me.  
Crisp, Charlotte T., 29 Berkeley, Nashua, N. H.  
Crockett, Carol H., 10 Central St., Winchester, Mass.  
Crosby, Frances C., 8 Clinton St., Portland, Me.  
Crowley, Patricia M., 105 Chaplin St., Pawtucket, R. I.  
Daniels, Frances I., Pleasant St., New London, Conn.  
Deering, Priscilla J., 40 Ocean Ave., Portland, Me.  
Drescher, Lorena B., 10 Bradford Ave., Bradford, Mass.  
Douglas, Roberta, 202 Queen St., Bristol, Conn.  
Dunning, Jane A., 55 Fountain St., Bangor, Me.  
Elliot, Eleanor G., 51 Norman Pl., Tenafly, N. J.  
Etelman, Carolyn M., 161 Tryon Ave., Englewood, N. J.  
Fletcher, Carol L., 62 Irving St., Portland, Me.  
Flier, Suzanne, 5 Lewis Ave., Hartsdale, N. Y.  
Flint, Judith, 42 Roton Ave., Rowayton, Conn.  
Fockler, Barbara H., Cumberland Foreside, Me.  
Foster, Marion L., 188 Davis Ave., White Plains, N. Y.  
Ganak, Elizabeth I., 78 Elizabeth Rd., Belmont, Mass.  
Gardella, Bella M., 48 Forest St., Haverhill, Mass.



- Gates, Judith A., 7 Longfellow Rd., Melrose, Mass.
- Gigoey, Joan N., Presque Isle, Fort Fairfield, Me.
- Grafton, M. Gloria, 59 Exeter St., Portland, Me.
- Grant, Janice E., 56 Pleasant St., Yarmouth, Me.
- Hall, Abigail, 62 Edwards St., Portland, Me.
- Hawkes, Leanne, 65 Clifton St., Portland, Me.
- Haynes, Barbara A., Cobb Rd., Camden, Me.
- Herr, Elizabeth M., 15 Cedar St., Berlin, N. H.
- Hibbert, Pauline E., 145 Mill St., Swansea, Mass.
- Hodgdon, Alice, 727 West Ave., Burlington, Vt.
- Hollywood, Joyce E., 52 Pennsylvania Ave., South Portland, Me.
- Holmes, Barbara D., 10 Main St., Harrison, Me.
- Hoos, Julia R., 15 Eighth St., Berlin, N. H.
- Hopkins, Jeanette M., North Haven, Me.
- Horgan, Marion L., 54 Kimball St., Malden, Mass.
- Hyde, Carolyn D., 595 Turner St., Auburn, Me.
- Jackson, Ann H., 8 Golden Cove Rd., Chelmsford, Mass.
- Jackson, Joanne, 75 Taft Ave., Portland, Me.
- Johnson, Barbara O., 22 Hammond St., Lewiston, Me.
- Johnson, Sheila L., 271 Harrison St., Manchester, N. H.
- Kaul, Patricia, 219 Penobscot St., Rumford, Me.
- Kelley, Barbara A., 28 Wolcott St., Portland, Me.
- Kendall, Carolyn, 45 Hamilton Rd., Glen Ridge, N. J.
- Kidder, Marilyn, 55 Oak St., Manchester, N. H.
- Knoffa, Jean M., 320 Tolland Turnpike, Manchester, Conn.
- Lamb, Louise E., Rangeley, Me.
- Landry, Sylvia E., 80 Mechanic St., Westbrook, Me.
- Langman, Carol J., 59 Adams St., Lakewood, R. I.
- Larochelle, Ann, 19 Fessenden St., Portland, Me.
- LaRochelle, Suzanne H., Norridgewock, Me.
- Laurence, Mary K., 26 Boyle Ave., Bucksport, Me.
- Leighton, Gwendolyn A., Milbridge, Me.
- Lemieux, Louise M., 196 Bridge St., Westbrook, Me.
- Levine, Joan P., 999 Forest Ave., Portland, Me.
- Lewis, Carolyn N., 365A Allen Ave., Portland, Me.
- Libby, Patricia A., 200 High St., Hanson, Mass.
- Lothrop, Sally G., 15 Longfellow Rd., Reading, Mass.
- Lowell, P. Joann, 25 Glenwood Ave., Westbrook, Me.
- Lubee, Joanne E., 75 Kelsey St., South Portland, Me.
- Marens, Ruth M., 244 Summit Ave., Brookline, Mass.
- Marden, Judith A., Holderness, N. H.
- Mardigan, Sylvia M., 22 Belknap St., Portland, Me.
- Marston, Betsy J., Main St., Eliot, Me.
- Marsaw, Patricia A., 6 Rexhame St., Worcester, Mass.
- Mattson, Vansz E., 6 Gay St., Norwood, Mass.
- Mayo, Geraldine F., 394 Danforth St., Portland, Me.
- Meserve, Ruth-Kay, 46 Davis Ave., Auburn, Me.
- Miller, Adelaide M., 10 Bacon Court, Bronxville, N. Y.
- Miller, Cynthia A., 169 Beech Ave., Melrose, Mass.
- Milliken, Elizabeth J., 96 Elm St., Saco, Me.
- Mitchell, Doreen L., 54 Myrtle St., Winthrop, Me.
- Moeukel, Anne M., 1 Russel Hill Rd., Ashburnham, Mass.
- Moore, Sharon V., 81 Highland Rd., South Portland, Me.



- McIntosh, Mary G., 28 Harvard Rd., Manchester, Conn.
- McLaughlin, Jill, 15 Stevens St., Melrose, Mass.
- McLean, Margaret A., 24 Morgan Ct., Portland, Me.
- McQuard, Jean M., 91 Grove St., Bangor, Me.
- Nevers, Patricia A., 11 Elm St., Norway, Me.
- Nickerson, Jeannette E., 26 Natalie Ave., Melrose, Mass.
- Nott, Judith A., River Ave., South Gardiner, Me.
- Ottilige, Audrey C., Chase's Lane, Middletown, R. I.
- Packard, Nancy V., 209 Concord St., Portland, Me.
- Page, Laura E., 110 Tanner St., Manchester, Conn.
- Pedro, Janice M., 10 Beacon St., Taunton, Mass.
- Perkins, B'deau A., 127 Waverly Ave., Newton, Mass.
- Peterson, Elizabeth A., 65 Ledge Ave., Bar Harbor, Me.
- Phinney, Alynn, Barlow's Hd. Rd., Pocasset, Mass.
- Pickens, Jacqueline B., Elm St., Swansea, Mass.
- Piper, Nancy L., 69 Glenwood Ave., Franklin, N. H.
- Pollard, Beverly A., 494 Hall St., Manchester, N. H.
- Prince, Jeannine R., 2840 Elm St., Manchester, N. H.
- Porter, Patricia L., Kirby Lane, Rye, N. Y.
- Prince, N. Sandra, 70 Nahant Ave., Revere, Mass.
- Quambly, Harriet, Readfield, Me.
- Rancourt, Helen B., 71 Stover St., Saco, Me.
- Randolph, Sonya A., West Buxton, Me.
- Redmond, Elizabeth A., 155 Loomes St., Burlington, Vt.
- Ricker, Ann, R. F. D. No. 3, Gorham, Me.
- Robbins, Judith, 49 Hale St., W. Springfield, Mass.
- Roland, Judy, 100 Spring Rd., Nahant, Mass.
- Rubin, Dorothea J., 1 Grant Ave., Watertown, Mass.
- Russell, Diane J., 12 Werenoro Ave., Westfield, Mass.
- Santoro, Anna M., 139 Longfellow St., Portland, Me.
- Schoonjans, Geraldine J., 3 Westland Ave., Old Orchard, Me.
- Shaikr, Sue, 6 Rose St., White Plains, N. Y.
- Shea, Rachel L., 41 Abelart Ave., Webster, Mass.
- Simpson, Dorothy E., 535 Stevens Ave., Portland, Me.
- Stomial, Genevieve, 108 Newton St., So. Hadley Falls, Mass.
- Soule, Mary Alice, West Scarborough, Me.
- Strout, Constance R., Main St., Milbridge, Me.
- Swendsen, Avis, 27 Middle St., Westbrook, Me.
- Tefft, Marianne, 65 Myrtle St., Portsmouth, N. H.
- Tevanian, Patricia A., 154 Lancaster St., Portland, Me.
- Tevanian, Shirley E., 44 Cedar St., Portland, Me.
- Thomas, Joan M., 8 Stoddard St., Hingham, Mass.
- Townsend, Estelle M., Boothbay Harbor, Me.
- Turner, Hope E., Mapleton, Me.
- Tuttle, Judith A., 20 Colonial Rd., Portland, Me.
- Vasil, Katherine, 537 Manchester St., Manchester, N. H.
- Walsh, Jane E., 152 No. Main St., St. Albans, Vt.
- Walsh, Joan C., 152 No. Main St., St. Albans, Vt.
- Ward, Priscilla, 283 Orange St., Manchester, N. H.
- Weeks, Judith A., 61 Ohio St., Bangor, Me.
- Wellman, Betty J., 21 Laurel Drive, Needham, Mass.
- Wilkes, Barbara I., 1 McLean St., South Portland, Me.



