


1958

Tower 1958

UNE Library Services Westbrook College History Collection
University of New England, Maine, rgray@une.edu

Follow this and additional works at: http://dune.une.edu/wchc_yearbooks

 Part of the [Cultural History Commons](#), [Social History Commons](#), [Women's History Commons](#), and the [Women's Studies Commons](#)

Preferred Citation

Westbrook College History Collection, UNE Library Services, "Tower 1958" (1958). *Yearbooks*. 2.
http://dune.une.edu/wchc_yearbooks/2

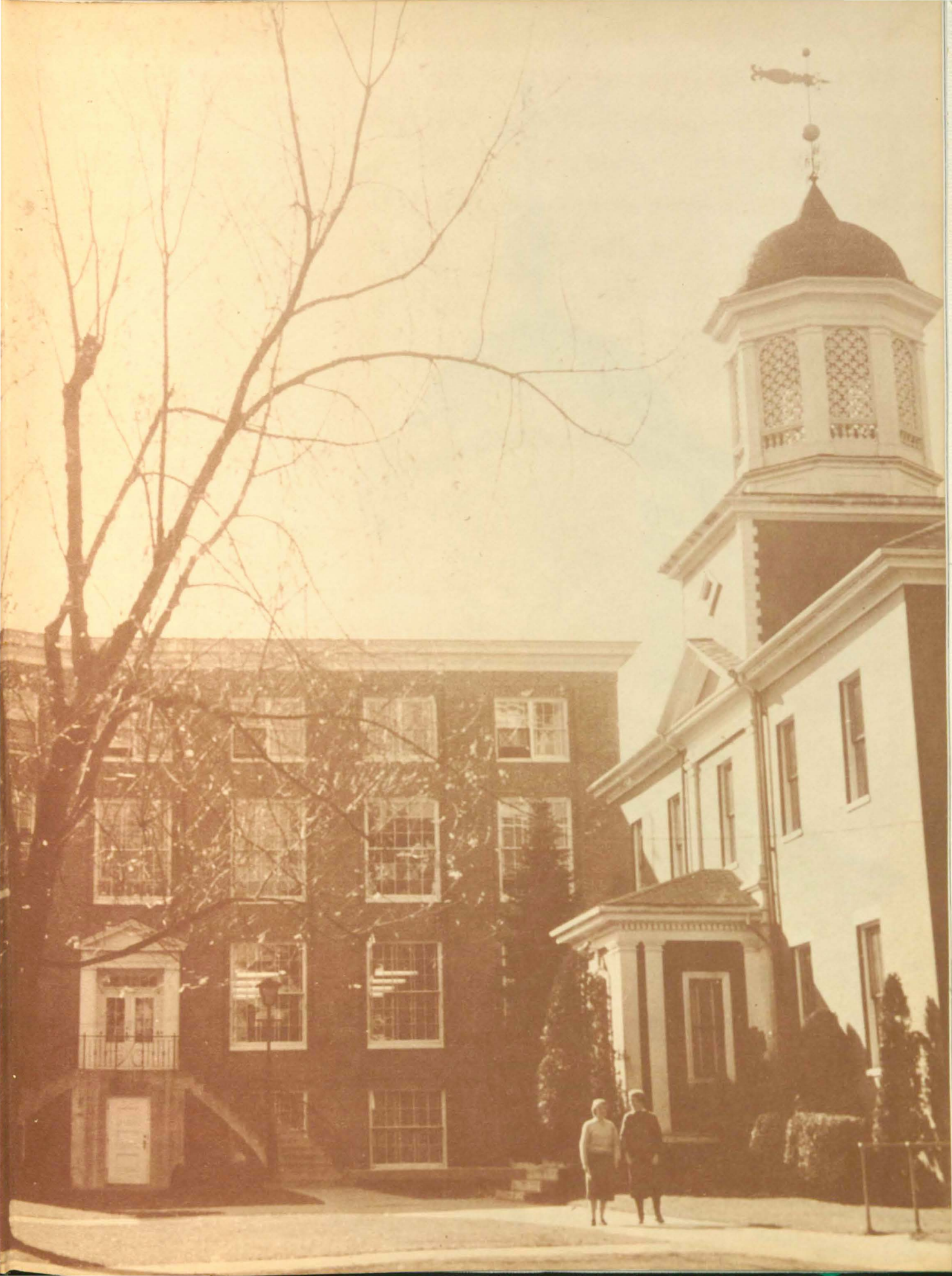
This Book is brought to you for free and open access by the Westbrook College History Collection at DUNE: DigitalUNE. It has been accepted for inclusion in Yearbooks by an authorized administrator of DUNE: DigitalUNE. For more information, please contact bkenyon@une.edu.

1958



THE TOWER









DEDICATION

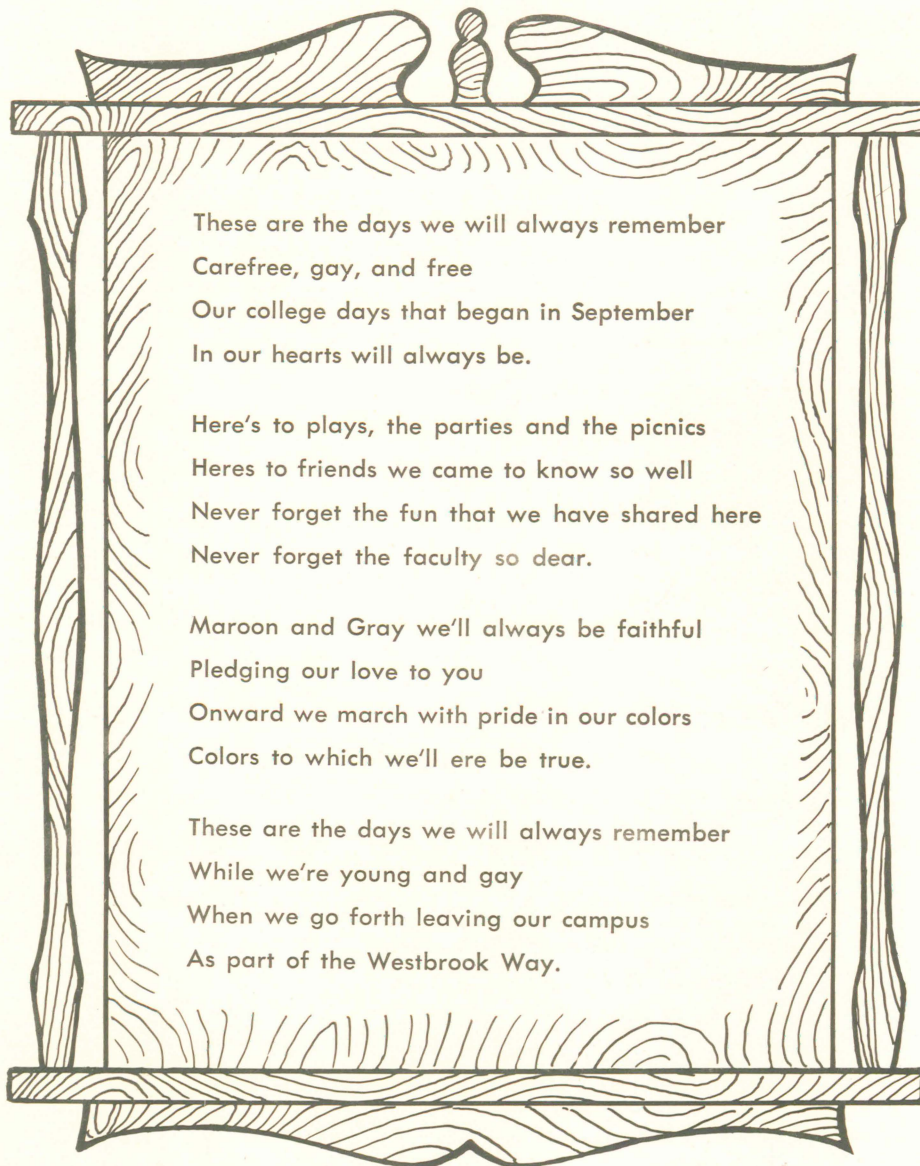
DR. MILTON D. PROCTOR

Westbrook Junior College owes its life to Dr. Milton D. Proctor. His endeavor, vigor and wisdom built Westbrook into a top-ranking school. When he came to Westbrook Seminary in 1932, he was confronted with three major problems. There was need for a sound financial structure, curricula suitable for modern young women, and a desirable reputation for the school. Dr. Proctor established a balanced budget and by so doing eliminated the many debts of the seminary. He is responsible for the varied curricula open to students. His geniality and wisdom have given the school its enviable standing and name.

Enrollment has increased from less than thirty to over three-hundred students. The campus has increased in size and beauty. Several private homes have been converted into dormitories. Construction of Proctor Hall supplied the school with a larger library, a modern dormitory, music rooms, and other necessary facilities. As a result of Dr. Proctor's belief that progress is essential to success, Westbrook is now a respected institution.

Not only is he a dynamic individual, but he is also an inspiration both to the community and to the Westbrook Family. He has established lasting relationships with other leading educators throughout this area. He is respected as a man and as an administrator.

His serene expression has brought tranquility; his soft voice, reassurance; his good sense, security. His wisdom and patience are a pillar of strength to all. For twenty-five years Dr. Proctor has set high standards for the school. His influence will remain throughout the years to come. There is only one way to express our gratitude: by upholding the traditions President Proctor has established.



These are the days we will always remember
Carefree, gay, and free
Our college days that began in September
In our hearts will always be.

Here's to plays, the parties and the picnics
Heres to friends we came to know so well
Never forget the fun that we have shared here
Never forget the faculty so dear.

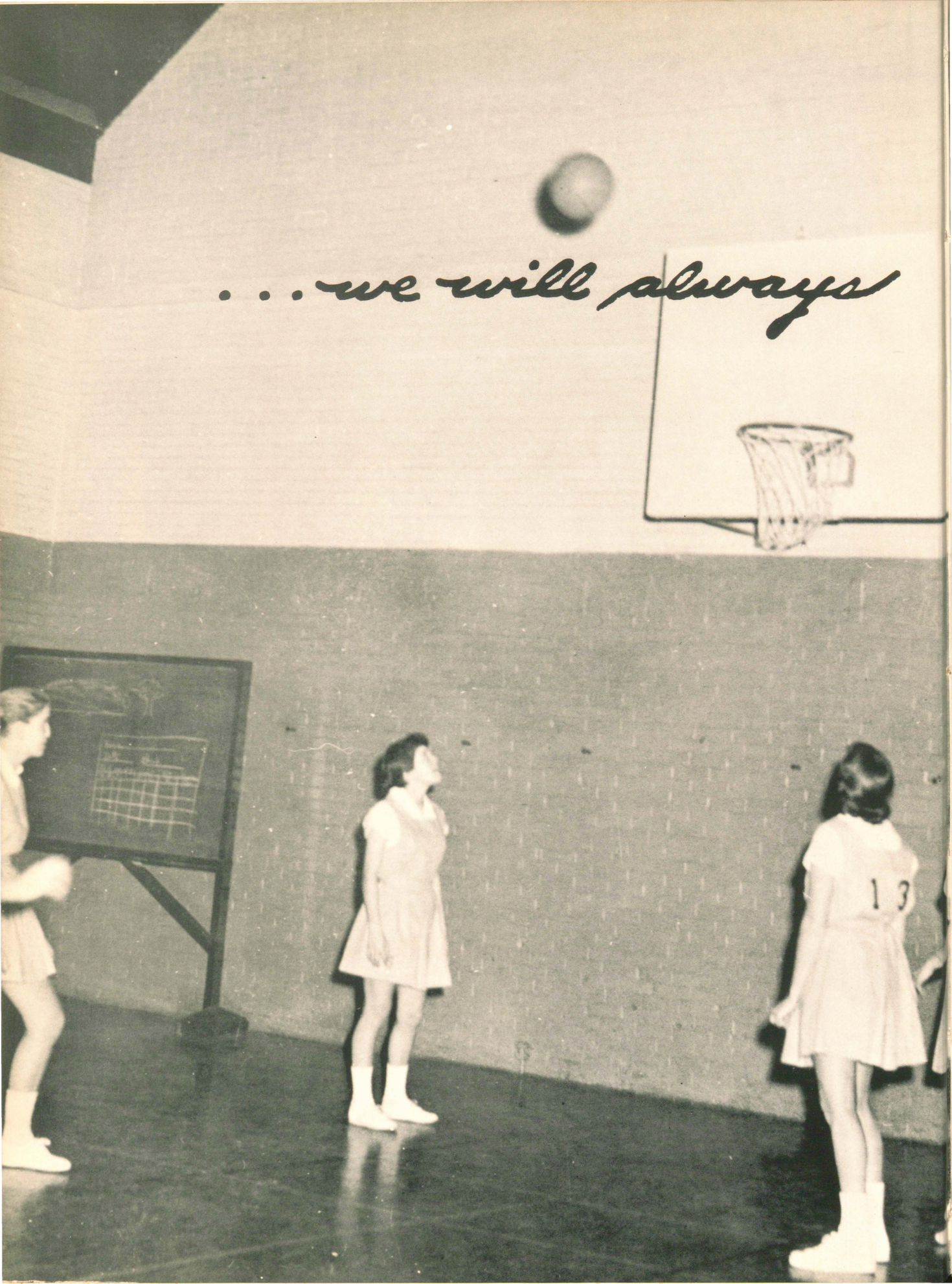
Maroon and Gray we'll always be faithful
Pledging our love to you
Onward we march with pride in our colors
Colors to which we'll ere be true.

These are the days we will always remember
While we're young and gay
When we go forth leaving our campus
As part of the Westbrook Way.

These are the days...



... we will always



remember . . .





... Carefree, gay, and free



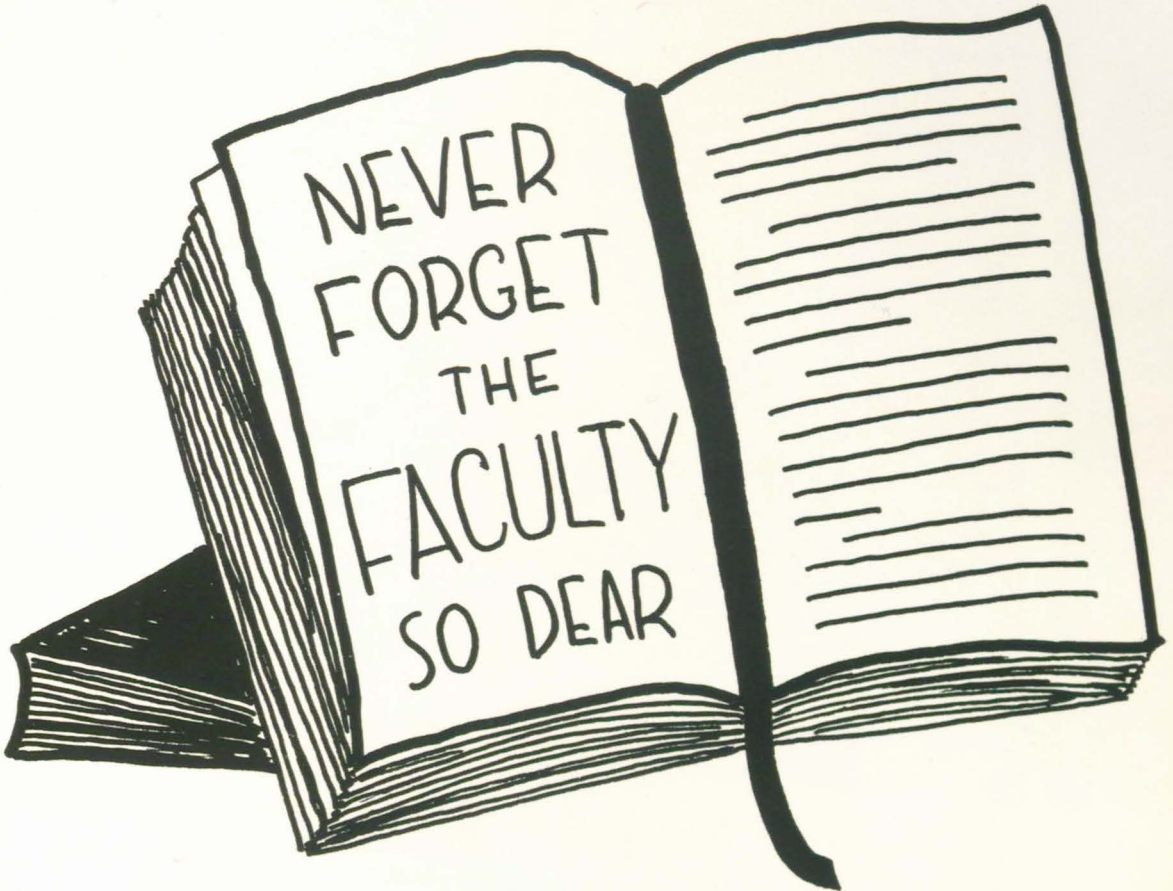
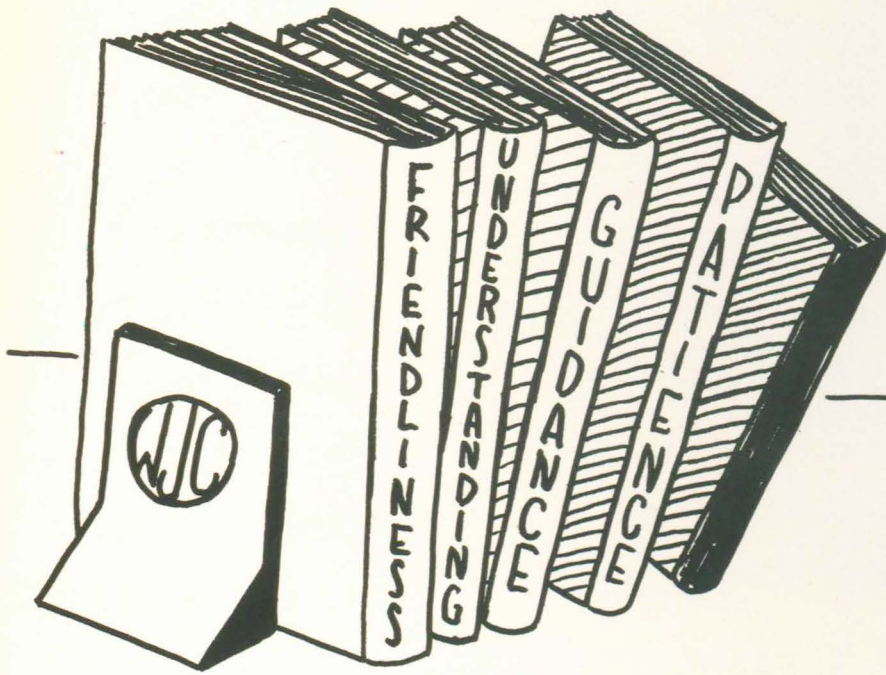
Mr. Richard F. Bond

DEAN OF THE COLLEGE



Miss Margaret L. Giroux

DEAN OF RESIDENCE



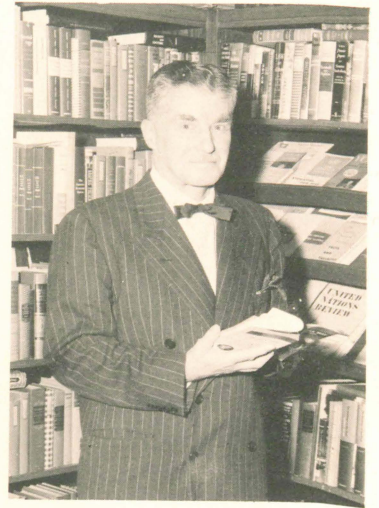


Department of English

Seated: Miss Grace A. Dow, Chairman; Mr. Richard F. Bond
Standing, left to right: Mr. David E. Smith, Mrs. Ruth T. Huestis,
 Mr. W. Clapham Murray, Mrs. Dorothy Healy.



Department of Psychology
 Mr. Arthur L. Freundlich



History of Art and Pottery
 Mr. Robert Imlay



Department of Languages
 Mr. Daniel Dacey



Department of Secretarial Science

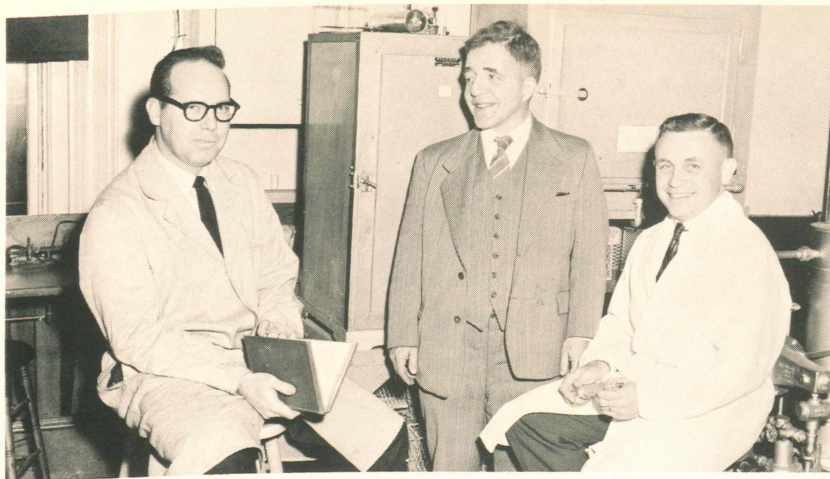
Seated: Mrs. Marion Cheney; Miss Thelma Hillson, Chairman.
Standing, left to right: Miss Pauline D. Thibault, Mrs. Bernice C. Clark,
 Miss Elizabeth Honan.



Department of Retailing
 Miss Constance Curry



Department of Journalism
 Miss Greta Kerr
 Director of Public Relations



Department of Science

Left to right: Mr. Carlyle Lewis; Mr. John L. Gordon; Mr. Edward O. Hooghkirk, Chairman.



Department of Home Economics

Left to right: Mrs. Jean Stevens; Miss Lillian Putnam, Chairman.



Department of Social Science

Left to right: Mr. W. Gregor MacFarlan, Chairman; Mr. Bradford Garniss.



Department of Music
Left to right: Mr. Marshall F. Bryant,
Chairman; Miss Priscilla Riley.



Department of Arts and Crafts
Miss Lucille Kidder

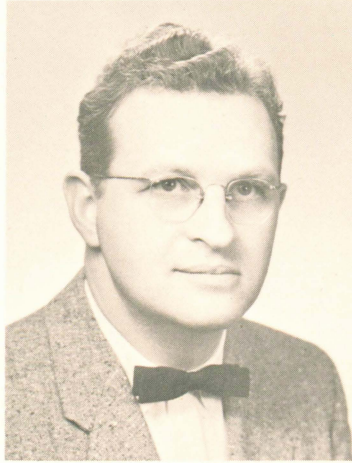


Department of Physical Education
Left to right: Mrs. Lillian Lee, Chairman, Miss Barbara Moore.

STAFF



Miss Jadine O'Brien
Alumnae Secretary



Mr. Myron Hager
Director of Admissions



Mrs. Ruth Crouch
Librarian



Mrs. Daphne Gay
Secretary to the Dean



Mr. Oliver Gerry
**Superintendent Buildings and
Grounds**



Miss Kathryn Butterfield
Bursar

Mrs. Hazel Bassett
Cafeteria Manager

Mrs. Doris Burnell
Clerk, Dean's Office

Miss Elsie Bisbee
Assistant to Bursar

Dr. Gizela Davidson
College Physician

Mrs. Corinne Jackson
Clerk, President's Office

Mrs. Lillian Graves
Office Nursing

Miss Barbara MacInnes
College Nurse

Mrs. Beatrice Le Blond
Dining Room Hostess

Mrs. Nellie Tarr
Assistant Secretary, Alumnae
Association

Mr. Robert Mills
Assistant to Superintendent of
Buildings and Grounds

Dr. Albert Moulton
Consulting Eye Specialist

Mrs. Mary Mills
Assistant to Bookstore Manager

Dr. Alvah Thompson
Consulting Dentist

Mrs. Philip Selberg
Equitation

Mrs. Edith Weren
Secretary, Admissions Office

Miss Doris Tibbetts
Head Housekeeper

Mrs. Katherine Yates
Switchboard Operator



IN MEMORIAM

The entire Westbrook family, faculty as well as students, was deeply saddened by the loss of Mr. Philip Selberg, instructor of equitation. Mr. Selberg will always be remembered for his pleasant, friendly manner, and for his sincere interest in our school.



MRS. MILTON D. PROCTOR

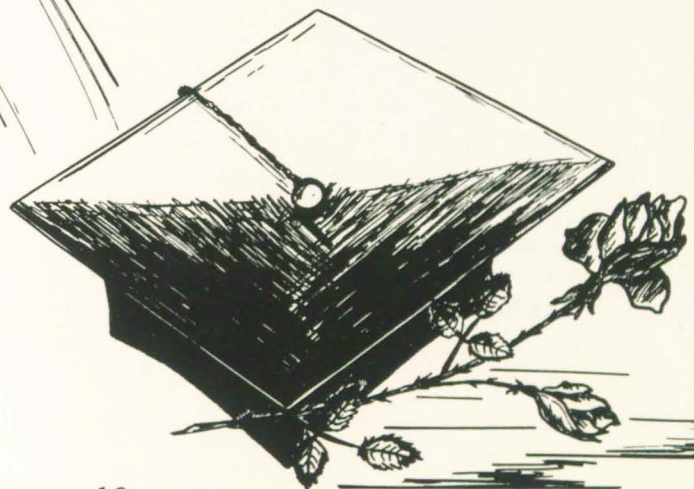
The retirement of President Milton D. Proctor will mark the retirement also, in a sense, of a woman whose contributions to the growth and prestige of Westbrook Junior College have been many and important.

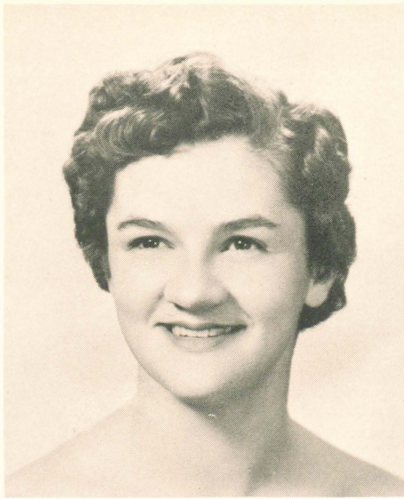
Mrs. Proctor's graciousness as a hostess and her steadfast devotion to the Westbrook family are qualities which have been of special importance to the college. Her unique talents enabled her, during the war emergency, to aid the college by becoming manager of the bookstore. Following the war the bookstore continued to operate efficiently under her able management.

Originally a teacher herself, Mrs. Proctor has always been particularly sensitive to the problems and the rewards of education, but it is perhaps her charming and gracious presence which has most permanently been felt and appreciated by those who have known and admired her.

The Westbrook family, for many years to come, will regard Mrs. Proctor, with affection, as one of its own.

Here's to friends we
came to know so well...





MARJORIE E. ABBOTT

"Not too serious, not too gay, but a jolly good girl in work and play."

**Liberal Arts
Day Hop**

**408 Forest Avenue
Portland, Maine**

Student Religious Association 1, 2; Outing Club 1, 2; Masque and Candle 2.

**NANCY JEAN ABBOTT
"Abbe"**

"Thought is deeper than all speech."

**Secretarial Science
Proctor Hall**

**11 Oak Avenue
South Paris, Maine**



**ELIZABETH C. BAILEY
"Betty"**

*"Good in sports, a complexion fair,
As for success, she'll surely get there."*

**Secretarial Science
Bell House**

**11 Holly Lane
Cohasset, Massachusetts**

Women's Athletic Association, Council 1, 2, Publicity Manager 2; International Relations Club 1, 2; Interhouse Sports 2; Junior Varsity and Varsity Sports 1, 2; Glee Club 1, 2; Faux Pas 2; Class Vice-President 1.

SHIRLEY BAILEY

"Nothing great was ever achieved without enthusiasm."

**Pre-Professional Nursery School
Proctor Hall**

**11 Merrill Street
Amesbury, Massachusetts**

Interhouse Sports 1, 2; Cheerleader 1; Women's Athletic Association 1, 2; Chapel Choir 1.



JANICE BENOIT
"Jan"

"Skier with personality—courtesy and good nature."

**Junior College General
Deering House**

**13 Allen Avenue
Auburn, Maine**

International Relations Club 2; Tower Staff 2; Women's Athletic Association, Council 2;
Interhouse Sports 1, 2; Outing Club 1, President 2; May Weekend Committee 1.



JOANNE L. BRACKETT
"Josie"

*"The whisper of a pretty girl can be heard
further than the roar of a lion."*

**Junior College General
Proctor Hall**

**486 Loring Avenue
Salem, Massachusetts**

Glee Club 1, 2; Vice-President, Proctor Hall 2; Outing Club 1, 2; Women's Athletic Association 1, 2; Tower Staff 2.

SANDRA ELIZABETH BRANSON
"Sandy"

*"A pretty girl with beautiful clothes,
Big brown eyes and a turned-up nose."*

**Journalism
Day Hop**

Margray 2.

**Stonehedge
South Windham, Maine**



SANDRA L. BUDD
"Sandy"

*"Politeness is to do and say,
The kindest things in the kindest way."*

**Business
Melville House**

**490 Broadway
Methuen, Massachusetts**

Outing Club 1, 2; Women's Athletic Association 1, 2; May Weekend Committee 1.



ELIZABETH JANE BURBANK
"Burpee"

"Where there's music, there can't be mischief."

Pre-Professional Nursery School
Proctor Hall

Monroe
Maine

Glee Club 1, 2; Canter Club 1, 2; Outing Club 1, 2; Women's Athletic Association 1, 2; Interhouse Sports 1, 2.

PATRICIA A. CALKIN
"Pat"

"Her ways are ways of pleasantness and all her paths are peace."

Medical Secretary
Day Hop

5 Morse Street
Freeport, Maine

Varsity Basketball 1, 2; Tower 2; Interhouse Sports 2; Day Hop Secretary 2; Women's Athletic Association 1, Junior Council 2; Science Club 1, 2.



EMILY A. CATHCART
"Em"

"Is she not passing fair? Fairer than tongue can name thee."

Junior College General
Proctor Hall

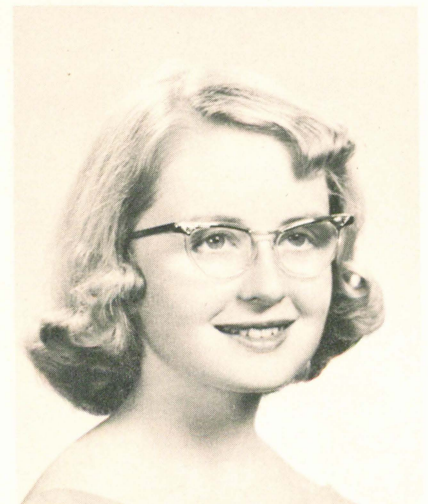
97 South Avenue
New Canaan, Connecticut

MARY CAULFIELD

"Sometimes quiet is an unquiet thing."

Medical Secretary
Proctor Hall

Orrington
Maine



RUTH W. CHADWICK
"Chad"

"Gentle of speech, beneficent of mind."

Pre-Professional Nursery School
Proctor Hall

156 Maple Street
Branford, Connecticut

Junior Dean 2; Student Council 1; Chapel Choir 1; Outing Club 1; Class Vice-President 2.



ANNA T. CHANDLER

"Sleep is the best cure for waking troubles."

X-Ray Technician
Day Hop

New Gloucester
Maine

Science Club 1, 2; Masque and Candle 2.



MARY ALICE CHANDLER

*"For where is any author in the world
Teaches such beauty as a woman's eye?"*

Liberal Arts
Day Hop

New Gloucester
Maine

Glee Club 1, 2; Science Club 1; Masque and Candle 1, Vice-President 2; Tower Staff 2.



CAROL CHAPMAN

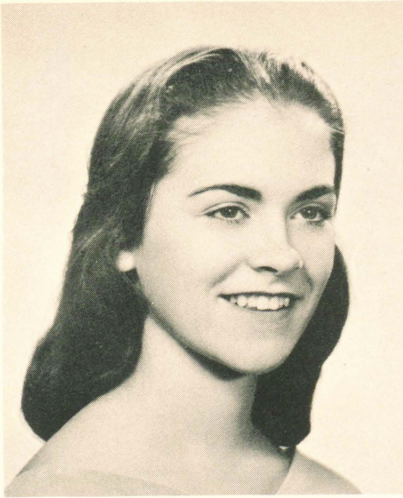
"Friendship is the wine of life."

Pre-Medical Technologist
Day Hop

732 Ocean Avenue
Portland, Maine

Women's Athletic Association 1, 2; Science Club 1, 2.





MARTHABELLE CHASE

"Variety is the spice of life."

**Retailing
Houghton Hall**

**41 School Street
Chatham, Massachusetts**

Retailing Club 1, 2; Women's Athletic Association 1, 2; International Relations Club 1;
Outing Club 1, 2; Interhouse Sports 1, 2.

JANINE O. CLOUTIER

"Jean"

*"Ready for mischief, ready for fun
Willing to talk to anyone."*

**Business
Bell House**

**280 Pine Street
Lewiston, Maine**

Outing Club 1, 2; Women's Athletic Association 1, 2; Interhouse Sports 1, 2; Tower
Staff 2; Maroon and Gray 1, 2.



DOROTHY LOUISE COBB

*"It is not enough to do good;
one must do it the right way."*

**Pre-Nursery
Houghton Hall**

**Aroostook State Farm
Presque Isle, Maine**

Glee Club 1, 2; Outing Club 1, Council 2; Science Club 2; Interhouse Sports 1, 2; Women's
Athletic Association 2.



ELISA WRIGHT COLLINS

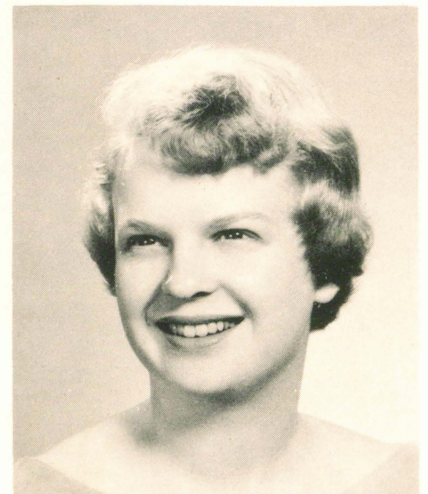
"Lisa"

"Not so quiet as she would appear."

**Junior College General
Melville House**

**397 Country Road
Barrington, Rhode Island**

Glee Club 1, 2; International Relations Club 2; Interhouse Sports 1, 2; House Council 2;
May Weekend Committee 1.



PATRICIA ANN COLLINS
"Pat"

*"Happy-go-lucky, careless, and free,
Nothing there is that troubles me."*

**Medical Records Librarian
Melville House**

**36 Tower Road
Lexington, Massachusetts**

Science Club 1, 2; Tower 2; Outing Club 1, 2.



JUDITH ANNE COLWELL
"Judy"

"How near to good is what is fair."

**Junior College General
Deering House**

**Winnacut Road
Stratham, New Hampshire**

Glee Club 1, 2; Canter Club 1; Interhouse Sports 1, 2.

PATRICIA S. CORBETT

"Friendship and sportsmanship equal a well-liked gal."

**Junior College General
Bell House**

**176 Woodlawn Circle
East Hartford, Connecticut**

Varsity Sports 1, 2; Tower Staff 2; Women's Athletic Association; Council and Junior Council 1.



ANNE ELIZABETH CORBRIDGE

*"When there is fun she's always in it,
Never still for half a minute."*

**Retailing
Melville House**

**25 Humphreys Road
West Barrington, Rhode Island**

Retailing Club 1 2; Women's Athletic Association 1; Outing Club 2; International Relations Club 2; Interhouse Sports 1, 2; May Weekend Committee.



MARILYN J. DAVIDSON

"I never do anything until I'm sure what to do."

**Medical Technology
Houghton Hall**

**North Conway
New Hampshire**

Science Club 1, 2; Women's Athletic Association 2.



NANCY DAVIS

"Davy"

*"Mischief glints within her eye,
A sparkle of laughter that will never die."*

**Junior College General
Deering House**

**8 Reservoir Street
Nashua, New Hampshire**

Field Hockey 2; Student Council 2; International Relations Club 1, 2; Tower Staff 2; Glee Club 2; Inter-House Sports 1, 2; Tennis Team 1, 2; Faux Pas 2; Maroon and Gray 1, 2; Badminton 1; Women's Athletic Association 1, 2.



VIVIAN DAY

"Viv"

"Friendship and sportsmanship equal a well-liked girl."

**Pre-Professional Nursery School
Proctor Hall**

**"Wyman" Road
Westford, Massachusetts**

Glee Club 1, 2; Women's Athletic Association 1, 2; Outing Club Council 2; Interhouse Sports 1, 2; Chapel Choir 1.



LOUISE DiBIASE

"A sprightly manner, a lively sense of humor."

**X-Ray Technique
Day Hop**

**13 Fox Street
Portland, Maine**

Women's Athletic Association 2; Interhouse Sports 1, 2.

NANCY ELIZABETH DORAN

"Beware of the quiet ones—they'll surprise you."

**Medical Technology
Melville House**

**80 Western Avenue
Biddeford, Maine**

Science Club 1, 2; International Relations Club 2; Maroon and Gray 1; Interhouse Sports 1; May Weekend Committee.



MEIRADOR A. DUNCAN
"Dor"

"Sports and good times are the fruits of life."

*Died March 1978
Killed by car in Fla.*

**Junior College General
Melville House**

**Beckett Avenue
Short Beach, Connecticut**

Glee Club 1, 2; Outing Club 1, 2; Women's Athletic Association 1, 2; Interhouse Sports 1, 2; Faux Pas 1; Softball 1, 2; Basketball 1, 2.

FRANCES ANN DUNNING
"Fran"

"Personality plus intelligence equals success."

**Medical Secretarial
Houghton Hall**

**84 Crestmont Road
Bangor, Maine**

Women's Athletic Association 1, 2; House Council 1; Outing Club 1, 2; Varsity Sports; International Relations Club 2; Interhouse Sports 1, 2; Science Club 2; Tower Staff 2; Maroon and Gray 1, 2.



JOYCE A. EARNSHAW
"Ernch"

"She is never quiet but when she is sleeping."

**Secretarial Science
Melville House**

**344 Lawrence Street
Lawrence, Massachusetts**

Outing Club 1, 2; Women's Athletic Association 1, 2; Canter Club 1; International Relations Club 1; Maroon and Gray 2; Interhouse Sports 2.



DONNA RUTH ELLIGTT

"The slim sophisticate with modern tastes."

**Liberal Arts
Bell House**

**230 Burncoat Street
Worcester, Massachusetts**

Outing Club 1, 2; Canter Club 1; Masque and Candle 1; Women's Athletic Association 1, 2; Tower 2.

MARGO ELLIS

*"Work and worry have killed many a man.
Why should I take the chance?"*

**Junior College General
Deering House**

**174 Pond Street
South Weymouth 90, Massachusetts**

International Relations Club 1; Tower Staff 2; Women's Athletic Association 1, 2; House Council 2; Interhouse Sports 1, 2; Margray 1, 2; Outing Club 1; Maroon and Gray 2.



ROMAINE F. EMILIO
"Ro"

"A good sport she is, a jolly good friend, on whom for anything you can depend."

**Journalism Secretary
Melville House**

**31 Hall Street
Haverhill, Massachusetts**

Chairman—May Weekend; Junior Dean 2; House Council; International Relations Club 2; Tower 2; Class President 1, 2.



CAROL ANN ENOS

"The smile that won't come off."

**Junior College General
Melville House**

**17 Conant Avenue
Gloucester, Massachusetts**

Interhouse Sports 1, Canter Club 1; Outing Club Council 2; Outing Club 1, 2; Student Council 2; Women's Athletic Association 1, 2.



STACIA ERAKLIS

"Look out upon the stars, And shame them with thine eyes."

**Medical Secretary
Day Hop**

**4 Washburn Avenue
Portland, Maine**

Science Club 1, President 2; Junior Dean 2; Christmas Play 1; Tower, Copy Editor 2.



BARBARA LEE ERNST
"Barb"

"She appears harmless—but look out."

**Medical Secretary
Melville House**

**22 Fottler Avenue
Lexington 73, Massachusetts**

Women's Athletic Association 1, 2; Science Club 1, 2; International Relations Club 1, 2.

MARILYN L. FARNSWORTH

"It's easy to be natural when you're naturally nice."

**Junior College General
Day Hop**

**24 Elmwood Street
Portland, Maine**

Glee Club 2.



CYNTHIA ANDEN FAUNCE
"Cindy"

"A good sport—a fine friend."

**Junior College General
Deering House**

**62 Broad Street
Westfield, Massachusetts**

Glee Club 1, 2; Junior Varsity and Varsity Sports 1, 2; Margray 1, 2; Interhouse Sports 1, 2; Women's Athletic Association 1, Council 2; Hockey, Manager 2; Tower Staff 2; Maroon and Gray 2; House Council 1, 2.



SUE FIELD

"Never too busy, never too tired to give a helping hand."

**Secretarial Science
Day Hop**

**Cape Cottage Hotel
Cape Cottage, Maine**

Junior Dean; Women's Athletic Association, Junior Council 1, Senior Council 2; Day Hop Treasurer 1; Interhouse Sports; Maroon and Gray Sports; Softball 1, 2.

TYRA FINDELL

"Teri"

*"An extremely lovable, laughable miss—
one of sweet sincerity bliss."*

**Pre-Nursery
Melville House**

**60 Coburn Road
Manchester, Connecticut**

International Relations Club 1, 2; Masque and Candle 1, 2; House Council 2; Outing Club 1, 2; Tower Staff 2; Glee Club 1, 2; Student Religious Association 1, 2; Faux Pas 1, 2.



CAROL JANE FINLEY

"Finny"

"Don't let that red hair fool you."

**Junior College General
Deering House**

**30 Woodland Street
Arlington, Massachusetts**

Women's Athletic Association 1, 2; Outing Club 2; International Relations Club 1, 2; Interhouse Sports 1, 2; Maroon and Gray 1, 2; Waitress 2; Switchboard 1; Tower Photography Editor 2.

NOREEN FITZGERALD

"Fitz"

"An archangel, a little damaged."

**Medical Secretary
Melville House**

**North Road
Montgomery, Massachusetts**

Outing Club 1, Council 2; Women's Athletic Association 1, 2; Maroon and Gray 1, 2; Interhouse Sports 1, 2.



CONSTANCE JUDITH FORBES
"Connie"

"Rare is the union of beauty and modesty."

Retailing
Deering House

12 Whittemore Road
Newton 58, Massachusetts

Glee Club 1, 2; Retailing Club 1, 2; Junior Varsity Hockey 2; International Relations Club 2; Masque and Candle 2; Faux Pas 2; Outing Club 1; Maroon and Gray 1, 2; Interhouse Sports 1, 2.



JUDITH ANNE FORBES

"Men of few words are the best men."

Retailing
Houghton Hall

122 Danehill Road
Newton Highlands, Massachusetts

Outing Club 1; Secretary 2; Retailing Club 1, 2; Glee Club 1; Women's Athletic Association 1, 2.

LAURETTA FOSTER

"It is a friendly heart that has plenty of friends."

Liberal Arts
Day Hop

141 Neal Street
Portland, Maine

Student Religious Association 1, 2.



ANN FOX

"Peaceful ways and calm words—an unhurried and unruffled manner."

Junior College General
Melville House

80 Barney Street
Rumford 16, Rhode Island

Interhouse Sports 1, 2; Outing Club 1, 2; International Relations Club 2; Women's Athletic Association 1, 2; Maroon and Gray 1, 2.



NANCY STOWE FRAIL

"As full of spirit as the month of May."

**Junior College General
Houghton Hall**

**4 Applegarth Street
Newton Centre, Massachusetts**

Outing Club 1, Treasurer 2; Glee Club 1, 2; Women's Athletic Association 1, 2; Interhouse Sports 1, 2; Student Council 2; International Relations Club 1; 2.

BARBARA FRASER

"Barb"

*"Hair of black, eyes that dance,
object of many an envious glance."*

**Pre-Medical Technology
Deering House**

**78 Leroy Drive
Riverside 15, Rhode Island**

Science Club 2; Women's Athletic Association, Junior Council 2; Outing Club 1, 2; Junior Varsity Basketball 1, 2; Maroon and Gray 1, 2; Interhouse Sports 1, 2.



ANNE M. FRAWLEY

"Kindness and quietness are the traits of a lady."

**Medical Secretary
Deering House**

**241 Silver Road
Bangor, Maine**

Outing Club 1; Women's Athletic Association 1; Science Club 2; House Council 2.

BETTY FRENCH

"Still water runs deep."

**Secretarial Science
Houghton Hall**

**118 Atlantic Street
North Quincy, Massachusetts**

International Relations Club 1, 2; Tower Staff 2; Women's Athletic Association 1, 2.



CAROL FROST
"Frosty"

"A witty woman is a treasure."

Retailing
Proctor Hall

Masque and Candle 1, President 2; Outing Club 1; Women's Athletic Association 2; Retailing Club 1, 2; House Council 2; Tower 2; Student Religious Association 2; Interhouse Sports 1.

32 Elizabeth Street
Attleboro, Massachusetts



BETH EDITH GALLOWAY

*"Something to talk about, something to do
Something to laugh about, the whole day through."*

Secretarial Science
Proctor Hall

R. F. D. # 4
Bridgeton, New Jersey

Glee Club; President Senior; Interhouse Volleyball; Proctor House President 1956-1957.

MARILYN GARRETT
"Lyn"

*"One knows her by her jolly air,
her laughing eyes, her jet black hair."*

Junior College General
Deering House

Glee Club 1, 2.

4 Clachan Place
Rumford, Maine



PHYLLIS ANN GEORGE
"Phyl"

"If speech is worth a dollar, Silence is worth two."

Secretarial Science
Deering House

1034 Belmont Street
Manchester, New Hampshire

Glee Club 2; International Relations Club 2; Women's Athletic Association 1, 2; Interhouse Sports 2.



SALLY ANN GIBSON
"Gib-Farmer"

"Always laughing, full of fun, she gets along with everyone."

**Junior College General
Bell House**

**71 First Street
Bangor, Maine**

J. V. Hockey 2; International Relations Club 2; Interhouse Sports 1, 2; Masque and Candle 1, 2; Tower Staff 2; Women's Athletic Association 1, 2; May Weekend Committee 1; Outing Club 1, 2; President, Bell House 2.

MARTHA JANE GILSON
"Marty"

*"Grace was in all her steps, heaven in her eye,
in every gesture dignity and love."*

**Junior College General
Bell House**

**12 Brooks Street
Winchester, Massachusetts**

Junior Varsity Sports 2; Interhouse Sports 1, 2; Student Council 2; International Relations Club 1, 2; May Weekend Committee 1; Women's Athletic Association 1, 2; Tower Staff 2.



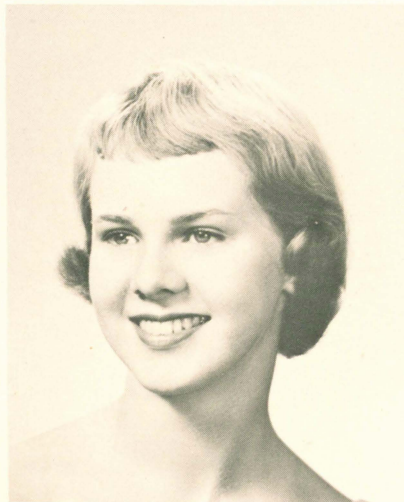
ELLEN LUCILLE GRAHAM
"EJ"

"Kindness is the key to friendship."

**Retailing
Deering House**

**35 Alvin Avenue
East Milton, Massachusetts**

Outing Club 1; Retailing Club 1, 2; Interhouse Sports 1, 2; Cheerleader 1, 2; Varsity Softball 1, 2; International Relations Club 2; Margray 2.



JO-ANN GREELEY
"Jo"

*"Oh so quiet, oh so sweet
A nicer girl you'll never meet."*

**Retailing
Day-Hop**

**165 Brentwood Street
Portland, Maine**

Retailing Club 1, 2.



DYLA LEO GREENLAW

"A merry heart maketh a cheerful countenance."

**Junior College General
Proctor Hall**

**156 Main Street
Fairfield, Maine**

Glee Club 1, 2; Interhouse Sports 1, 2; Women's Athletic Association 1, 2.



DALE ANN HAGENLOCH

"Absence makes the heart grow fonder."

**Secretarial Science
Houghton Hall**

**18 Thackeray Road
Wellesley Hills, Massachusetts**

Women's Athletic Association 2; Glee Club 1; Tower Staff 2.

ELIZABETH SARANDO HAMLINEX

*"Let deeds, not words, express
Thine exceeding loveliness."*

**Liberal Arts
Day-Hop**

**119 Morning Street
Portland, Maine**



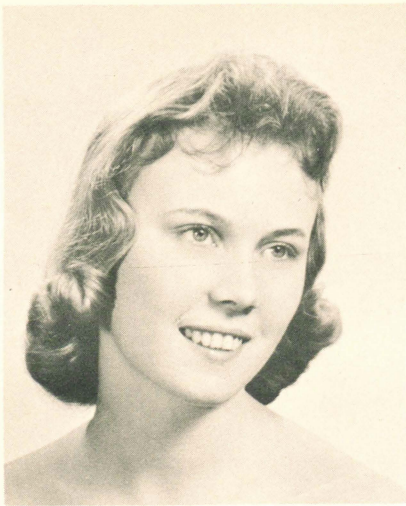
ANN HAYDEN

"True to your word, your work and your friends."

**Junior College General
Melville House**

**51 Barton Street
Presque Isle, Maine**

Canter Club Vice-President 1, Treasurer 2; Women's Athletic Association Council 1, 2; Junior Dean 2; Maroon and Gray 1, 2.



MARGARET LOUISE HEBERT
"Peggy"

"A daughter of the gods, divinely tall and most divinely fair."

Medical Secretary
Day Hop

97 Brown Street
Westbrook, Maine

Junior Varsity Basketball 1, Women's Athletic Association, Junior Council 1, 2; Science Club 2; Interhouse Sports 1; President of Day Hops 2.

SHIRLEY ANNE HOLMES
"Shirl"

"The ups and downs of life do not disturb me."

Medical Secretarial
Melville House

17 Bellamy Street
Brighton, Massachusetts

Outing Club 1, 2; Science Club 2; Tower Staff 2; International Relations Club 2.



JOAN ANN HORSEY

"Friendship is a gift to the gods and a most precious boon to man."

Liberal Arts
Deering House

65 Westover Avenue
West Caldwell, New Jersey

Glee Club 1, 2; Faux Pas 2; Interhouse Sports 1, 2; Waitress Co-Captain, Margray, Sports Editor 2; International Relations Club 2; Tower Editor 2; Women's Athletic Association 2.



BEATRICE HUESTON
"Bea"

*"Life is jest, and all things show it,
I thought so once, but now I know it."*

Pre-Nursery
Day Hop

44 Newberry Street
Portland, Maine

Women's Athletic Association, Council 2; Interhouse Sports 1, 2.



DEBORAH ANNE HUMBY
"Debbie"

"Goodness is a rare and lasting thing."

**Junior College General
Deering House**

**29 Longfellow Road
Needham Heights, Massachusetts**

Glee Club 2; Science Club 1, 2; Outing Club 1; Women's Athletic Association 1, 2.



DEBORAH LAWRENCE JESSOP
"Jess"

"The world has a welcome for such women."

**Liberal Arts
Deering House**

**39 Berkeley Street
Nashua, New Hampshire**

Margray 1, International Relations Club, Recording Secretary 1, President 2; Margray, Editor-in-Chief 2; Varsity Tennis, Women's Athletic Association, Interhouse Sports 1, 2.



CAROLE KATES

"A sign of wisdom is continued cheerfulness."

**Junior College General
Day Hop**

**16 Washburn Avenue
Portland, Maine**

Glee Club 1, 2; Margray 1, 2; Tower Staff 2.



DIANNE ADELAIDE KIMBALL
"Kim"

*"Age cannot wither her, nor custom stale
Her infinite variety."*

**Liberal Arts
Proctor Hall**

**31 Fresh River Avenue
Hingham, Massachusetts**

Masque and Candle 1, 2; Interhouse Sports 1, 2; Softball 1; Cheerleader 1; Glee Club 1, 2.





EMILY SYLVIA LAAKSO

*"She speaketh not, and yet there lies
A conversation in her eyes."*

**Liberal Arts
Proctor Hall**

Women's Athletic Association 1, 2.

**94 Benwell Road
Rochester, New York**

**BERNICE KAY LEBARES
"Bunny"**

"A sign of wisdom is continued cheerfulness."

**X-Ray Technique
Day Hop**

**796 Brighton Avenue
Portland, Maine**

Science Club 1, 2; Women's Athletic Association 1; International Relations Club 1, 2; Interhouse Sports 1, 2.



**KATHLEEN LEWIS
"Kathy"**

"Her nature makes her a friend to all."

**Liberal Arts
Houghton Hall**

**Hotchkiss Grove
Branford, Connecticut**

House Council 2; Junior Dean Vice-President 2; Women's Athletic Association 1, 2; Council 1, President 2; Outing Club 1, 2, Council 2; Varsity Sports 1, 2.

**JUDITH ANNE MAKIN
"Judy"**

"Give me time to be gay—give me laughter."

**Retailing
Bell House**

**16 Orchard Street
Taunton, Massachusetts**

Retailing Club 1, 2; Student Religious Association 1, 2; Tower Staff 2; Women's Athletic Association 1; Maroon and Gray 1.



EMELIE RUTH MARGESON

"She has a way that immediately wins everyone's heart."

**Business
Melville House**

**120 Highview Avenue
Melrose, Massachusetts**

Glee Club 1, 2; Interhouse Sports 1, 2; International Relations Club 2; Outing Club 2, House Council 2, May Weekend Committee 1.



JOANNE CAROL MAYER

"Jo"

"The mildest manners, and the gentlest heart."

**Pre-Nursing
Bell House**

**411 Plumtree Road
Springfield, Massachusetts**

Glee Club 1, 2; Class Secretary 1; Interhouse Sports 1, 2; Women's Athletic Association 1, 2; Outing Club 1, 2; Junior Dean, Treasurer 2; Field Hockey 2; Tower Staff 2; Faux Pas 2.

BARBARA GALE McDONNELL

"A lovely woman nobly planned; her heart belongs to just one man."

**Pre-Nursery
Melville House**

**13 Wentworth Street
Worcester, Massachusetts**

Student Council Secretary 1, Vice-President, Treasurer 2; International Relations Club 1, 2; Glee Club 1, 2; Outing Club 1, 2; Faux Pas 1, 2; Tower Staff 2.



PATRICIA EMMA MEARS

"Pat"

"A horse! A horse! My kingdom for a horse!"

**Junior Dietician
Deering House**

**13 Eldert Street
New Haven, Connecticut**

Waitress 1, 2; Basketball 1; Canter Club 1, 2; Ride Chairman 2.



GERALDINE J. MICHAUD

"Moonlight in Vermont."

**Junior College General
Houghton Hall**

**30 Forest Avenue
Lewiston, Maine**

House Council 1; President 2; Junior Dean, President 2; International Relations Club 2;
Outing Club 2.

SUSAN ANNE MILES

"Sue"

*"A leader of rank and smile, a good sport
in every sense of the word."*

**Junior College General
Proctor Hall**

**145 Cornwell Avenue
Valley Stream, New York**

Student Council 2; House Council 2; Women's Athletic Association 1; Outing Club 1.



MARSHA RAE MILLER

"A good disposition is God's happiest gift."

**Pre-X-Ray Technique
Day Hop**

**Blanchard Road
Cumberland Center, Maine**

Glee Club 1, 2; Women's Athletic Association 2.

MARTHA ANN MODLICH

"True goodness springs from thy heart."

**Secretarial Science
Bell House**

**Depot Street
Kingston, New Hampshire**

Women's Athletic Association 1, 2; International Relations Club 1, 2; Maroon and Gray
1, 2.



MARY J. MONTOVANI
"Monty"

"Vivacity is the health of the spirit."

**Retailing
Bell House**

Retailing Club 1, 2; Student Religious Association 1, 2; Tower Staff 2; Women's Athletic Association 1; Maroon and Gray 1.

**Cedar Street
Southwick, Massachusetts**



PATRICIA ANN MURDOCK
"Patsy"

"Her laughter and good cheer are always pleasing to the ear."

**Junior College General
Melville House**

**56 Gleason Road
Reading, Massachusetts**

Outing Club Council 2; Varsity Tennis 1, Interhouse Sports 1, 2; Tower Staff 2.

GAIL MURPHY

*"Tall of stature, fair of face,
Her smile is welcomed every place."*

**Junior College General
Bell House**

**712 Salisbury Street
Worcester, Massachusetts**

Glee Club 1, 2; Field Hockey 1, 2; Women's Athletic Association 1, 2; Tower Staff 2; Outing Club 1, 2; Maroon and Gray 2; Interhouse Sports 1, 2.



CYNTHIA ANN NARUSIS
"Cindy"

"She makes sunshine in life's darkest places."

**Medical Secretary
Deering House**

**Ridge Road
West Peru, Maine**

International Relations Club 2; House Council 2; Junior Dean 2; Women's Athletic Association 1, 2; Interhouse Sports 1, 2; Tower Staff 2; Class Secretary 2; Science Club 2; May Weekend Committee 1.



BARBARA MAE O'LEARY
"Barb"

*"So of cheerfulness or a good temper,
the more it is spent, the more of it remains."*

Medical Technology
Day Hop

23 Melbourne Street
Portland, Maine

Science Club 1, 2; Women's Athletic Association 1, 2.



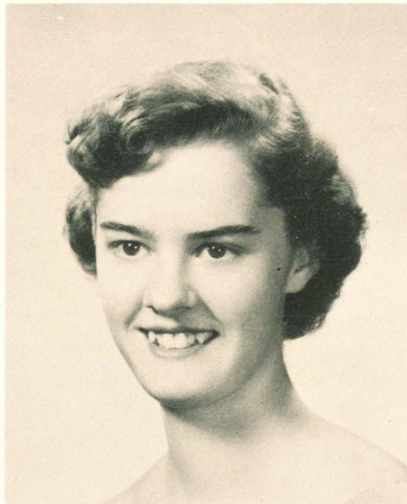
BETTE JOAN PACKARD

"Beauty is part of the finished language by which goodness speaks."

Advertising Manager
Medical Secretary
Day Hop

209 Concord Street
Portland, Maine

Glee Club 1, 2; Science Club 1, Treasurer 2; Student Council 2; Margray, Advertising Manager 2; Interhouse Sports 1, 2; Women's Athletic Association 2.



JAYNE PARKER

"My words and my thoughts are my very own."

Junior College General
Proctor Hall

433 Walnut Street
Manchester, New Hampshire

Glee Club 1, 2; Outing Club 1, 2; Women's Athletic Association 1, 2.



JEAN PERRY

"All good things which exist are the fruits of originality."

Liberal Arts
Deering House

96 West Street
Attleboro, Massachusetts

Glee Club 1, 2; Women's Athletic Association 1, 2; International Relations Club 1; Tower Staff 2; Assistant Editor of Tower Telegraph 2.

DORIS ANN PETERSON

"T'was her thinking of others made you think of her."

**General Business
Melville House**

**6 Crow Lane
Glen Cove, New York**

International Relations Club 1, Treasurer 2; Women's Athletic Association 1, 2; Interhouse Sports 1, 2; May Weekend Committee 1; Maroon and Gray 2.



POLLY ANN PETERSON

"As happy a girl as any in the world for the whole world seems to smile on me."

**Liberal Arts
Bell House**

**80 Sheffield Road
Melrose, Massachusetts**

Women's Athletic Association 2, Junior Council 1; Outing Club 1, 2; Masque and Candle 1, Secretary-Treasurer 2; International Relations Club 2; Junior Varsity Sports 2; Interhouse Sports 1, 2; Tower staff 2.

MARGARET ANN PHILLIPS

"Maggie"

"The rule of my life is to make business a pleasure and pleasure my business."

**X-ray Technique
Bell House**

**Falmouth Road
Osterville, Massachusetts**

Women's Athletic Association 1, Senior Council 2; Interhouse Sports 1, 2; Varsity Basketball 1, 2; Varsity Field Hockey 2; Varsity Softball 1; International Relations Club 2; Outing Club 2; Maroon and Gray 1, 2; May Weekend Committee 1.



CAROLE PRATO

"Cakesio"

"Take life too seriously and what is it worth?"

**Retailing
Deering House**

**108 Pine Ridge Road
Waban 58, Massachusetts**

Retailing Club 1, 2; Interhouse Sports 2; International Relations Club 1, 2; Maroon and Gray 1, 2; Outing Club 2; Masque and Candle 2.



DOROTHY ANNE PUFFER
"Dody"

"She'll never feel the lack of friends."

Pre-Nursery
Proctor Hall

4 Colby Avenue
Ocean Park, Maine

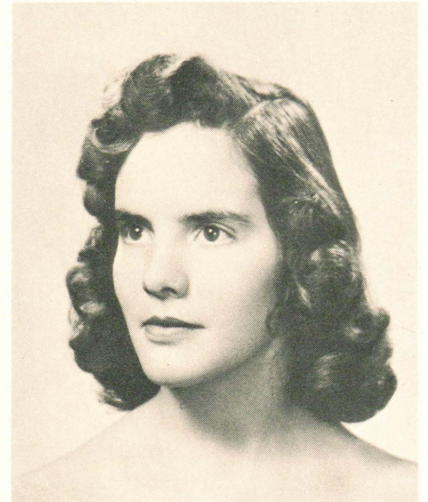
International Relations Club 1, 2; Margray 1, News Editor 2; Chapel Choir 1.

ELIZABETH PUFFER

"She will be bound with garlands of her own."

Houghton Hall
Junior Dietician

4 Colby Avenue
Ocean Park, Maine



SANDRA CAROL PUTNAM
"Sandy"

*"She's full of life, she's full of fun,
Try to find a better one."*

Junior College General
Bell House

10 Elm Street
Thomaston, Maine

Canter Club 1, 2; Interhouse Sports 1, 2; Maroon and Gray 1, 2; Women's Athletic Association Council 1, 2; Junior Varsity and Varsity Sports 1, 2; Outing Club 1, 2; House Council 2.

MARJORIE ANN REID
"Marj"

*"A quiet and a neatly-dressed gal,
With her friendliness, she's one real pal."*

Secretarial Science
Deering House

28 Marble Street
Manchester, Connecticut

Glee Club 1, 2; Women's Athletic Association 1, 2; Interhouse Sports 1, 2; Tower Staff 2.



PATRICIA MYLES ROBINSON
"Robbi"

"Swing away sorrow, touch away care."

Secretarial Science
Bell House

1332 Washington Street
Bath, Maine

Tower Staff 2; Women's Athletic Association 1, Council 2; Interhouse Sports 1, 2; Maroon and Gray 1, 2; Outing Club 1; Junior Varsity Basketball 1.



ELIZABETH M. ROLFE
"Libby"

"It is the gentle, thoughtful heart that is the happy heart."

Retailing
Day-Hop

249 Walton Street
Portland, Maine

Women's Athletic Association 2; Outing Club 1, 2; Retailing Club 1, 2.

MARY ELLEN RUDDY

"While we live, let us live."

Pre-Nursery
Deering House

4 Belmont Street
Amesbury, Massachusetts

International Relations Club 2; Outing Club 2; Glee Club 1, 2; Varsity Hockey 2; Maroon and Gray 1, 2; Women's Athletic Association 1, 2.



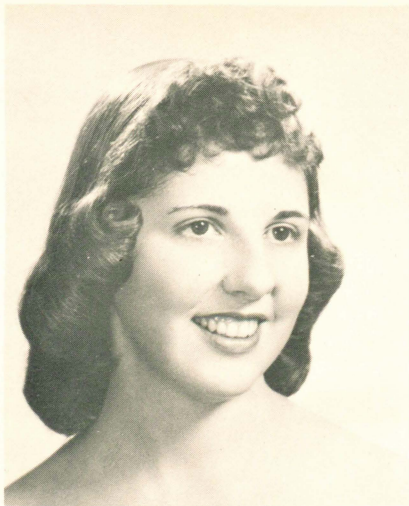
JEAN SANTILHANO

"The ginger in the ginger snap."

Secretarial Science
Melville House

58 Bow Road
Newton Center 59, Massachusetts

Outing Club 1; May Weekend Committee 1; Interhouse Sports 1, 2; Tower, Art Editor 2; House Council 1.



BARBARA JEAN SAULSBURY
"Bobbi"

"Letter writing, that most delightful way of wasting time."

**Junior College General
Deering House**

**Kenilworth Road
Purchase, New York**

Canter Club 1; Women's Athletic Association 1, 2; Tower Staff 2.

BRENDA ANN SCHWARTZ

*"Here and there from morn till night,
Her happy soul is always bright."*

**Liberal Arts
Proctor Hall**

**684 Broadway
Everett, Massachusetts**

Glee Club 1, 2; Women's Athletic Association 1, 2.



DOROTHY JUNE SEMER
"Dot"

"A carefree heart is as rare as gold"

**Retailing
Melville House**

**12 Far View Avenue
West Hartford 7, Connecticut**

Social Chairman 1; Retailing 1, 2; Women's Athletic Association 1; Glee Club 1; Tower Staff 2.



SUE SHATTUCK

"She is pretty to walk with, And witty to talk with."

**Retailing
Deering House**

**8 Winthrop Road
Wellesley, Massachusetts**

International Relations Club 1, 2; Outing Club 1, Vice-President 2; Women's Athletic Association 1, 2.



BARBARA SHIELDS

"The secret of success is constancy to purpose."

**Liberal Arts
Proctor Hall**

**Middle Road
Southboro, Massachusetts**



MARY BETH SHORTALL

"The best time to enjoy Europe is three weeks after you start unpacking."

**Retailing
Houghton Hall**

**1 Regent Avenue
Providence, Rhode Island**

Retailing Club 1; Social Chairman 2; Junior Dean 2; Outing Club 1, 2; Interhouse Sports 1, 2.

ROSAMOND VANNEVAR SLACK
"Roz"

"Someone sweet and always neat."

**Junior College General
Bell House**

**19 Lincoln Street
Arlington, Massachusetts**

Women's Athletic Association 1, 2; Glee Club 2; Masque and Candle 2; Tower Photographer 2; Margray Photographer 2.



SARAH HARTMAN SMITH
"Sallye"

"Gentlemen always seem to prefer blondes."

**Secretarial Science
Houghton Hall**

**300 South Broadway
Tarrytown, New York**

House Council 2; Women's Athletic Association 2; Outing Club 2; Tower Staff 2; Glee Club 1.



FLORENCE H. SPAULDING

"Quiet only to those who don't know her."

**Liberal Arts
Day Hop**

Glee Club 1, 2; May Weekend Committee 1.

**101 Pine Street
Portland, Maine**

JANICE STEVENSON

"Jan"

*"A finer friend you'll never find
With wit and wisdom both combined."*

**Pre-Medical Technology
Day Hop**

**134 Colonial Road
Portland, Maine**

Student Council 1, President 2; Junior Dean 2; Science Club 1, 2; Women's Athletic Association 2.



LINDA STILPHEN

"In quietness and confidence shall be your strength."

**Secretarial Science
Day Hop**

**180 Frances Street
Portland, Maine**

CAROL BARBARA TEAGUE

"Teague"

"A smile for every girl, two for every boy."

**Retailing
Melville House**

**428 Highland Avenue
Winchester, Massachusetts**

Retailing Club 1, 2; Outing Club 1, 2.



BARBARA TULLER
"Tulli"

"Personality plus in knee socks."

Secretarial Science
Deering House

19 Kinsington Avenue
Bradford, Massachusetts

Tower Staff 2; Faux Pas 2; International Relations Club 1, 2; Women's Athletic Association 1, 2; Glee Club 1, 2; Outing Club 1, 2; May Weekend Committee 1.



FRANCES ROSE VALLARIO

*"Full of life, full of pep - just remember
Watch your step."*

Medical Secretary
Bell House

3608 Alabama Avenue S. E.
Washington, D. C.

Women's Athletic Association 1, 2; IRC 1, 2; May Weekend 1; Pageant Committee 1; Interhouse Sports 1, 2; Field Hockey 2; Tower Staff 2; Bell House Secretary 2.



JEWETT BRINKERHOFF VOORHIS
"Judy"

"She makes in our lives a world full of smiles."

Junior College General
Day Hop

122 Neal Street
Portland, Maine

Junior Dean, Outing Club Council 2; Masque and Candle 1, 2; Glee Club 1, 2; Day Hop Vice-President 1; Margray 1, Feature Editor 2; Tower 1, 2; Women's Athletic Association 1, Class Treasurer 2.



LOUISE DAVIS WALKER
"Weeze"

"Bashful blond with the hockey stick."

Secretarial Science
Deering House

103 Governor Bradford Drive
Barrington, Rhode Island

Junior Varsity Hockey 1; Varsity Hockey 2; International Relations Club, Corresponding Secretary 2; House Council 2; Margray 2; Outing Club 1, 2; Women's Athletic Association 1, 2.





JUDITH GAY WANZER

"Character is nurtured midst the tempest of the world."

**Medical Secretary
Bell House**

**19 Tower Road
Hingham, Massachusetts**

Women's Athletic Association; Outing Club · **Faux Pas**; Interhouse Basketball; Canter Club.

PATIENCE WEBSTER

"Pat"

"Patience is the best remedy for every trouble."

**X-Ray Technician
Deering House**

**346 Merrimac Street
Newburyport, Massachusetts**

Women's Athletic Council 1, 2; Varsity Field Hockey 2; May Weekend Committee 1; Maroon and Gray Sports 1, 2; Interhouse Sports 1, 2.



MARILYN PRESCOTT WEEKS

*"In vain are all the charms I can devise—
She hath an art to break them with her eyes."*

**Pre-Nursery
Deering House**

**51 Grove Hill Avenue
Newtonville, Massachusetts**

IRC 1, 2; Outing Club 1, 2; Interhouse Sports 1, 2; Tower 2; Gray Team 1, 2; Hockey Team 2; **Faux Pas** 1, 2; Glee Club 1, 2; Tennis 2; Women's Athletic Association 1, 2.

MEREDITH WEST

"Merry"

"Good humor is the health of the soul."

**Secretarial Science
Bell House**

**1000 Stafford Street
Charlton City, Massachusetts**

Women's Athletic Association 1, 2; International Relations Club 1, 2; Maroon and Gray 1, 2.



DIANE WETMORE
"Di"

"I'm quiet but don't get me started."

**Junior College General
Deering House**

**40 Wyman Road
Lexington, Massachusetts**

Masque and Candle 1, 2; Margray 1, 2; Tower Staff 2.



JUDITH WHITEHEAD
"Judy"

"Softness of smile indicates kindness of character."

**Medical Secretary
Bell House**

**27 Stebbins Avenue
Tuckahoe, New York**

Glee Club 1; Tower Co-editor, Art 2; Science Club 2; Women's Athletic Association 1.



MARY L. WHITWORTH
"Mimi"

"There's a good bit of fun lurking behind her quiet exterior."

**Retailing
Deering House**

**40 Garland Street
Bangor, Maine**

Retailing Club, Secretary-Treasurer 1, 2; Outing Club 1; Interhouse Sports 1, 2; House Council 1, 2.



JEAN WILKINSON

*"The music that can deepest reach,
And cure all ill is cordial speech."*

**Retailing
Melville House**

**129 Swindells Street
Fall River, Massachusetts**

Retailing Club 1, 2; International Relations Club 2; Interhouse Sports 1; Women's Athletic Association 1.





ELIZABETH ANN WILLARD
"Liz-Beth"

*"The reason firm, the temperate will
Endurance, foresight, strength, and skill."*

**Retailing
Proctor Hall**

**Madison
Connecticut**

Field Hockey 1, 2; Retailing Club 1, 2; Women's Athletic Association 1, 2; Student Religious Association 1, 2; Junior Dean 2; House Council 1, 2.

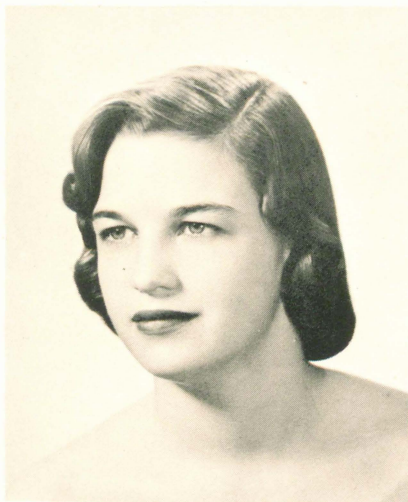
DEBORAH WILLIS
"Debbie"

"A quiet exterior conceals much."

**Junior College General
Proctor Hall**

**Indian Hill Street
West Newbury, Massachusetts**

Glee Club 1, 2; Women's Athletic Association 2; Masque and Candle 2; Outing Club 2; Tower Staff, 2.



NATALIE CLUNET WILSON
"Nat"

"God loveth a cheerful giver."

**Liberal Arts
Proctor Hall**

**1826 South Main Street
Dayton, Ohio**

Canter Club Secretary 1, President 2; Outing Club 1; Maroon and Gray Basketball 1, 2; May Weekend Committee 1; Women's Athletic Association 1, Council 2; International Relations Club 2; Interhouse Sports 2; Tower Staff 2.

GEORGIANA WORMCKE
"Georgia"

"The reward for study is understanding."

**Pre-Nursery
Melville House**

**7 Riverview Road
Rocky Hill, Connecticut**

Women's Athletic Association 1, 2.



CAROL LOUISE WYNOT

"Uproarious laughter and humor personified."

**Secretarial Science
Melville House**

**53 Marshall Street
North Quincy, Massachusetts**

Women's Athletic Association 1; International Relations Club 2; Outing Club 2; Interhouse Sports 1, 2; May Weekend Committee 1.



PRUDENCE YOUNG

"Prudy"

"There are often voice and words in a silent look."

**Medical Secretary
Deering House**

**Spencer Hollow Road
Springfield, Vermont**

Women's Athletic Association 1, 2; Talent Show 1; Outing Club 1, 2.

BARBARA P. ZUCKER

*"A girl who is pleasant, a girl who is gay,
A girl who is happy the live-long day."*

**Retailing
Melville House**

**50 Headley Place
Maplewood, New Jersey**

Retailing Club 1, 2; International Relations Club 2; Interhouse Sports 1, 2; Women's Athletic Association 2.





SENIOR CLASS OFFICERS

Seated: Romaine Emilio, President.

Standing, Left to Right: Ruth Chadwick, Vice President; Cynthia Narusis, Secretary; Judy Voorhis, Treasurer.



CLASS ADVISORS

Mr. David Smith and Mr. Carlyle Lewis.

PROCTOR

DAY HOPS

DEERING

BELLE

E











PROCTOR HERSEY

ZO-HIGGCOI
IONGII-ONZ



FRESHMAN CLASS OFFICERS

Left to Right: Sabra Fullerton, Treasurer; Judy Arnold, President; Karen Jarratt, Vice President; and Nancy Weisser, Secretary.

DAD
YAD
I
STOII
IONS

GODDARD



First Row, Left to Right: Sandra Brown, Ruth Dyer, Martha Pratt, Dawna Oppedisano, Nancy Burnell, Carolyn Cressey, Connie Baker.
Second Row: Joanne Burnham, Arline Brown, Ellen Klev, Sandra Nottage, Deborah Tibbetts, Marilyn Downes, Claudette Roux, Carolyn Harr.
Third Row: Doris Gould, Janice Strout, Evelyn Swanson, Elizabeth Scotten, Maurine Williamson, Nancy McClellan, Ann Sherman, Alvera Donatelle, Carol Sweetzer, Jane Thompson, Brenda Fabricius, Ann Aube, Judith Hall, Janice Dizenzo.

DAY HOPS

"How did the time go so fast?" This is the question most frequently heard in the Day Hop lounge, and activity is the only answer. The Freshmen Day Hops have entered into Westbrook's many activities so whole-heartedly that there has been little time to stop to wonder where the time is going. Then, all of a sudden, it is June and there is time to look back.

This year the Day Hops have been well-represented in almost every organization on campus. We have exhibited our athletic skill by taking second place in the interhouse basketball competitions. Jane Thompson and Martha Pratt were our officers this year, and Debbie Tibbetts was chosen Student Council representative.

The year 1957 has seen one of our fondest dreams come true with the installation of a telephone in the lounge. With the skillful guidance of our advisor, Miss Honan, the Day Hops have managed to maintain the outstanding record that has been established through the years.



First Row, Left to Right: Patricia Andrews, Sara Clifford, Jane Furbush, Rhoda Sonken, Nancy Brown, Rachel Nowell.
Second Row: Patricia Bisson, Sue Wright, Betsy Paton, Jean Morris, Mrs. Maynard.
Third Row: Jane Packard, Jeane Lamenzo, Carole Parsons.
Fourth Row: Patricia Pym, Eleanor Coombs, Marjorie Meyer, Nancy MacQuade, Joan Moran, Barbara Parnin, Janet Moberger, Patricia Hayes, Janice Gregory, Marlene Enos.
Fifth Row: Andrea Stevens, Paula Perry, Linda Oak, Marilyn Brown, Ann Richmond, Jean McCullough, Marion Simpson, JoEllen Synder.

GODDARD HALL

The Goddard girls began their year by electing officers who certainly helped to make the year a happy one. They were: Betsy Paton, President; Sue Wright, Vice President; Peggy Bisson, Secretary; and Jean Morris, Treasurer. We were sorry when our housemother, Mrs. Russell, had to leave us, but were glad to have Mrs. Maynard's capable assistance for the rest of the year.

Could we ever forget the telephone and mailbox rituals, the wonderful Christmas party that Mr. and Mrs. Lee gave us, and the basketball game when pajamas became the uniform. All these and many more occasions brought out such spirit that only Goddard could produce and only Goddard will remember.



First Row, Left to Right: Jane Land, Phyllis Cramer, Georgeanna Rawley, Susan Casey, Judith Willis, Evelyn Hopkins, Judith Kelley, Reva Consove, Judith Austin, Sara Dowling, Margo Yerrington, Janet Hosker, Betsy Gilcreast.

Second Row: June Kinch, Dee Kidder, Sheila Nunan, Carol Oldenbrook, Judy Arnold, Pat Talbot, Mrs. Hill, Miss Moore, Elaine Israel, Nancy Weisser, Marjorie Pearce, Mary Hutchins, Mary Hixon.

Third Row: Mary Jo Adams, Priscilla Robinson, Roberta Roderick, Nancy Hoover, Judith Drake, Nancy Gamage, Barbara Dimock, Leatrice Dobbins, Adele Gang, Chips Wayner, Jane Newell, Mary McKinney, Barbara Wadsworth, Gail Staggenborg, Sandra Goldstone, Rolinda Durgin, Sheila Freshman, Audrey Welch, Berenice Wyer.

Fourth Row: Marty Hopkins, Donna Beshara, Patricia Tyson, Margaret Hood, Jodie Stackpole, Donna Wallace, Marilyn Pedlikin, Judith Dellicher, Sally Nilsson, Toni Henderson, Judy Butterfield, Karen Jarratt, Marion Hastings, Roberta Clements, Margaret Doane, Barbara Salo, Elaine Whitmore, Sabra Fullerton, Laurie Embon, Janet Dennison.

HERSEY HALL

Hersey Hall welcomed a warm and friendly group of girls in September. Our housemothers for the past year were Mrs. Hill and Miss Moore. They have done an excellent job in guiding us through our first year at Westbrook. Officers were elected by the dorm and include: Judy Arnold, President; Nancy Weisser, Vice President; Pat Talbot, Treasurer; and Elaine Israel, Secretary. We were proud to have Gail Staggenborg, our Student Council Representative, elected as Secretary of the Student Council.

Hersey girls would like to wish success to next year's Hersey members, and hope that they will gain equal happiness from their dormitory life at Westbrook Junior College.



First Row, Left to Right: Sandra Moody, Judy Bice.

Second Row, Left to Right: JoAnn Swett, Nancy Livingstone, Lois Forsberg, Joan Chase, Elmira Robinson.

Third Row, Left to Right: Alice Worth, Ellie Burke, Elin Bibber, Paula Brawn, Gretchen Kramer.

HOUGHTON HALL

"Anyone for hot chocolate! How about a snack before we go to bed?" These and other similar calls are common at Houghton Hall. Our wonderful home away from home has some friendly and very capable officers: They are: Gerry Michaud, President; Ellie Burk, Vice President; Elmira Robinson, Secretary; and Kathy Lewis, Treasurer.

We all love the dorm and our wonderful "Mom" Johnson, who is always ready and willing to help us with our problems and duties.

All in all, we have a terrific place to live in and a home that we'll always remember with fond memories.



First Row, Left to Right: Isabel Elias, Christine Baker, Sue Resnisky.
Second Row: Jeanne Bosang, Carol Snow, Lee MacInnis, Oral Normadin, Jane Potter, Elgieann Stafford, Mrs. Merrill, Sally Wakeman, Judith Hobbs, Mary Ellen Shanley, Judith Alcott.
Third Row: Barbara Cowan, Gail Parks, Nancy Clark, Marie Ross, Beverly MacDonald, Beverly Bissonette, Linda Macdonald, Nancy Rickard, Patricia Ostaski, Nancy Dunnell, Judy Wilkinson, Jeanne Allen, Molly Emerson.

PROCTOR HALL

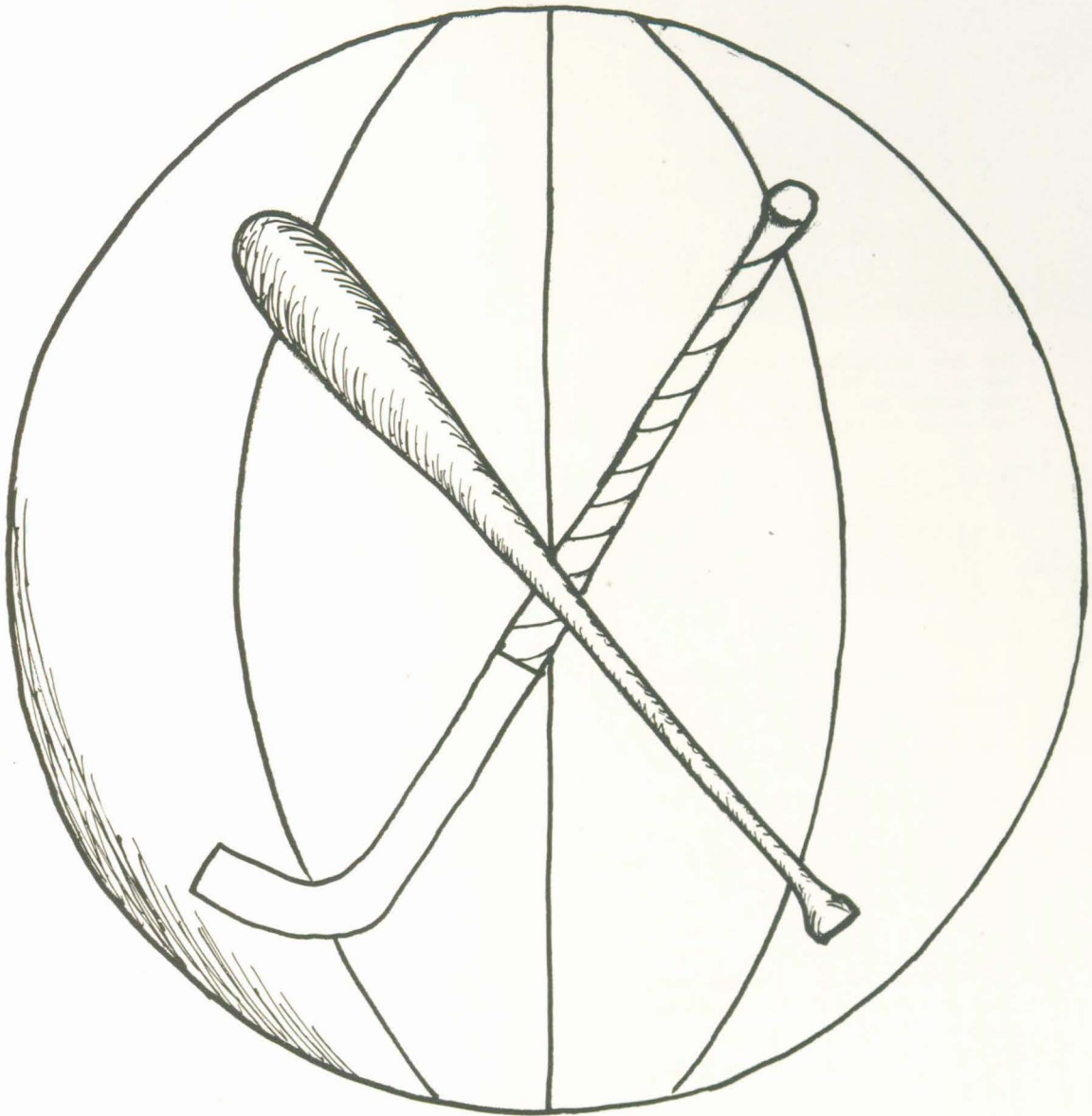
The members of the freshman class who have been residing in Proctor this year have had the opportunity of becoming well-acquainted with those seniors who are also in the dorm this year. This arrangement has been interesting and satisfactory, and many are the good times we have had during the year.

Of special interest have been the frequent informal sessions in the smoker, the wonderful spontaneous parties, the hectic activity on date nights—late nights, and the participation of the whole dorm in such activities as interhouse sports and interhouse competition during the big weekends.

Mrs. Merrill has been more than a "housemother" during this, our first year away from home. She has been a patient and an interested friend, and a person to whom we could turn with confidence for aid and advice. We'll never forget her.

To our senior "dorm-mates" and to Mrs. Merrill, we say "Thanks for the memories".

Maroon and Grey will
always be faithful...





First Row, Left to Right: Elizabeth Bailey, Sandra Brown, Kathleen Lewis, Sandra Nottage, Patricia Robinson, Janice Benoit.

Second Row: Mrs. Lee, Beatrice Hueston, Patricia Corbett, Patience Webster, Margaret Phillips, Nancy Dunnell, Cynthia Faunce, Suzanne Field, Ann Hayden, Anne Embon, Natalie Wilson, Miss Moore.

WOMEN'S ATHLETIC ASSOCIATION

The Women's Athletic Association is comprised of a council elected by the student body. The officers of the W.A.A. are elected and announced at the Annual Spring Athletic Banquet. The officers this year include: Kathy Lewis, President; Sandra Nottage, Vice President; Pat Rubinger, Treasurer; Kay Jarrett, Secretary.

The purpose of the council is to work with the Physical Education Department and conduct all tournaments, games, intramural and varsity activities. Throughout the year the council sponsors skating parties, interhouse basketball, volleyball, badminton, ping-pong and tennis. The varsity teams include field hockey, basketball, softball, and tennis.

The Winter Carnival Weekend is handled by the Executive Board of the W.A.A. and always promises to be one of the most exciting weekends of the year. The theme this year was Winter Around the World. The highlights of this wonderful weekend are a formal dance, house competition in snow sculptures and ice skits, alumnae basketball, a trip to Pleasant Mountain for ski enthusiasts and a sock hop. This year the Carnival Weekend was dedicated to Dr. Milton D. Proctor.

The council deserves congratulations for a wonderfully successful year and a great contribution to the student life here at Westbrook.

VARSITY HOCKEY



First Row, Left to Right: Nancy Weisser, Anne Embon, Kathleen Lewis, Joan Moran, Betty Willard, Sandra Brown.

Second Row, Left to Right: Cynthia Faunce, Joan Chase, Paula Brown, Karen Jarratt, Roberta Clements, Margaret Phillips, Elizabeth Bailey, Miss Barbara Moore.

JUNIOR VARSITY



First Row, Left to Right: Polly Peterson, Joanne Mayer, Marilyn Weeks, Christine Baker.

Second Row, Left to Right: Cindy Faunce, Dee Kidder, Sally Gibson, Gail Murphy, Frances Vallario, Elizabeth Scotten, Connie Forbes, Nancy Davis, Miss Barbara Moore.

VARSITY BASKETBALL



First Row, Left to Right: Pat Robinson, Frances Dunning, Margaret Phillips, Suzanne Field, Betty Bailey, Ann Hayden.
Second Row: Pat Webster, Pat Corbett, Nancy Livingstone, Ann Fox, Peggy Hebert, Barbara Fraser, Pat Calkin, Miss Moore.

JUNIOR VARSITY



First Row, Left to Right: Jane Newall.
Second Row: Pat Webster, Joan Chase, Judith Drake, Sandra Nottage, Judith Dellercher, Toni Henderson, Judith Hall, Deborah Tibbetts, Phillis Cramer, Connie Baker, Miss Moore.



First Row, Left to Right: Martha Gilson, Betty Bailey, Pat Corbett, Pat Robinson, Polly Peterson.
Second Row: Frances Vallario, Janine Cloutier, Margaret Phillips, Sally Gibson.

INTERHOUSE SPORTS





WINTER SPORTS ACTIVITIES



*Never forget the fun
that we have shared here....*





First Row, Left to Right: Susan Miles, Gail Staggenborg, Dean Bond, Janice Stevenson, Barbara McDonnell, Carol Enos, Nancy Davis.
Second Row: Bette Packard, Nancy Frail, Deborah Tibbetts, Patricia Pym, Jeanne Allen.

STUDENT COUNCIL

The Student Council at Westbrook Junior College consists of elected representatives from each dormitory. The Council helps set standards, acts in advisory capacity to the administration and assists in activities and traditions for the betterment of the college.

This year, as in the past, the Student Council sponsored the Family Weekend in October, and also the annual Faculty Auction of Services.

Officers of the Student Council include: Janice Stevenson, President; Barbara McDonnell, Vice President-Treasurer; and Gail Staggenborg, Secretary. Advisor to the Council is Dean Bond.



First Row, Left to Right: Joanne Mayer, Kathy Lewis, Betty Willard, Dean Richard Bond, Geraldine Michaud, Janice Stevenson, Suzanne Field, Stacia Eraklis.
Second Row, Left to Right: Mary Beth Shortall, Cynthia Narusis, Jewitt Voorhis, Romaine Emilio, Ruth Chadwick, Ann Hayden.

JUNIOR DEANS

In life there is one aim—to reach our goal. Here at Westbrook that goal is often the honor of being selected a Junior Dean. Throughout the year the Junior Deans contribute to the school both academically and socially. A group with a friendly spirit and a devotion to a wonderful school comprise the girls who are distinguished by the title of Westbrook's Junior Deans.

Under the capable guidance of Gerry Michaud, President; Kathy Lewis, Vice President; Sue Field, Secretary; and Joanne Mayer, Treasurer, they sponsored an outstanding lecture series. The series was tentatively scheduled to have included Daniel Nagrin, dancer; Eric Newton, critic; E. E. Cummings, poet; and Richard Dyer Bennett, folk singer.

Earlier in the year the Junior Deans met the incoming freshman class and helped them to get settled for a busy year at Westbrook. Next year's Junior Deans will be chosen from this class. The selection will take place at the traditional tapping ceremony held during May Weekend.



First Row, Left to Right: Emelie Margeson, Lisa Collins, Oral Normandin, Barbara Zucker, Ann Corbridge, Jean Wilkinson, Barbara Ernst, Carol Wynot, Barbara Cowan, Dorothy Puffer, Sally Gibson.
Second Row: Shirley Holmes, Frances Vallario, Dee Kidder, Deborah Jessop, Louise Walker, June Kinch, Doris Peterson, Carol Snow, Patricia Talbot, Polly Peterson, Nancy Doran.
Third Row: Mr. Garniss, Phyllis George, Joan Horsey, Phyllis Cramer, Carol Oldenbrook, Reva Consove, Audrey Welch, Mary Hixon, Laurie Embon, Gail Staggenborg, Joanne Mayer, Barbara McDonnell, Tyra Findell, Nancy Davis, Marilyn Weeks, Janice Benoit, Mr. MacFarlan.
Fourth Row: Nancy Frail, Meredith West, Martha Modlich, Ellen Graham, Betty Bailey, Jodie Stackpole, Cynthia Narusis, Judy Butterfield, Nancy Donnell, Judith Delliicher, Judy Wilinon, Jean Perry, Frances Dunning, Mary Ellen Ruddy, Betty French, Romaine Emilio.

INTERNATIONAL RELATIONS CLUB

The International Relations Club started off a busy year by sponsoring several activities on campus on United Nations Day. The program was highlighted by a panel discussion by several foreign exchange students from Bowdoin. Dr. Proctor accepted a check from the club to be used to provide food and clothing for Korean orphans.

The group, under the leadership of Deborah Jessop, President; June Kinch, Vice President; Doris Peterson, Treasurer; Carole Snow, Recording Secretary; Louise Walker, Corresponding Secretary, also conducted the IRC's annual High School Forum. The delegates from surrounding high schools discussed the timely subject, "the United States in the world of tomorrow."

Giving the club an immeasurable amount of their time and help this year were Mr. W. Gregor McFarlan and Mr. Bradford Garniss.



First Row, Left to Right: Miss Greta Kerr, Joan Horsey, Bette Packard, Deborah Jessop, Jewitt Voorhis, Judith Butterfield.
Second Row, Left to Right: Carole Kates, Ellen Graham, Reva Consove, Christine Baker, Gail Staggenborg, Rosamond Slack, Sandra Branson, Louise Walker, Cindy Faunce, Diane Wetmore, Marjorie Pedlikin, Donna Beshara, Leatrice Dobbins.

THE MARGRAY

The goal of the MARGRAY staff this year was to make the paper more like a college newspaper than it has been in the past. They succeeded in doing this with less gossip and more news of interest to the students. One of the new features this year was the "Room of the Month". The most unusual room on campus was selected and featured each month.

The MARGRAY sponsored the **Glamour Magazine** contest. The best-dressed freshman will be sent to New York in the fall as our representative to **Glamour's** Ten Best-Dressed College Girl's Contest. A dance was also held to raise funds for a banquet for the entire staff in the spring.

The MARGRAY staff consisted of: Deborah Jessop, Editor-in-Chief; Bette Packard, Business and Advertising Manager; Jewett Voorhis, Feature Editor; Dorothy Puffer, News Editor; Joan Horsey, Sports Editor; Reva Consove, Exchange and Distribution Editor; and Judith Butterfield, Art Editor. Assisting the editors were: Sandra Branson, Cynthia Faunce, Carole Kates, Gail Staggenborg, Marilyn Pedlikin, Christine Baker, Diane Wetmore, Donna Beshara, Louise Walker and Beatrice Dobbins. Advisor for the paper was Miss Greta Kerr.



THE TOWER

EDITOR-IN-CHIEFJoan Horsey
COPY EDITORStacia Eraklis
ART EDITORJean Santilhano
ASSISTANT ART EDITORJudy Whitehead
PHOTOGRAPHY EDITORCarol Finley
PHOTOGRAPHERRosamond Slack



First Row, Left to Right: Frances Vallario, Deborah Willis, Patricia Robinson, Janine Cloutier, Jean Santilhano, Rosamond Slack, Joan Horsey, Stacia Eraklis, Judith Whitehead, Shirley Holmes.
Second Row, Left to Right: Mr. David Smith, Barbara McDonnell, Marjorie Reid, Natalie Wilson, Dorothy Puffer, Janice Benoit, Nancy Davis, Marilyn Weeks, Sally Gibson, Polly Peterson.
Third Row, Left to Right: Mary Montovani, Tyra Dindell, Carol Frost, Barbara Saulsbury, Margo Ellis, Jewitt Voorhis, Dorothy Semer, Cynthia Narusis, Jean Perry, Romaine Emilio, Frances Dunning, Patricia Collins, Joanne Mayer, Judith Makin.

THE TOWER

The theme of your yearbook is THESE ARE THE DAYS. The TOWER staff has been working since September to present these days so that you may relive them now and in the years to come. We hope that we have been successful in recreating your college life at Westbrook.

We would like to express our deep appreciation to Mr. David Smith, the TOWER'S advisor, who has given us so much of his time.

The TOWER Staff



First Row, Left to Right: Anna Chandler, Carol Chapman, Nancy Doran, Roberta Clements, Bette Packard, Stacia Eraklis, Sheila Nunan, Reva Consove, Janice Direnzo, Barbara Ernst, Martha Pratt.
Second Row, Left to Right: Mr. Carlyle Lewis, Patricia Calkin, Dawna Oppedisano, Barbara Fraser, Judy Arnold, Sabra Fullerton, Andrea Stevens, Judy Kelley, Shirley Holmes, Marilyn Downes, Barbara Parnin, Janet Moberger, Judy Whitehead, Pat Collins, Mr. John Gordon, Mr. Edward Hooghkirk.
Third Row, Left to Right: Ellen Klev, Fran Dunning, Marilyn Brown, Gail Staggenborg, Betsy McKinnon, Cindy Nariusis, Nancy McClellan, Peggy Hebert, Alvera Donatelle, Anne Aube, Ann Sherman, Jane Thompson, Marilyn Davidson, Barbara O'Leary, Janice Stevenson.

SCIENCE CLUB

The Science Club can proudly boast of being one of the largest and most active clubs on campus.

The club, headed by Stacia Eraklis, President; Sheila Nunan, Vice President; Bette Packard, Treasurer; and Roberta Clements, Secretary, sponsored many educational and enjoyable activities throughout the year. Movies were shown and some of Portland's leading doctors spoke at the meetings. The Science Club dance, "Farm Frolic", met with great success.

Highlighting the club's activities was the annual Boston trip. The club's biggest project of the year was the Science Fair held during May Weekend. This year the professional skill shown by the girls in their unique displays produced a particularly fascinating Fair.

Mr. Edward Hooghkirk, Mr. John Gordon, and Mr. Carlyle Lewis acted ably as club advisors.



First Row, Left to Right: Barbara Zucker, Jean Wilkinson, Elgianne Stafford, Jane Potter, Marthabelle Chase, Judith Forbes, Ann Corbridge.

Second Row: Connie Forbes, Doris Gould, Jean McCullough, Kay Jarratt, Mary Beth Shortall, Rachel Nowell, Mary Montovani, Mary Whitworth, Ellen Graham, Ann Richmond, Marion Simpson.

Third Row: Carole Prato, Margo Yerrington, Nancy Weisser, Susan Shattuck, Carol Teague, Dorothy Semer, Carol Frost, Betty Willard, Judith Makin, Elizabeth Rolfe, JoAnn Greeley, Judy Austin, Sara Dowling.

THE RETAILING CLUB



The Retailing Club consists of those girls who will be going into the business world and using the various opportunities which Retailing offers.

The club sponsored their annual "Retailer's Rag" which was a great success and provided an evening of dancing for all. Mr. Lawrence Ward of Ward Brothers in Lewiston, Maine, spoke to the club on the latest fashion trends. Some of the girls modeled for him, showing the fashions for 1957-58. Some of the Retailer's pictures appeared in the Fashion Section of the **Portland Press Herald** modeling their own high fashions of the year.

The officers elected for the past year were: Mary Montovani, President; Rachel Nowell, Vice President; Mary Whitworth, Secretary-Treasurer; and Mary Beth Shorthall, Social Chairman. The club's advisor is Miss Constance Curry.



First Row, Left to Right: Deborah Willis, Barbara Parnin, Barbara Cowan, Sara Dowling, Carol Oldenbrook, Anna Chandler, Lee MacInnis, Oral Normandin, Jane Potter.

Second Row: Connie Forbes, Carol Prato, Mr. Murray, Judy Wilinon, Andrea Stevens, Patricia Ostaski, Jean McCullough, Karen Jarratt, Linda Oak, Marilyn Brown, Diane Wetmore, Donna Wallace, Beverly Bissonette, Jeanne Bosang, Janet Moberger, Judith Austin, Nancy Weisser.

MASQUE AND CANDLE

The Masque and Candle, under the direction of Mr. Clapham Murray, enjoyed another very successful year. With the arrival of the new freshman class there was an increase in the club's membership.

Officers of the club were: Carol Frost, President; Mary Alice Chandler, Vice President; and Polly Peterson, Secretary-Treasurer.

To start the year Masque and Candle members presented "The Ivory Door" by A. A. Milne. With the arrival of Christmas the Masque and Candle presented the annual Christmas Play, a reading of "Amahl and the Night Visitors". In March, school spirit was gathered together for the Freshman-Senior Competition Plays. The Spring Play, the biggest production of the dramatic club, was a big success.

The senior members of the Masque and Candle sincerely hope that the classes following us will enjoy their work on stage as thoroughly as we have.



First Row, Left to Right: Dorothy Puffer, Loretta Foster, Carol Frost, Marjorie Abbott.
Second Row, Left to Right: Mary Mantovani, Judith Makin, Elizabeth Willard, Tyra Findell, Sally Wakeman, Christine Baker.

STUDENT RELIGIOUS ASSOCIATION

The Student Religious Association sponsored the Christmas party for the underprivileged children of Portland. This party proved to be a big success and enabled these children to have a Christmas which they might not have had otherwise. This year, as in the past, the S.R.A. was in charge of the weekly convocation services.

The officers of the Student Religious Association for this year were: Betty Willard, President; Tyra Findell, Vice President; Chris Baker, Secretary-Treasurer; and Marjorie Abbott, Social Chairman. The club wishes to thank Mr. Myron Hager for his faithful service and guidance.



First Row, Left to Right: Reva Consove, Betsy McKinney, Jody Stackpole, Ann Richmond, Sandra Goldstone, Barbara Wadsworth, Dee Kidder.
Second Row, Left to Right: Linda Macdonald, Patricia Ostaski, Pat Mears, Marty Hopkins, Miss Moore, Mrs. Selberg, Nat Wilson, Ann Hayden, Toni Henderson.

CANTER CLUB

The officers of the 1957-58 Canter Club were: President, Nat Wilson; Vice President, Marty Hopkins; Secretary, Dee Kidder; Treasurer, Ann Hayden; and Ride Chairman, Pat Mears.

The Club's instructor is Mrs. Philip Selberg. Faculty Advisor is Miss Barbara Moore.

Each month Marty Hopkins wrote an article about the Canter Club Activities which appeared in the **National Horsemen Magazine**.

The Club's activities began in October with the annual trip to Howard's Western Store in Yarmouth. Several breakfast and supper rides were held at the stable during the fall and spring months. The new indoor ring at the Tally-Ho Stable made it possible for riding all winter. At an open meeting in February, Mrs. Selberg showed several films of horse shows and trail rides. The Club's biggest project was the horse show, which was held during May Weekend.



First Row, Left to Right: Jay Wanzer, Sue Shattuck, Jan Benoit, Judy Forbes, Nancy Frail.
Second Row, Left to Right: Patsy Murdock, Vivian Day, Noreen Fitzgerald, Judy Voorhis, Mrs. Lee, Miss Moore, Dorothy Cobb, Carol Enos, Kathy Lewis.

OUTING CLUB

Many pleasant weekends were spent on the slopes of Mt. Pleasant due to the time and effort of the Outing Club. Every farm weekend, from the "Clean-up" days in September to the "Close-up" days in June, is organized by this club. Various sports movies were shown at the monthly meetings for the benefit of the club. In February, the Outing Club joined with the W.A.A. to sponsor "Around The World", Westbrook's Winter Carnival.

Officers of the club were: Janice Benoit, President; Susan Shattuck, Vice President; Judy Forbes, Secretary; Nancy Frail, Treasurer; Judith Wanzer, Trip Leader; Patricia Murdock, Publicity Chairman. Advisors for the club were: Mrs. Lee and Miss Moore.



First Row, Left to Right: Miss Priscilla Riley, Alice Worth, Dyla Greenlaw, Marie Ross, Debbie Willis, Betty Bailey, Beth Galloway, Lynn Garrett, Phyllis Cramer, Janet Hosker, Joan Chase, Judy Alcott, Judy Willis, Mr. Bryant.

Second Row, Left to Right: Barbara Cowan, Phyllis George, Emily Margeson, Joan Horsey, Marjorie Reid, Anne Pearce, Georgianna Rawley, Jane Furbush, Sue Casey, Joan Moran, Janice Gregory, Margery Meyer, Pat Hayes, Judy Kelley.

Third Row, Left to Right: Cynthia Faunce, Sandra Goldstone, Judy Colwell, Shirley Bailey, Brenda Schwartz, Christine Baker, Nancy Davis, Marilyn Weeks, Mary Alice Chandler, Florence Spaulding, Marsha Miller, Nancy McQuade.

Fourth Row, Left to Right: Priscilla Robinson, Jean Allen, Nancy Clark, Diane Kimball, Roberta Clements, Dor Duncan, Evelyn Swanson, Elaine Israel, Barbara Salo, Vivian Day, Joanne Brackett, Rosamond Slack, Joanne Mayer.

Fifth Row, Left to Right: Judy Wilkinson, Pat Tyson, Rolinda Durgin, Alice Robinson, Eleanor Burke, Judy Delliker, Judy Butterfield, Nancy Dunnell, Dorothy Cobb, Gail Murphy, Barbara Tuller, Mary Ellen Ruddy.

GLEE CLUB

Under the competent and able direction of Mr. Marshall Bryant and the accompaniment of Miss Priscilla Riley, the Glee Club has performed in a talented and varied manner. The first performance was given at the United Nations Day ceremony. At the Twenty-fifth Anniversary presentation of the Messiah, by Bowdoin College, Westbrook participated with Pembroke and Wheaton Colleges. This same performance was given at Portland City Hall the following day. Other performances were given during the Christmas season.

The Spring concerts were given with various participating colleges and the traditional concert at May Weekend concluded the season.

The officers of the Glee Club were: Beth Galloway, President; Betty Bailey, Vice President; and Lyn Garrett, Bookkeeper.



Left to Right: Miss Priscilla Riley, Betty Bailey, Joan Horsey, Marilyn Weeks, Barbara McDonnell, Connie Forbes, Tyra Findell, Nancy Davis, JoAnn Mayer, Judith Wanzer, Barbara Tuller.

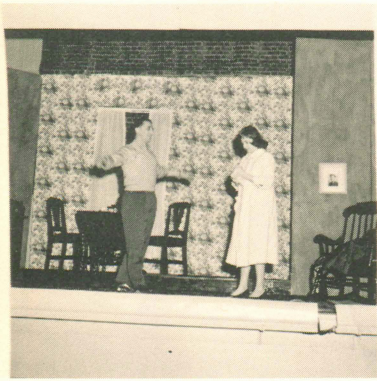
FEUX PAS

The Feux Pas are one of the newer organizations appearing on the W.J.C. campus. Under the capable leadership of Miss Priscilla Riley, these ten girls have combined their abilities to produce harmony in a variation of songs.

The Feux Pas have appeared on our campus in Convocation, talent shows, at the Winter Carnival Dance, and May Weekend. Off campus activities included: the University of Maine in Portland, W.J.C. Alumnae in Portland and Manchester, New Hampshire, Woodfords Congregational Church, the Portland Library, and singing with the University of New Hampshire Glee Club.

This group was started in 1957 by five girls and it is hoped that their work will be carried on and in the years to come will be considered a part of the Westbrook tradition.

FACULTY OFF GUARD



Here's to plays, the parties, and the picnics.



PARENTS' WEEKEND



CHRISTMAS WEEKEND



WINTER CARNIVAL WEEKEND



MAY WEEKEND



CLASS OF 1959

- Adams, Mary Jo, 28 Stevens Rd., Melrose, Mass.
Alcott, Judith, R.F.D., Winthrop, Maine
Allen, B. Jeanne, 409 Sabattus St., Lewiston, Maine
Andrews, Patricia Jean, Fryeburg, Maine
Arnold, Judith May, Cleveland St., Norfolk, Mass.
Aube, Ann Marie, 181 Brown St., Westbrook, Maine
Austin, Judith Alma, Valley Rd., New Canaan, Conn.
Baker, Christine Louise, 825 Prospect St., West Hartford, Conn.
Baker, Constance, Route No. 2, Ellsworth, Maine
Belunes, Janet T., North Main St., Deerfield, Mass.
Beshara, Donna Marie, 23 Knox St., Lawrence, Mass.
Bibber, Elin Ruth, R.F.D. 1, South Harpswell, Maine
Bice, Judith Ann, 145 Nehoiden St., Needham, Mass.
Bisson, Peggy Ann, 9 Central St., Winthrop, Maine
Bissonette, Beverly Phyllis, 33 Montview Rd., Chelmsford, Mass.
Bosang, Jeanne Marie, 176 Rowayton Ave., Rowayton, Conn.
Brown, Esther Arline, 651 Main St., South Portland, Maine
Brown, Marilyn, Presque Isle, Maine
Brown, Nancy Ann, 12 Wallace Ave., Rutland, Vt.
Brown, Paula Kelsey, South Casco, Maine
Brown, Sandra, 83 Mussey St., South Portland, Maine
Burke, Elizabeth Ann, 8 Manley St., Augusta, Maine
Burnell, Nancy Annette, Poland Springs Rd., Gray, Maine
Burnham, Joanne Rae, 13 Morrill Ave., Gorham, Maine
Butterfield, Judith Anne, 16 Delaney Place, Tenafly, New Jersey
Casey, Susan, 1361 Pawtucket Ave., Rumford, Rhode Island
Chase, Joan Standish, 62 Prince St., West Newton, Mass.
Clark, Nancy Luetta, 78 Church St., Branford, Conn.
Clements, Roberta Allen, 40 Prospect Hill Rd., Lexington, Mass.
Clifford, Sara Jane, 28 Lawrence St., Methuen, Mass.
Consove, Reva Naomi, 33 Lafayette St., Pawtucket, Rhode Island
Coombs, Eleanor, Manchester Rd., Northeast Harbor, Maine
Cowan, Barbara Ann, 70 Spruce St., Stamford, Conn.
Cramer, Phyllis Jean, 24 Cheever St., Milton, Mass.
Cressey, Carolyn Irene, Lower Main, Gorham, Maine
Dellicher, Judith Pearson, 17 Leslie Rd., Winchester, Mass.
Dennison, Janet Beth, 174 Bellevue Ave., Melrose, Mass.
Dimock, Barbara, 4 Court St., Groton, Mass.
DiRenzo, Janice, 40 Turner St., Portland, Maine
Doane, Margaret Ruth, 78 Hilton Ave., Maplewood, New Jersey
Dobbins, Leatrice Elizabeth, Bridge Rd., Lisbon Falls, Maine
Donatelle, Alvira, 19 Melbourne St., Portland, Maine
Dowling, Sarah Jane, Collins Heights, Gilford, New Hamp.
Downes, L. Marlene, 48 Fallbrook St., Portland, Maine
Drake, Judith Louise, 341 Lebanon St., Melrose, Mass.
Dunnell, Nancy Stearns, 32 Pine St., Exeter, New Hamp.
Durgin, Rolinda, 562 Pearl St., Reading, Mass.
Dyer, Ruth Lorraine, 394 Austin St., Westbrook, Maine
Embon, Anne Lorraine, 4 Noyes Ave., Waterville, Maine
Emerson, Molly, 52 Bowdoin St., Portland, Maine
Enos, Marlene, 12 Abbott Rd., Gloucester, Mass.
Ewell, Melissa, Flagg Meadow Rd., Gorham, Maine
Fabricius, Brenda, R.F.D. No. 4, Falmouth, Maine
Forsberg, Lois Christine, 35 Nelson Rd., Melrose, Mass.
Freshman, Sheila, 140 Central Ave., Lynbrook, L. I., New York
Fullerton, Sabra Elizabeth, 81 Kingsbury St., Wellesley, Mass.
Furbush, Jane Elizabeth, R.F.D. No. 1, McGrath Pond Rd., Oakland, Maine
Gamage, Nancy Vida, South Bristol, Maine
Gang, Adele Laura, 2149 East Live Oak Drive, Los Angeles, California
Gilcreast, Betsey Cleveland, 35 Bartlett St., Andover, Mass.
Goldstone, Sandra, 25 Gerald Rd., Brighton, Mass.
Gould, Doris Elizabeth, Oak Ridge Rd., Biddeford, Maine
Gregory, Janice Rae, 10 Pleasant St., Essex Junction, Vt.
Hall, Judith, 17 Main St., Gorham, Maine
Hastings, Marion Elizabeth, 21 Orchard St., Windsor, Conn.
Hayes, Patricia Maureen, 14 South Park St., Bradford, Mass.
Henderson, Glenda Ruth, North Wilton Rd., New Canaan, Conn.
Hixon, Mary Gunn, Locke Rd., Rye, New Hamp.
Hobbs, Judith Allison, 2 King St., Woodsville, New Hamp.
Hood, Margaret Kennedy, 52 Stickney Rd., Medford, Mass.
Hoover, Nancy Jane, Helen Ave., Rye, New York
Hopkins, Evelyn Pauline, 35 Dianne Rd., West Medford, Mass.
Hopkins, Martha Lois, 8 Emery St., Peabody, Mass.
Horr, Carolyn Mary, 113 Hall St., South Portland, Maine
Hosker, Janet V., 46 Evergreen Rd., Reading, Mass.
Hutchins, Mary Betsey, 12 Somerset Rd., Lexington, Mass.
Israel, Elain Sandra, Box 487, Groveton, New Hamp.
Jarratt, Karen Marie, 122 Lincoln St., Newton Highlands, Mass.
Kelley, Judith Wilburn, 1030 Clinton Ave., Plainfield, New Jersey
Kidder, Darla Dee, Box 477, Route No. 2, Panama City, Fla.
Kinch, June Alice, 90 Oak St., Naugatuck, Conn.
Klev, Ellen, 166 Whitney Ave., Portland, Maine
Kramer, Gretchen Ellen, 26 Myrtle St., Belmont, Mass.
Lamenzo, Jean Marie, 14 Jean Rd., Manchester, Conn.
Land, Jane Roslyn, 90 Woburn St., Reading, Mass.

CLASS OF 1959

- Livingstone, Nancy, Chicopee Row, Groton, Mass.
Lloyd, Ruth, 23 Kearsarge St., North Conway, New Hamp.
MacDonald, Beverly, 105 East Pearl St., New Haven, Conn.
MacDonald, Linda C., 12 Birch Rd., South Portland, Maine
MacInnis, Elizabeth Mawson, 146 Elderwood Ave., Pelham, New York
MacQuade, Nancy, State St., Sandwich, Mass.
McClellan, Nancy Anne, 47 Stevens Ave., Portland, Maine
McCullough, Jean Louise, 156 Winchester St., Newton Highlands, Massachusetts
McKinney, Mary Elizabeth, Litchfield Rd., Londonderry, N. H.
Meyer, Marjorie Evelyn, 25 Baker Ave., Beverly, Mass.
Moberger, Janet Marion, 190 Warwick Rd., Melrose, Mass.
Moody, Sandra George, 138 California St., Ridgewood, N. J.
Moran, Joan Roberts, 5 Humphrey St., Simsbury, Conn.
Morris, Wilma Gene, Fort Fairfield, Maine
Newell, Mary Jane, Main St., Woodbury, Conn.
Nilsson, Sally Esther, 73 Nowell Rd., Melrose, Mass.
Normandin, Oral A., 35 Palomino Lane, Bedford, New Hamp.
Nottage, Sandra Pauline, Greenway Drive, Falmouth, Maine
Nowell, Rachel Cora, MRA Box 99a, Bangor, Maine
Nunan, Sheila, 54 Storer St., Saco, Maine
Oak, Linda Joyce, 68 Hillside St., Presque Isle, Maine
Oldenbrook, Carol, 39 Hampshire Rd., Reading, Mass.
Oppedisano, Dawna Marie, 13 Winthrop St., Portland, Me.
Ostaski, Patricia Ann, 27 Lincoln House Point, Swampscott, Massachusetts
Packard, Jane, 55 Andover Rd., Billerica, Mass.
Parks, Gail, 266 East State St., Presque Isle, Maine
Parnin, Barbara Ann, 38 Garrison Rd., Wellesley, Mass.
Parsons, Carole Anne, 4 Bass Ave., Gloucester, Mass.
Paton, Elizabeth Dorothea, 3004 N. E. Center Ave., Fort Lauderdale, Florida
Pearce, Marjorie Ann, 21 Chestnut St., Sharon, Mass.
Pedliken, Marilyn Gloria, 45 Taft Ave., Providence, Rhode Island
Perry, Paula Marie, 43 Whittier Rd., Reading, Mass.
Potter, Jane Remembrance, 519 Putnam Ave., Greenville, R. I.
Pratt, Martha Ann, 26 Monroe Ave., Westbrook, Maine
Pym, Patricia Marion, East St., Topsfield, Mass.
Rawley, Georgeanna, 19 Pleasant St., Putnam, Conn.
Resnisky, Sue-Anne Barbara, 16 Jude Lane, R.F.D. No. 1, Willimantic, Connecticut
Richmond, Ann Louise, 30 Belcher Rd., Wethersfield, Conn.
Rickard, Nancy A., 84 Shade St., Lexington, Mass.
Robinson, Almira Jane, Champlain Rd., Orleans, Mass.
Robinson, Priscilla Allyn, Bob White Lane, Wilton, Conn.
Roderick, Roberta Gail, 160 First Rangeway, Waterville, Maine
Romano, Rosalie C., 40 Morning St., Portland, Maine
Ross, Marie, Riverside Drive, Augusta, Maine
Roux, Claudette P., 23 Edgewood Ave., Portland, Maine
Salo, Barbara, 85 Strickland St., Manchester, Conn.
Scotten, Elizabeth, 17 Ocean House Rd., Cape Elizabeth, Maine
Shanley, Mary Ellen, 279 Wibird St., Portsmouth, New Hamp.
Sherman, Ann, 18 Brookside Lane, Portland, Maine
Simpson, Marion Edith, River Rd., Brunswick, Maine
Snow, Carole Ardelle, 35 Rock Ave., Swampscott, Mass.
Snyder, JoEllen Louise, 13 Green Ave., Northampton, Mass.
Sonken, Rhoda Edith, 53 Park Lane, Rockville Centre, N. Y.
Stackpole, Jodette Elaine, 89 Gilbert St., North Brookfield, Massachusetts
Stafford, Elgieann Deloria, Box 212, Laconia, New Hamp.
Staggenborg, Judith Gail, 21 Coleman Terrace, Tenafly, N. J.
Stevens, Andrea Lee, 26 Birch Rd., Auburn, Maine
Strout, Janice, 8 LaHave St., South Portland, Maine
Sullo, Linda Ruthe, 19 Bernard Rd., Wellesley, Mass.
Swanson, Evelyn Ruth, 35 Kings Terrace, West Springfield, Massachusetts
Sweetser, Carol Prince, 29 Richardson St., Portland, Maine
Swett, Jo-Ann Beverly, 1033 Walnut St., Newton Highlands, Massachusetts
Talbot, Patricia Ann, 6 Cedar St., Wenham, Mass.
Tibbetts, Deborah Jean, 12 Bradeen St., Springvale, Maine
Tyson, Patricia Ann, Box 153, Hampton, New Hamp.
Wadsworth, Barbara Louise, Stetson Ave., R.F.D., Duxbury, Massachusetts
Waite, Marilyn Maxine, North Leeds, Maine
Wallace, Donna Almeda, R.F.D. No. 3, Skowhegan, Maine
Wayner, Lois Gail, 59 Baxter Rd., Brookline, Mass.
Weisser, Nancy Alma, 286 Old Broadway, Hastings-on-Hudson, New York
Welch, Audrey Ellen, 7 Wilson Ave., Dedham, Mass.
Wentworth, Elizabeth Rollins, 263 Brackett St., Portland, Maine
Whitmore, Elaine Hilda, Route 130, Forestdale, Mass.
Wilkinson, Judith Elaine, 99 Summer Ave., Reading, Mass.
Williamson, Maurine Judith, 57 Glenwood Ave., Portland, Me.
Willis, Judith Ann, 5 Bell St., Belfast, Maine
Worth, Alice A., 18 Durant Ave., Dedham, Mass.
Wright, Sue Ann, 215 Madison Ave., Skowhegan, Maine
Wyer, Berenice, R.F.D. No. 1, Rexford, New York
Yerrington, Margo Helene, 114 Grove St., Putnam, Conn.

When we go forth leaving our
Campus, as part of the Westbrook Way. »







