

1943

Tower 1943

UNE Library Services Westbrook College History Collection
University of New England, Maine, rgray@une.edu

Follow this and additional works at: http://dune.une.edu/wchc_yearbooks

 Part of the [Cultural History Commons](#), [Social History Commons](#), [Women's History Commons](#), and the [Women's Studies Commons](#)

Preferred Citation

Westbrook College History Collection, UNE Library Services, "Tower 1943" (1943). *Yearbooks*. 6.
http://dune.une.edu/wchc_yearbooks/6

This Book is brought to you for free and open access by the Westbrook College History Collection at DUNE: DigitalUNE. It has been accepted for inclusion in Yearbooks by an authorized administrator of DUNE: DigitalUNE. For more information, please contact bkenyon@une.edu.

WESTBROOK COLLEGE LIBRARY

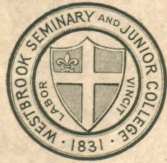
COLLEGE LIBRARY

The Tower



1943

LIBRARY OF
WESTBROOK
JUNIOR COLLEGE



PORTLAND, MAINE

WESTBROOK JUNIOR
COLLEGE LIBRARY

Ex Libris



378
W52

1943

~~7889~~

WESTBROOK JUNIOR
COLLEGE LIBRARY

The Tower

1943

Published by

The Seniors

of

Westbrook Junior College

Portland, Maine



Non-Circulating Copy



MISS PAULINE G. CARTER

Dedication

The quiet distinction of your grace has revealed to us the inherent charm of the human spirit. This love has enshrined you in our hearts. To you

MISS PAULINE G. CARTER

We, the Class of 1943
dedicate

THE TOWER



DOCTOR MILTON D. PROCTOR, President



DEAN ELSBETH MELVILLE
Dean of the College



DEAN ELISABETH G. KIMBALL
Academic Dean

WESTBROOK JUNIOR
COLLEGE LIBRARY

OFFICERS OF ADMINISTRATION

MILTON D. PROCTOR, PH. D.
President

ELSBETH MELVILLE, A. M.
Dean of the College

ELISABETH G. KIMBALL, PH. D.
Academic Dean

JULIA C. PRATT
Assistant to the President

PAULINE G. CARTER, A. B.
Assistant to the Dean of the College

M. ELYNED ROBERTS, A. M.
Librarian

MARY BELLE BUTTS
House Director and Dietitian

KATHRYN BUTTERFIELD
Bursar

STAFF OFFICERS

DEFOREST WEEKS, M. D. *College Physician*
ALBERT W. MOULTON, M. D. *Consulting Eye Specialist*
ALVAH C. THOMPSON, D. D. S. *Consulting Dentist*
JOAN FITZGERALD, R. N. *College Nurse*
MARJORIE E. CHASE *College Nurse*
HAZEL E. LUNDY, A. B. *Manager of the College Store*
MARION M. PROCTOR *Secretary to the House Director*
MARYROSE JORDAN, B. S. *Assistant to the Dietitian*
KATHERINE P. CLARK *Secretary to the Deans*
EARL S. WILLIAMSON *Superintendent of Buildings and Grounds*



CHAIRMEN OF DEPARTMENTS

Back row, left to right: Mr. Donald Hayden, Mr. Rupert Neily, Mr. Stephen V. Worthen.

Front row, left to right: Dean Elisabeth G. Kimball, Dean Elsbeth Melville, Miss Janet Smith.

FACULTY

1942 - 1943

MILTON D. PROCTOR, PH. D.

President

(Arranged in order of Appointment)

- | | |
|---|--|
| DEBORAH N. MORTON, L. A.
<i>Instructor Emeritus</i> | LENA F. FULLER, A. B.
<i>History of Art</i> |
| ELSBETH MELVILLE, A. M.
<i>Latin</i> | PHYLLIS McCANN, A. B.
<i>Speech, Dramatics</i> |
| RUPERT NEILY
<i>Director of Music, Voice</i> | DOROTHY E. WOLSTENHOLME, B. S.
<i>Secretarial Science</i> |
| ANNE NEILY
<i>Piano</i> | CHARITY ELLEN CANNON, PH. D.
<i>Spanish, French</i> |
| M. LUCILLE KIDDER, A. M.
<i>Arts and Crafts</i> | ELIZABETH CARPENTER, A. M.
<i>Science</i> |
| STEPHEN R. DEANE, A. M.
<i>Psychology, History, Philosophy</i> | CHARLOTTE R. DOLLOFF, A. B.
<i>Science</i> |
| BENJAMIN B. HERSEY, B. S., S. T. B.
<i>Chaplain</i> | DONALD E. HAYDEN, A. M.
<i>English</i> |
| PAULINE G. CARTER, A. B.
<i>Mathematics</i> | ELIZABETH F. HONAN, B. S.
<i>Secretarial Science</i> |
| ELISABETH G. KIMBALL, PH. D.
<i>History</i> | MARYROSE JORDAN, B. S.
<i>Homemaking</i> |
| JEAN PROCTOR, B. S.
<i>Homemaking</i> | JEANNE I. MORNEAULT, A. B.
<i>Secretarial Science</i> |
| JANET SMITH, A. B., B. S.
<i>Head of Department of Secretarial
Science</i> | PATTY SMYTH, B. S.
<i>Physical Education, Hygiene</i> |
| DORIS P. BEAN, B. S.
<i>Secretarial Science</i> | RUTH EILEEN STEVENS, A. B.
<i>German</i> |
| MARGUERITE M. SHAW, A. B.
<i>Speech, Physical Education</i> | CATHERINE M. WARD, A. M.
<i>French, Spanish</i> |
| ELEANOR M. WILLIAMS, L. L. B.
<i>Journalism, English, Director of News
Service</i> | EDWIN YOUNG, A. M.
<i>Social Science</i> |
| STEPHEN V. WORTHEN, A. M.
<i>Science</i> | MARY E. WOOD, A. M.
<i>Science</i> |
| PHYLLIS REED, A. M.
<i>Music</i> | MARJORIE E. CHASE
<i>Office Nursing</i> |
| DONALD C. FULLER, D. ED.
<i>Secretarial Science</i> | M. ELYNED ROBERTS, A. M.
<i>English</i> |
| | HARRISON LAKIN
<i>Current International Affairs
Visiting Lecturer</i> |



Standing, left to right: Elizabeth Cooper, Alva Farrow, Alexandria Williams.
 Seated, left to right: Jane Marshall, Ann Hamel, Joanne Jordan, Jean O'Brien.

TOWER BOARD

Literary Editor JEAN OBRION
Assistant ELIZABETH COOPER
Art Editor JANE MARSHALL
Assistant ALVA FARROW
Business Manager JOANNE JORDAN
Assistant ALEXANDRIA WILLIAMS
Circulation Manager ANN HAMEL
Assistant KATHRYN WOODBURY

STAFF

SHIRLEY BARKER
 FLORA DAVIS
 VIRGINIA GAMWELL
 JEAN JORDAN

ROBERTA MACLEAN
 ALICE MCGINTY
 JANE MARSHALL
 OLIVE MOODY

LOUISE PARKER
 BRENDA PATTISON
 IDA MAE PEVERLY
 NANCY PRICE

ADVISER

MISS ELEANOR M. WILLIAMS





SENIOR CLASS OFFICERS

Back row, left to right: Nancy Murphy, Louise Frost, Barbara Robinson, Betsey King, Jane Marshall.

Front row, left to right: Constance Brown, Anne Stanley, Joan Cleveland.

Senior Class History

It all began in September, 1941. Now we have lived and played and studied together for two years. It is almost all over. There are many days we shall never forget.

Orientation Week was our first at Westbrook. We lived through registration, class cards, and placement tests, comforted and guided by our Senior Big Sisters. The President's Tea was our first social event. Later we attended the Freshman Reception and the Freshman Tea Dance. Our social life started there!

Before we knew it, Freshman Week was upon us. We will never forget "On land, on sea, and in the air . . ." or our "Bundles for Britain."

Later we learned the difference between the Dean's List and the Honor Roll, and filled ourselves with good intentions.

The Christmas Ball in the Eastland Hotel was our first taste of the college formals we had read about in books. More fun followed with the Coronation Ball and the Winter Carnival.

Midyears brought us back to the real business of going to college. It was quite an experience. Later, many of us took part in the Cotton Ball and the May Pageant.

During Commencement Week, we tried to imagine what we would be thinking of the next year. We needn't have, for it came to us in reality soon enough.

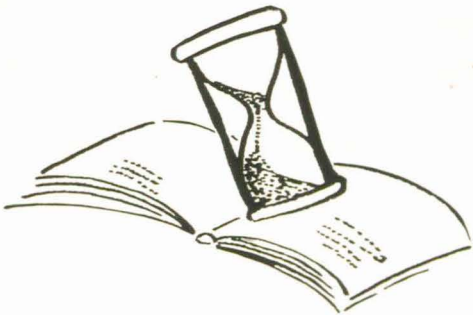
Last September we returned to Westbrook. Suddenly, we realized that now we were the Seniors.

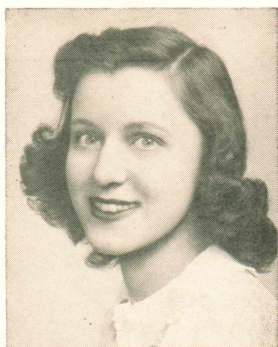
Before our five weeks' Christmas vacation we had our Christmas Formal. Those of us who went enjoyed it; but, many of us stayed home that night to write to our servicemen.

The Winter Carnival was a high spot. The entire student body entered into the outdoor fun of skating on campus, creating snow sculpture, and participating in the events at Tomlinson's Riding School. The Cottage won the snow statue prize with its realistic Army tank. Janet Smith was our Winter Carnival Queen at the Coronation Ball in the new armory.

The rest of the college year flew by. Before we knew it, May came and we were busy taking our finals and doing everything we could to make our last weeks at Westbrook the happiest. We're sorry for only one thing — that those two wonderful years couldn't have lasted longer.

S
E
N
I
O
R
S





ROBERTA JANET ANDERSON

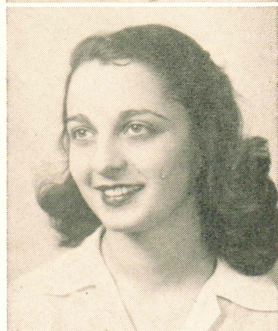
Bobby

Secretarial Science

Portland, Maine

Secretarial Science Club, 1; Masque and Candle, 3.

versatile, studious, fun-loving, ambitious, loyal



PENELOPE JANE ANTON

Penny

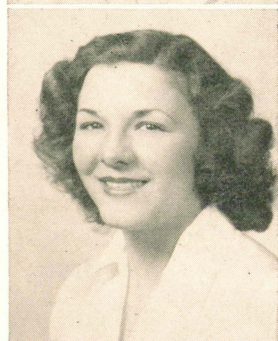
Pre-Medical Technique

Waterbury, Connecticut

Yale Medical School

Committee Work, 1; Head Usher M. I. T. Concert, 1; Red Cross Work, 2.

exotic, "Annapolis Bound", nervous wreck, music



MARION ANITA BARKER

Mimi

Medical Secretary

Portland, Maine

Secretarial Club, 1, 2; W. A. A., 1, 2.

ambitious, friendly, studious, ice cream, fiend, vivacious



PHYLLIS ELLEN BARKER

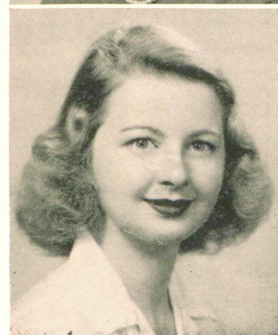
Phyl

Medical Secretary

Needham, Massachusetts

Committee Victory Assembly, 1; Committee Christmas Formal, 1; Co-Chairman Cotton Ball, 1; International Relations Club, 1; Usher Commencement Dance, 1; Freshman Reception, 2; Bookweek, 2; Committee Barn Dance, 2; Secretarial Science Club, 2.

sparkle, "Tuck" and more "Tuck", sincere, Anniversary Waltz, giggle



JEAN BATSON

Sbarpie

Junior College General

Lynn, Massachusetts

Riding Club, 1, 2; Horse Show, 1, 2; Drill Team, 1; Glee Club, 1; Welcoming Committee, 2; Winter Carnival Committee, 2; House Committee, 2; Freshman Picnic Committee, 2; Masque and Candle, 2.

horses, orchids, congenial, understanding, refreshing

LOIS FLORENCE BERLEPSCH

Lo

Junior College General East Hartford, Connecticut

W. A. A., 1; Skiing, 1; Freshman Welcoming Committee, 2; Usher
Freshman Tea Dance, 2; S. C. A., 2; House Committee, 2.

personality, cuddly, neat, natural, run-loving, fireplace-fire



ARLENE MARIE BICKFORD

Bicky

Liberal Arts Lisbon Falls, Maine

W. A. A., 1; Usher Glee Club Concert, 1; Decoration Committee
Victory Dance, 1; Fire and Air Raid Warden, 1; S. C. A. Sale Com-
mittee, 1; House President, 2; Masque and Candle, 2; Freshman Wel-
coming Committee, 2; Tea Dance Committee, 2; Senior Board, 2.

*athletic, loyal, argyles, good-natured, fancy-free, "Chief Standing
Hair"*



CYNTHIA ALICE BINFORD

Cinny

Liberal Arts Portland, Maine
University of Maine

Glee Club, 1, 2; Choir, 1, 2; Chairman Decoration Committee Cot-
ton Ball, 1; Glee Club Hostess, 1; Cabaret, 1; Red Cross, 1; Usher
Senior Dance, 1; Usher Senior Coffee, 1; President Day Student Organ-
ization, 2; Library Assembly, 2.

freckly-face, "H. P. B.", mischievous, "debby", bula girl



MARIE HELEN BRADLEY

Brad

Medical Secretary Hamden, Connecticut

House Committee, 1; W. A. A., 1, 2; Dinner Committee, Freshman
Tea Dance, 1; Riding Club, 2.

Jitterbuggin', conscientious, devilish, "I'm tellin' ya", "Windsor"



CONSTANCE BROWN

Connie

Junior College General Melrose, Massachusetts

House Committee, 1, 2; W. A. A., 1, 2; Riding Club, 1, 2; Riding
Club Secretary, 2; Class Treasurer, 2; Carnival Queen Candidate, 2.

mischievous, Bowdoin, "kinda good", horses, purple dresses





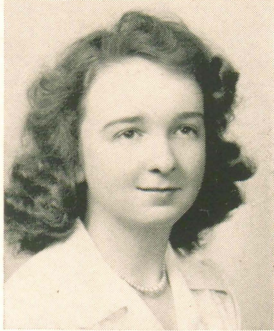
SHIRLEY CAPLAN

Cappy

Pre-Medical Technique Worcester, Massachusetts

Masque and Candle, 1, 2; Business Manager Dramatic Club, 2; Secretarial Science Club, 1; Usher Plays, 1; Ski Club, 2; S. C. A., 2; Committee Day Student Party, 2.

feather cut, phone calls, mail, "this love of mine", sincere



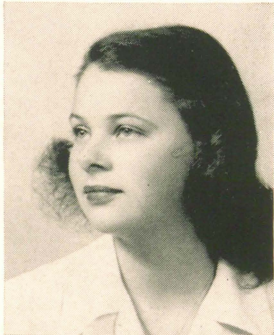
DOROTHY ELEANOR CAREY

Dot

Liberal Arts Portland, Maine
University of Maine

W. A. A., 1; Decoration Committee May Dance, 1; Masque and Candle, 2; Tea Dance Committee, 2; Ticket Committee Plays, 2.

H. P. B., Ob! Bi-Bi!, "Mn-hello-o", meticulous, winks



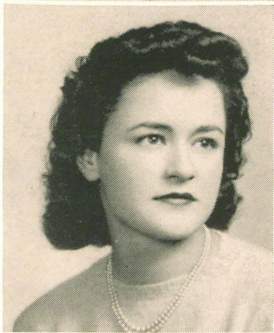
BARBARA CARNES

Barb

Pre-Nursing Auburndale, Massachusetts
Massachusetts General Hospital

Riding Club, 1; Decoration Committee Winter Carnival, 1; Decoration Committee Cotton Ball, 1; Chairman Refreshment Committee Day Student Party, 2.

vivacious, unpredictable, ruddy-glow, Postmarked Virginia, off-again



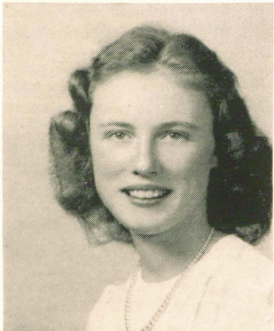
DOROTHY RUTH CHYNOWETH

Dot

Secretarial Science Stoneham, Massachusetts

Secretarial Science Club, 1, 2; Glee Club, 1; Tea Dance Committee, 2; Masque and Candle, 2; Decoration Committee Vic Dance, 2.

V-Mail, curly-top, giggle, neat, devilish



JOAN CLEVELAND

Jona

Liberal Arts South Portland, Maine
Skidmore College

Corresponding Secretary, 1; Decoration Committee Tea Dance, 1; Glee Club, 1, 2; Tennis, 1; Usher Commencement, 1; Vice President Glee Club, 2; TOWER Board, 2; Hostess Tea Dance, 2; Choir, 2; Skiing, 2.

banana, Scotch plaids, natural charm, eating curiosity

NORMA HANSON CLIFFORD

Cliffy

Pre-Nursing Melrose, Massachusetts

Chairman Ticket Committee Carnival Dance, 1; W. A. A., 1, 2; Fire Warden, 1; Hockey, 1, 2; Outing Club, 1; Refreshment Committee Vic Dance, 1; Ski Club, 2; House Committee, 2; Ticket Committee Vic Dance, 2; S. C. A., 2.

brown eyes, good sport, bombardier wings, sailing, snow and skies



DOROTHY ELIZABETH COOPER

Coopie

Journalism Secretary Attleboro, Massachusetts

W. J. C. News, 1, 2; Riding Club Vice President, 1; President, 2; Glee Club, 1; Usher Winter Carnival, 1; Hostess Riding Club Tea, 1; Committee Riding Club Dance, 1; Committee W. J. C. News Dance, 1; Freshman Reception Committee, 2; Committee Christmas Formal, 2; Circulation Manager W. J. C. News, 2; Assistant Editor TOWER, 2; Publicity Chairman W. J. C. News Vic Dance, 2.

Dana, pep, dungarees, sense of humor, versatile



HELEN LORAYNE COPELAND

Heldemite

Secretarial Science Wollaston, Massachusetts

Riding Club, 1; Secretarial Science Club, 1; Hostess Winter Carnival, 1; Riding Club, 2; Secretarial Science Club, 2; Red Cross Work, 2; Masque and Candle, 2; Chairman Field Ride, 2.

fish-flops, efficient secretary, Balbriggans, typing tests, sense of humor



D. ELAINE CORBIN

Lansey

Secretarial Science Portland, Maine

Glee Club, 1.

Blonde, ATO, music, "Marine"



MARGARET COULSON

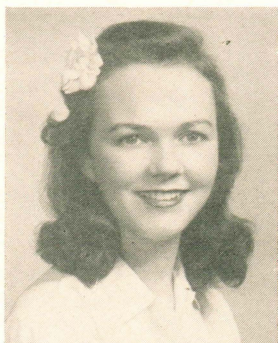
Peg

Pre-Merchandising Winchester, Massachusetts

Skiing, 1; Baseball, 1; Tennis, 1; Basketball, 1; Baseball Manager, 1; Freshman Class Officer, 1; House Committee, 1; Reception Committee Freshman Tea Dance, 2; Picnic for Freshman Committee, 2; Welcoming Committee, 2; W. A. A., 2; Winter Carnival Court, 2.

Powers model, soulful eyes, all-American, sport, true blue, "last looks"



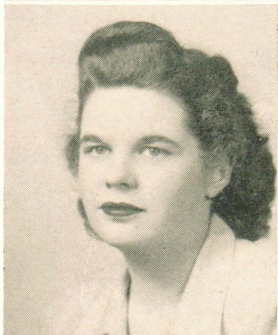


PATRICIA JEAN DARLING

Pat

Pre-Medical Technique Lowell, Massachusetts
Chairman Inter-house Sing, 1; Glee Club, 1, 2; W. A. A., 1, 2;
Choir, 1, 2; Ski Club, 1; Decorating Committee Senior Vic Dance, 2;
Music Committee Christmas Formal, 2.

Bowdoin, George, mischief, inevitable smile, sweet



FLORA ELLEN DAVIS

Fluff

Secretarial Science Fairview, Massachusetts
Secretarial Science Club, 1, 2; Decorations Committee Commence-
ment, 1; Freshman Reception Committee, 2.

Joe, attractive, "Are you kiddin'", lipstick, smiles

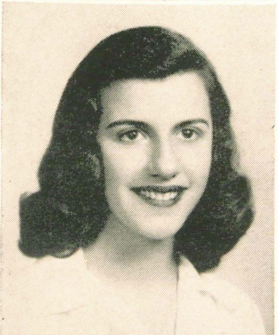


MARJORIE ANNE DENNIS

Denny

Junior College General Rumford, Maine
W. A. A., 1, 2; Decoration Committee Commencement, 1; House
Committee, 1; S. C. A., 2; Freshman Tea Dance, 2; Welcoming Com-
mittee, 2.

mashed potatoes, dancing, poise, lively, attractive



ELIZABETH MIGNERY DEWEY

Betty

Junior College General Manchester, Connecticut
House Committee, 1; W. A. A., 1, 2; S. C. A. Sale Committee, 2;
Vic Dance Committee, 1; Freshman Welcoming Committee, 2; Masque
and Candle, 2; Fire and Air Raid Warden, 2; S. C. A., 2; Freshman
Tea Dance, 2; Usher Freshman Reception, 2.

fratpin, dreamy, sparkle, smooth "dark eyes"



GERTRUDE DUNCKLEE

Trudy

Medical Secretary Mystic, Connecticut
Glee Club, 1, 2; Softball, 1; Choir, 2; Masque and Candle, 2;
Carnival Decoration Committee, 2; Christmas Formal Usher Commit-
tee, 2; S. C. A., 2; Freshman Reception Committee, 2; Hockey, 2;
Soccer, 2; Props Committee Masque and Candle, 2.

George, attractive, mail, Italian sandwiches, conscientious

MABEL ALICE EATON

Billi

Junior College General
Fire Chief and Air Raid Warden, 2; Freshman Tea Dance Committee, 2; Freshman Reception Committee, 2.
fun loving, good dancer, best all-around, great pal, lackadaisical



ELISABETH FRANCES FINN

Betts

Pre-Merchandising
Bishop Lee School
Portland, Maine
dark hair, boogie woogie, glamour, "seis-cents", humor



NORMA EDITH FOSSETT

Norm

Medical Secretary
Union, Maine
House President, 1; Basketball, 1, 2; Softball, 1; Secretarial Science Club, 1; House Committee, 2.
domestic, Don, conscientious, knitting, talking in sleep



LOUISE FROST

Lou

Medical Secretary
Springfield, Massachusetts
Student Council, 1; Co-Chairman Carnival Dance, 1; Ticket Chairman Day Student Party, 1; Hostess President's Tea, 1; Student Council President, 2; Committee Work, 2.
"Maggie Sullivan", sleepy, "Give me the Navy", thoroughbred, conversationalist



ELEANOR COLLINS FULLER

Ellie

Junior College General
Springfield, Massachusetts
House Committee, 1; W. A. A., 1, 2; S. C. A., 2; Masque and Candle, 2; Freshman Reception Committee, 2; Fire Warden, 2; Usher Christmas Formal, 2; Usher Carnival Dance, 2.
good natured, baths, music, smiles, "I wouldn't know!!"





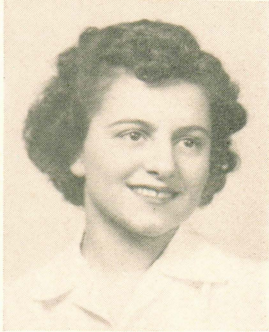
HELEN WINIFRED GAHM

Gabmie

Medical Secretary Andover, Massachusetts

W. A. A., 1, 2; Glee Club, 1; Food Committee Christmas Formal, 1; House Committee, 1; Hostess Freshman Dance, 2; Usher Christmas Formal, 2; Decoration Committee Carnival Formal, 2.

Tom, "On the Shores of Tripoli", dimples, "Yankee Doodle", thoughtful



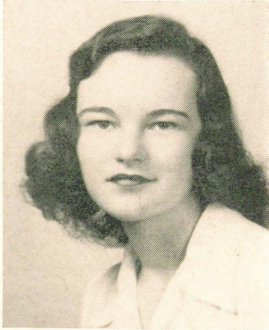
DOROTHY F. GALLI

Dottie

Junior College General Portland, Maine

Glee Club, 1, 2; Committee Freshman Cabaret, 1; TOWER Board, 2.

sincere, ambitious, good natured, petite, musical



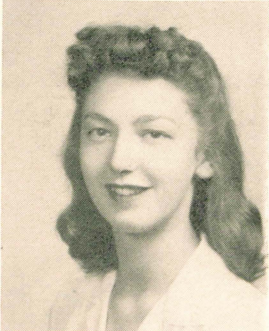
VIRGINIA CHURCH GAMWELL

Ginny

Secretarial Science Pittsfield, Massachusetts

Usher Senior Ball, 1; Decoration Committee Vic Dance, 1; Usher May Pageant, 1; Usher Commencement activities, 1; Masque and Candle, 1, 2; Secretarial Club, 1; Hallowe'en Party Committee, 1; Hockey Team, 1; Skiing, 1; Freshman Reception Committee, 2; Fire Chief and Air Raid Warden, 2; Hockey, 2; Secretary S. C. A., 2; S. C. A. Conference, 2.

"Darling!!", Yale, frank, "Pamour-toujours!" practical



MARJORIE ALLEN GARDNER

Marj

Pre-Occupational Therapy Orono, Maine

W. A. A., 1, 2; Decoration Committee Cotton Ball, 1; Usher Christmas Formal, 2; Decoration Committee Christmas Formal, 2; Usher and Decoration Committee Winter Carnival Formal, 2; House Committee Snow Sculpture, 2.

personality; mid-nite snacks, "My Life with Carolyn", gardenias, "Sam"



DOROTHY GIBBS

Ditty

Pre-Nursing Saugus, Massachusetts

Massachusetts General Hospital

Skiing, 1; Freshman Reception Committee, 2; Bell Decoration Committee, 2; Tea Dance, 2.

generous, "Ye-es!!", sense of humor, falling up the 13th stair, student

HELEN THOMPSON GODDARD

Hel

Medical Secretary Attleboro, Massachusetts

Riding Club, 1, 2; Glee Club Librarian, 2; Chairman Finance S. C. A., 2; Freshman Committee, 2; Fire and Air Raid Warden, 2; Usher President's Tea, 2.

borses, harmony, brown eyes, "Ob-Ob!", nice hair



ELSA BEATRICE GOODMAN

Els

Liberal Arts Bangor, Maine
University of Pennsylvania

Glee Club, 1, 2; Chairman Christmas Formal Dinner, 1; Chairman House Entertainment, 1; Masque and Candle, 1; Decorating Committee Christmas Formal, 2; Chairman Decorations Christmas Chapel Service, 2; Riding Club, 2; Freshman Welcoming Committee, 2.

"Mike", sweet, Psych, understanding, sincerity



EDITH GORDON

Egee

Liberal Arts Worcester, Massachusetts
Pembroke College

Masque and Candle, 1, 2; Ski Club, 1; Glee Club, 1; Cabinet Member S. C. A., 2.

pretty, smile, wit, animation, Colby



MAVIS S. GORTON

Liberal Arts Arlington, Massachusetts

Glee Club, 1, 2; Choir, 1, 2; Decoration Committee Tea Dance, 1; Ticket Committee Glee Club Concert, 1; Swimming, 1; Masque and Candle, 2; Hostess Tea Dance, 2; House President, 2; Ticket Committee Christmas Formal, 2; Committee Carnival Dance, 2; Nomination Chairman Class Officers, 2.

appetite, exaggeration, sense of humor, Cape Cod, sweet smile



EDITH MARCELLINA GREGORY

Greg

Pre-Medical Technique Dalton, Massachusetts
Maine General Hospital

Archery Tournament, 1; Bowling Tournament, 1; Air Raid and Fire Warden, 1; W. A. A., 1, 2; Masque and Candle, 2; House President, 2; Committee Freshman Tea Dance, 2; Freshman Reception Committee, 2; Thanksgiving Day Dinner Committee, 2.

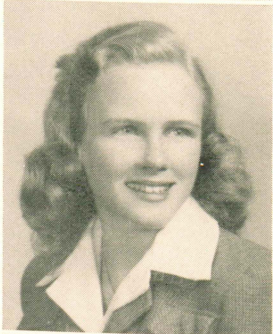
"chicken", alarm-clock, likeable, hair-cuts, generous





ANN HAMEL

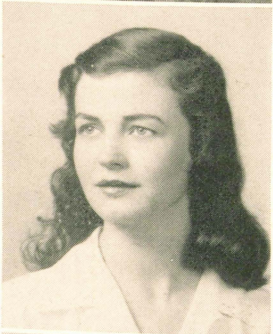
Medical Secretary Portland, Maine
Freshman Class Treasurer, 1; Usher Commencement, 1; Glee Club, 1;
TOWER Circulation Manager, 2 Usher Freshman; Reception, 2.
monogrammed sweaters, dimples, jewelry, dancing, humor



GLORIA ANN HURLOCK

Glo

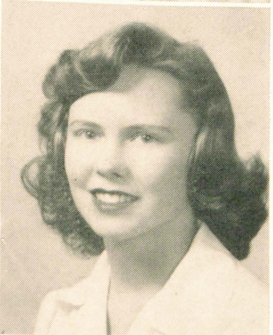
Medical Secretary Marblehead, Massachusetts
Ski Club, 2; Honor List, 1; Hockey, 2; Tennis, 2; Secretarial
Science Club, 2; S. C. A., 2; Freshman Reception Hostess, 2.
vivacious, Bud, ski jump nose, brainy, blonde



FRANCES JENKINSON

Frankie

Pre-Merchandising Kennebunk, Maine
Riding Club, 2; Winter Carnival Committee, 2; Masque and Can-
dle, 1, 2; Freshman Tea Dance Committee, 2.
"Carmichael", captivating, smiling eyes, gay, "honestly"



MARJORIE M. JENSEN

Midge

Secretarial Science Longmeadow, Massachusetts
Glee Club, 2; Secretarial Science Club, 1; Hostess Carnival Dance, 1;
Choir, 2; Freshman Tea Dance, 2; Freshman Welcoming Committee,
2; Fire Warden and Air Raid Warden, 1, 2.
Petite, loyal, Perry, roses, "Ob, to pass my 50!"



NORNIE KATHLEEN JOHNSON

Junior College General East Douglas, Massachusetts
Social Committee, 1; Glee Club, 2; Skiing, 1; Fire Warden, 1; W. A.
A., 1; S. C. A., 2; Freshman Tea, 2.
giggle, singing, "early bird", Air Mail Special, Jickey

JEAN CARLYLE JORDAN

Junior College General
Harvard Extension Course

Portland, Maine

W. J. C. News, 1, 2, 3; TOWER Board, 2; Publicity Committee News
Dance, 2; Masque and Candle, 1.

whimsy, essays, Wagner, landscapes, pretzels



JOANNE JORDAN

Jo

Junior College General

Bangor, Maine

Riding Club, 2; Riding Club Dance Committee, 1; W. J. C. News,
1; Fire and Air Raid Warden, 1; W. J. C. News Dance Committee, 1;
Cotton Ball Committee, 1; Treasurer Riding Club, 2; Business Man-
ager TOWER, 2; Chairman Ticket Committee Christmas Formal, 2.

"Little-one", Dick, Give me a horse I can ride!, New York trips, roses



LEAH KAATZ

Lee

Medical Secretary

Portland, Maine

Secretarial Club, 1.

Frank, ambitious, friendly, thoughtful



LOUISE GRINNELL KEAY

Red

Pre-Medical Technique

West Medford, Massachusetts

New England Hospital for Women and Children

Modern Dance Group, 1, 2; Supper Committee Tea Dance, 2; Fire
and Air Raid Warden, 2; Freshman Reception Committee, 2.

Red, ballet, purple passion, "the little man", frankness



LOUISE JEAN KERR

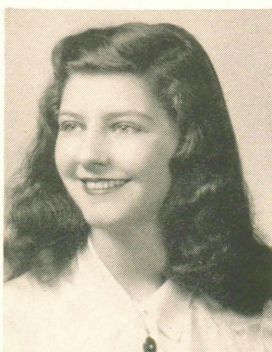
Pre-Merchandising
Chamberlain School

Auburn, Maine

House Committee, 2; Usher Commencement, 1; Decoration Com-
mittee Commencement, 1; Usher Faculty Reception, 2; TOWER Board,
2; Riding Club, 1; S. C. A., 2.

skiing pert, clothes, vivacious, "Dr. Denton's"

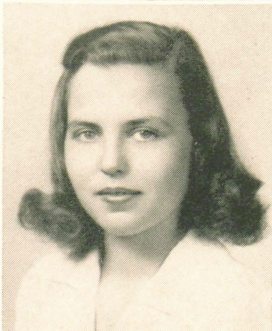




BETTY LEE SUSANNE KING

Junior College General Cape Elizabeth, Maine
Cotton Ball Ticket Committee, 1; Christmas Formal Ticket Committee, 1; Usher Commencement, 1.

Happy-go-lucky, smiling, sympathetic, friendly, attractive

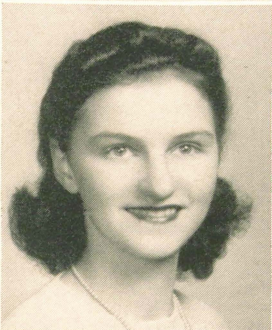


ELIZABETH PRENTISS KING

Betsy

Junior College General Portland, Maine
Social Committee, 1; Usher Commencement, 1; Skiing, 1; Student Council, 2; TOWER Advertising Committee, 2.

bridge, cokes, vivacious, never still

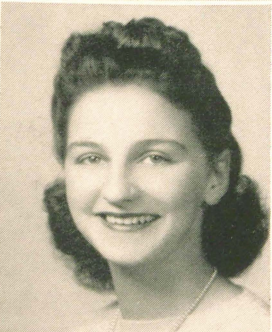


FRANCES LAMBERTSON

Franny

Secretarial Science Clinton, Maine
Secretarial Science Club, 1; Basketball, 1.

dancing, roller-skating, giggles, Walter, affectionate

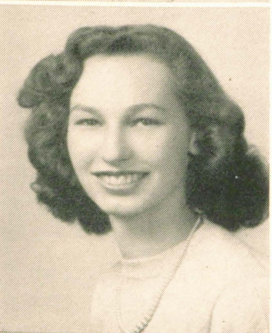


PHYLLIS DOROTHY LAMBERTSON

Phyl

Secretarial Science Clinton, Maine
Basketball, 1, 2; Dance Committees, 1, 2; Vice President House, 1; Secretarial Science Club, 1

dancing, roller-skating, Andy, giggles, photographs



PHYLLIS SAVILLE LAWRENCE

Phyl

Junior College General Nashua, New Hampshire
W. A. A., 2; W. J. C. News, 1, 2; Fire and Air Raid Warden, 2; Decorating Committee News Dance, 1; Skiing, 1; S. C. A., 2; Freshman Welcoming Committee, 2; Barn Dance Committee, 2.

Russ, loyal, impulsive, pert, fun-loving

SUZETTE M. LEBOURDAIS

Bunny

Junior College General Biddeford, Maine

Secretarial Science Club, 1; W. A. A., 1; Glee Club, Choir, 1, 2;
Freshman Reception Committee, 2; Masque and Candle, 2.

vivacious, jewelry, "Del", petite, nail polish



FRANCES LEMPERT

Lemp

Junior College General Lewiston, Maine

W. A. A., 1, 2; Masque and Candle, 2; Tea Dance, 2.

Eppie, "telephone is ringing", clothes, Portsmouth, friendly



ELSIE MARIE LILJEHOLM

Els

Medical Secretary Center Harbor, New Hampshire

Glee Club, Choir, 1, 2; Secretarial Club, 1, 2; W. A. A., 1, 2;
Ticket Committee M. I. T. Concert, 1; Cotton Ball Committee, 1;
House Committee, 2; Refreshment Committee Tea Dance, 2; S. C. A.,
2; Reception Committee, 2; Christmas Formal Decoration Commit-
tee, 2; Usher and Decoration Committee Winter Carnival Formal, 2.

capable, Africa, sweet and versatile, bowling



ELSA LOFGREN

Ei

Junior College General Hyde Park, Massachusetts

Glee Club, 1; House President, 1; Usher Commencement, 1; W. A.
A., 1, 2; International Relations Club, 2; Christmas Banquet Commit-
tee, 2; Freshman Week Committee, 2.

conscientious, vivacious, smooth skater, brat, New Year's Eve



MARCIA ELAINE LOUNSBURY

Medical Secretary Simsbury, Connecticut

Glee Club, 1, 2; Secretarial Science Club, 1; Fire Warden, 1, 2;
Freshman Welcoming Committee, 2; Chairman Music Christmas
Formal, 2; Cabinet Member S. C. A., 2; Masque and Candle, 2; Com-
mittee Snow Sculpture, 2; Thanksgiving Committee, 2.

*"What shall I wear?", personality, "No mail again today!" U. S. N.,
studious*





LUCILLE MARIE LURIER

Lu

Secretarial Science Worcester, Massachusetts
Ski Club, 1, 2; Secretarial Science Club, 1, 2; S. C. A., 2; Fire
Warden, 2; Masque and Candle, 2; Knitting Club, 1.

brains, quiet, extended vacations, clothes, knitting

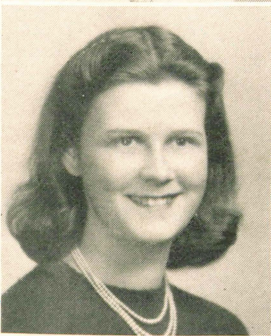


JUNE MacFARLAND

Mac

Junior College General Lincoln, Massachusetts
Hostess Tea Dance, 2; Masque and Candle, 2.

good line, first breakfast, double talk, men, considerate



ROBERTA MARY MacLEAN

Bobbie

Junior College General Berlin, New Hampshire
Fire Warden, 1; Hostess Tea Dance, 2; W. J. C. News, 2; Decora-
tion Committee W. J. C. News Dance, 2.

jitterbug, "Ob, my soul!", good writer, movies, imagination



ELIZABETH McCANN

Bibi

Junior College General Portland, Maine
Lesley School

Glee Club, 1; Tea Dance, 1; Usher Winter Carnival Formal, 1;
Ways and Means Committee, 2; Red Cross, 2.

"Ob, Dotty!", giggles, baby blanket, thoughtful, blushes



ALICE BONNER MCGINTY

McGint

Liberal Arts South Portland, Maine
International Relations Club President, 1, 2; Program Chairman, 3;
I. R. C. Conferences, 2, 3; Chapel Speaker, 2, 3; Circulation Mana-
ger W. J. C. News, 1; Editor, 2, 3; TOWER Board, 2, 3; TOWER Short
Story, 1; TOWER Essay, 2; S. C. A., 3; Day Student Class Secretary,
2; Delegate P. T. A. Panel Discussion, 2; Ticket Committee Yale
Concert, 1; Chairman W. J. C. News Dance, 2; Dean's List, 1, 2, 3;
High Honors, 1.

versatile, perpetual motion, brilliant wit, wearing of the green

JEAN MARION MCKENZIE

Mac

Liberal Arts Portland, Maine

International Relations Club, 1, 2; Committee Cotton Ball, 1; Dean's List, 1, 2; Treasurer, I. R. C., 1; Financial Committee Senior Class, 2; Usher Freshman Reception, 2; Decoration Committee Senior Vic Dance, 2.

H. P. B., petite, witty, intellectual, "defender of Stalingrad"



JOYCE McLEAN

Scotchie

Junior College General Bar Harbor, Maine

Fire Warden, 2; Masque and Candle, 2; Secretarial Club, 2; Decoration Committee Barn Dance, 2.

good-natured, "auntie", perfume, U. of M., shampoo



JANE MARSHALL

Liberal Arts Portland, Maine

Kirksville College of Osteopathy and Surgery

Co-Chairman Cotton Ball, 1; May Pageant, 1; Usher Glee Club Concert, 1; International Relations Club, 1, 2; Usher Freshman Reception, 2; Usher Tea Dance, 2; Recording Secretary Class, 2; Art Editor TOWER, 2.

bubbling, enthusiastic, "H. P. B.", tolerant, not TOO early



PATRICIA GRACE MATTISON

Pat

Secretarial Science Rumford, Maine

House President, 2; Co-Chairman Freshman Tea Dance, 2; Senior Nomination Committee, 2; Decoration Committee Christmas Formal, 2; Secretarial Science Club, 2; Ski Club, 2; Committee Resident Board, 2.

skiing, true friend, little sister, independent, alarm clock



JUNE MAXINE MERRILL

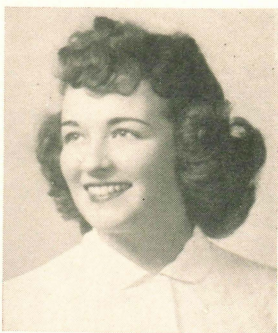
Junebug

Junior College General Damariscotta, Maine

House Committee, 1; Decoration Committee Tea Dance, 1; Bowling Tournament, 1; Committee Christmas Formal, 2; Usher Vic Dance, 2.

bridge, "Skeet", modest, mail, peppy

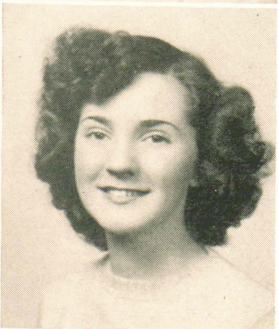




HAZEL ELIZABETH MEWER

Betty

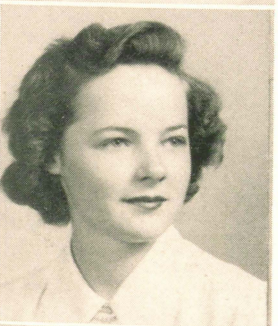
Junior College General Old Orchard Beach, Maine
Riding Club, 2; House Committee, 2; Freshman Tea Dance, 2.
smooth dancer, jolly, men, sense of humor, "still water runs deep"



MARILYN ELAINE MILETTE

Lynne

Medical Secretary Laconia, New Hampshire
Riding Club, 2; Freshman Reception Committee, 2; Day Student
Party Committee, 2; Little Sister Party Committee, 2.
Stan, smooth dancer, rare moods, Lambda Chi Alpha, quiet(?)



SHIRLEY HUTCHINS MILLER

Sbirl

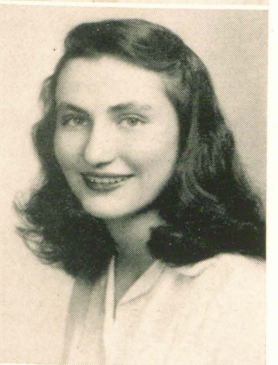
Pre-Nursing Portland, Maine
Freshman Day Student Reception Committee, 1; Usher Senior
Chapel, 1; Ticket Committee Cotton Ball, 1; Ways and Means Com-
mittee, 2; Freshman Tea Dance, 2; Chairman Decorations Vic Dance,
2.
H. P. B., Dresden, dainty, sincere, smiles



MARJORIE ARNOLD MINER

Marjie

Secretarial Science Providence, Rhode Island
Decoration Vic Dance, 2; Entertainment Committee Freshman Tea
Dance, 2; Entertainment Committee Hallowe'en Dance, 2; S. C. A., 2.
witty, roses, Lynn, petite, "Penn"



OLIVE GODDARD MOODY

Liberal Arts Exeter, New Hampshire
Masque and Candle, 1, 2; House Committee, 1; Ticket Committee
Christmas Formal, 1; Committee Christmas Dinner, 1; W. J. C. News,
1, 2; Decoration Committee Cotton Ball, 1; Hostess Freshman Tea
Dance, 2; Usher Informal Dance, 2; Usher Christmas Formal, 1, 2;
Committee Thanksgiving Dinner, 2.
redbeads, skiing, hair, generous, pajamas

INEZ CAROLYN MORRILL

Pre-Medical Technique Litchfield, New Hampshire

May Pageant, 1; Glee Club, 1; Refreshment Committee, 2; Committee Vic Dance, 2.

"Einar", dimples, short and sweet, witty, "He's got a perfect alibi" —



MARJORIE MORRIS

Peg

Pre-Merchandising Duke University Bangor, Maine

Riding Club, 1, 2; Hostess Freshman Tea Dance, 2; Masque and Candle, 2; Committee Outdoor Supper, 2.

"Definitely", bewitching, Colgate smile, dramatics, mermaid



MARY ISABELLE MURCH

Murchie

Medical Secretary South Casco, Maine

Secretarial Science Club, 1; W. A. A., 1, 2.

athletic, calm, moody, sophisticated, stubborn



NANCY ANNE MARIE MURPHY

Murph

Medical Secretary Brockton, Massachusetts

Secretarial Science Club, 1; Masque and Candle, 1, 2; Chairman Publicity Masque and Candle, 1; Nomination Committee, 1; Decoration Tea Dance, 1; S. C. A. Cabinet, 2; House Committee, 2; Corresponding Secretary Class, 2.

gullible, Marines, "Honest, I'm telling you!" roommate(s)



PRISCILLA MOULTON NICHOLS

Pussy

Junior College General Reading, Massachusetts

Freshman Tea Dance, 1, 2; S. C. A., 2; W. A. A., 1, 2; House Committee, 1, 2; Bowling, 1; Freshman Welcoming Committee, 2.

devilish, bride, Navy, studios!!!, fun





SHIRLEY V. NUNES

B-dirl

Junior College General New Bedford, Massachusetts

Glee Club, 1, 2; Choir, 1, 2; Chairman Publicity Committee Senior Vic Dance, 1; Publicity Committee Glee Club Concert, 1; Publicity Committee Commencement Concert, 1; Publicity Committee Christmas Formal, 2; Fire and Air Raid Warden, 2; House Committee, 2.

Vogue, artistic, unattached (?), svelte, smoke gets in my eyes!



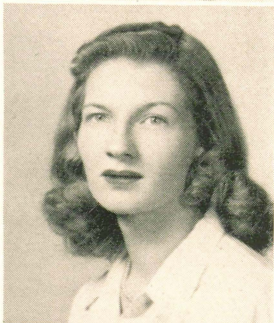
JANE PORTER OAKES

Janie

Junior College General Rangeley, Maine

W. A. A., 2; Basketball, 1, 2; Hockey, 1; Masque and Candle, 2; Riding Club, 2.

Jimmy, basketball, 12 o'clocks, live wire, chatter-box



JEAN OBRION

Taffy

Liberal Arts Portland, Maine

University of Texas

W. J. C. News, 1, 2; Student Council, 1; Co-Chairman Red Cross Drive, 1; Chairman Music Committee News Dance, 1; Exhibition Group Modern Dance, 1; May Pageant, 1; Usher Commencement Concert, 1; Usher President's Coffee, 1; Chairman Social Committee, 2; Chairman Day Student Welcoming Committee, 2; General Chairman Christmas Formal, 2; Literary Editor TOWER, 2; Co-Chairman Victory Book Campaign, 2; Chairman Hostesses Freshman Tea Dance, 2; Chairman Ski-joring Committee Carnival, 2; Riding Club, 1, 2; Chairman General Arrangements Committee News Dance, 2; Freshman Assembly, 1; Hostess Riding Club Tea, 2; TOWER Poetry and Story Prize, 1; Psychology Group, 2.

poetry, Navy-Blue-and-Gold, perverse, mystopbile, orchids



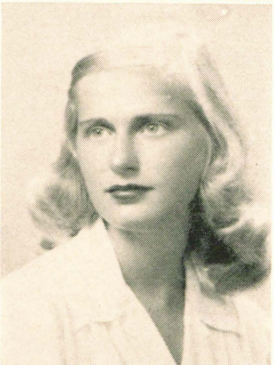
VICTORIA GEORGIANNA PARAS

Vicki

Junior College General Portsmouth, New Hampshire

Fire and Air Raid Warden, 2; W. A. A., 2; Freshman Tea Dance, 2.

"Dark Eyes", "Here I am, you lucky people!", sleep, vivacity, intelligence



LOUISE PARKER

Weez

Liberal Arts Gorham, Maine

Connecticut College for Women

Secretary Masque and Candle, 1; "Out of the Frying Pan", 1; Student Council, 1; Chairman Freshman Assembly, 1; Usher Commencement, 1; Glee Club, 1, 2; Manager Glee Club, 2; Masque and Candle, 2; Court of Carnival Queen, 2; Chairman Social Committee, 2; House Chairman, 2; House Committee, 2; Co-Chairman Victory Book Campaign, 2.

Saroyan, poise, sunshine, glamour, music

MARCELLE ROBINSON PARKER

Cellie

Business Manchester, New Hampshire

Masque and Candle, 1, 2; Christmas Dinner Decorations, 1; Committee May Queen, 1; Red Cross Drive, 1; Usher Commencement, 1; House Committee, 2; Hostess Freshman Tea Dance, 2; Chairman Christmas Dinner Decorations, 2; Committee Carnival Ball, 2.

ensigns, bridge, sophisticated, Camels, "Ob, what gams!"



ELAINE PATTERSON

Pat

Secretarial Science West Newton, Massachusetts

Secretarial Science Club, 1; Knitting Club, 1; Chairman Decoration Committee Christmas Formal, 2; Chairman Make-up Committee Masque and Candle, 2; S. C. A., 2; W. A. A., 2; Committee Snow Sculpture Winter Carnival, 2.

congenial, chatter-box, "kittens", flighty



IDA MAE PEVERLEY

Pev

Junior College General Lisbon Center, Maine

W. A. A., 1, 2; W. J. C. News, 1, 2; House Committee, 1; Decoration Committee Barn Dance, 1; Hockey, 2; Badminton, 2; Decoration Committee News Dance, 2.

cute, twinkle, hair, humour, peaches-and-cream-complexion



VIRGINIA ANNETTE PITTS

Ginny

Secretarial Science Harrison, Maine

Masque and Candle, 1; President Masque and Candle, 2; W. A. A., Treasurer, 1; Vice President, 2; Secretarial Science Club, 1; May Day Committee, 1; Winter Carnival Committee, 2.

Miss Barrymore, conscientious, spirited, leader, independent



DOROTHY MILDRED POLLEY

Dot

Pre-Medical Technique Malden, Massachusetts
Maine General Hospital

Masque and Candle, 2; Freshman Reception Committee, 2; Hal-
lowe'en Party Committee, 2.

Bob, quiet, studious, dimples, sweetheart



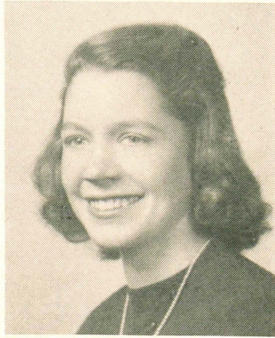


LUCILLE FRANCES RALPH

Cille

Medical Secretary Edgewood, Rhode Island
Riding Club, 1; Ski Club, 1; W. A. A., 1, 2; S. C. A., 2; Committee Senior Dance, 2.

Stan, diamond, letters, Trinidad, Navy

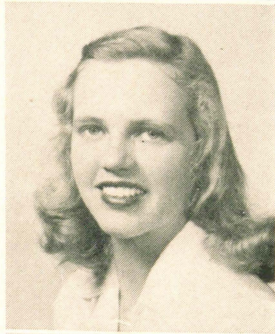


FRANCES RAND

Frannie

Medical Secretary Portsmouth, New Hampshire
W. A. A., 1, 2; S. C. A., 2; Masque and Candle, 2; Freshman Reception Committee, 2; Props Chairman One-Act Plays, 2; Decoration Committee Christmas Formal, 2.

diamond, Paul, "shore", carefree, congenial

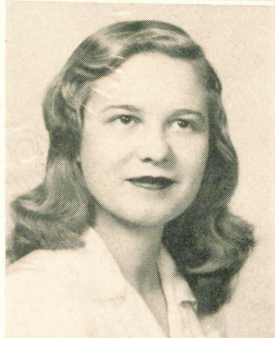


HELEN L. RICHARDSON

Honey

Medical Secretary Melrose, Massachusetts
W. A. A. Vice President, 1; President, 2; House Committee, 1; General Chairman Carnival Dance, 2; Freshman Reception Committee, 2; Court Carnival Queen, 2.

skiing, tan, Ipana smile, North Conway, vivacity



BEVERLY ROBERTSON

Bepie

Business Waterville, Maine
S. C. A., 2; W. A. A., 2; Masque and Candle, 2; Freshman Tea Dance Committee, 2; Winter Carnival Committee, 2.

frankness, temperamental, smooth, gardenias, "devine" times



BARBARA ANN ROBINSON

Barbi

Junior College General Portland, Maine
Tobe-Coburn
Decoration Committee Freshman Tea Dance, 1; Barn Dance, 1; Cotton Ball, 1; Glee Club Concert, 1; Treasurer Senior Class, 2; W. J. C. News, 2; Usher Freshman Tea Dance, 2.

knitting, sketching, "H. P. B.", mischievous, "fire-engine-clang-clang"

CHARLOTTE CHAPIN ROOT

Charl

Junior College General
Newton Center, Massachusetts
Glee Club, 1, 2; Fire Warden, 1; Hostess Glee Club Concert, 1; S. C. A., 2; Freshman Tea Dance Committee, 2; Usher Faculty Reception, 2.
D. U., The "fox", curly locks, sparkling eyes, sense of humor



ELEANOR RUTH RUBINSKY

Liberal Arts
Portland, Maine
musical, "H. P. B.", amiable, Spanish, ice-cream-with-chocolate-sauce



CHARLOTTE J. RUSSELL

Medical Secretary
Portland, Maine
Committee Freshman Cabaret, 1; Riding Club, 2.
conscientious, ambitious, considerate, versatile, sense of humor



PRISCILLA SARGENT

Pris

Junior College General
Winchendon, Massachusetts
Glee Club, 2; Honorable Mention Skiing, 2; Masque and Candle, 2; S. C. A., 2; W. A. A., 2.
dry humor, scatterbrain, rhumba, friendly, "Brenda"

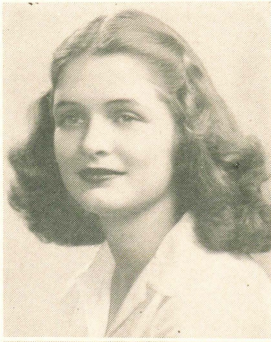


RUTH FRANCES SAYRE

Ruthie

Medical Secretary
Longmeadow, Massachusetts
Secretarial Science Club, 1; W. A. A., 1, 2; Refreshment Committee Senior Vic Dance, 2; Air Raid Warden, 2.
knittin', baseball, auntie, "sleepy-time gal", sincere





JANE SHANNON

Janie

Medical Secretary

Laconia, New Hampshire

House Committee, 1; Decoration Committee Cotton Ball, 1; W. A. A., 1, 2; Usher Senior Chapel, 1; Usher Carnival Ball, 1; Usher M. I. T. Concert, 1; Ski Club, 1; Hersey Interhouse Sing, 1; Glee Club, 2; Choir, 2; Chairman Hallowe'en Day Student Party, 2; S. C. A., 2; Usher Christmas Formal, 2; Ticket Committee Christmas Formal, 2; Fire Warden, 2; Usher Carnival Ball, 2.

N. H. U., happy-go-lucky, cute, pigtails



ALICE ELIZABETH SHAW

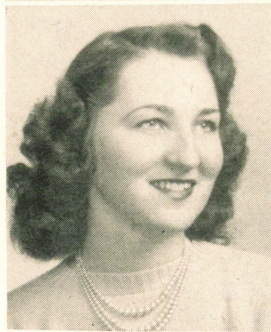
Al

Liberal Arts
Bates College

Portland, Maine

Masque and Candle, 1, 2; Ski Club, 1; Freshman Tea Committee, 1; Cotton Ball Committee, 1; Head Usher Masque and Candle, 2; Senior Dance Committee, 2.

"H. P. B.", prompt, fastidious, quiet, carnations



NATALIE LILLIAN SMALL

Nat

Liberal Arts
Bates College

Gorham, Maine

W. A. A., 1, 2; W. J. C Trio, 1; Glee Club, 1, 2; Entertainment May Pageant, 1; Art School Exhibition, 1; Freshman Reception, 1; Masque and Candle, 2; International Relations Club, 2.

Weekends, dancing, violin, eyelashes, food



BARBARA LUCILLE SMITH

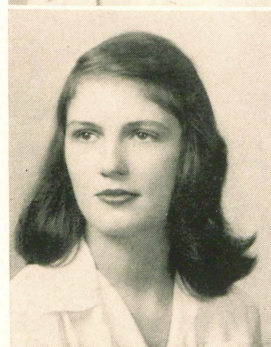
Barb

Secretarial Science

Worcester, Massachusetts

Vice President Secretarial Science Club, 1; Commencement Usher, 1; Chairman Decoration Committee Barn Dance, 1; Committee Christmas Dinner, 1; Committee Freshman Tea Dance, 1; Secretarial Science Club President, 2; Masque and Candle, 2; House Committee, 2; Chairman Patrons Senior Vic Dance, 2; Usher Faculty Reception, 2.

coats, Warren, showers, neat kid, diamond



JANET D. SMITH

Jan

Pre-Nursing

Winchester, Massachusetts

Massachusetts General Hospital

Glee Club, 1, 2; Masque and Candle, 1, 2; Fire Warden, 1; Choir, 1, 2; Court Candidate Carnival Queen, 1; Usher Christmas Formal, 1; Chairman Freshman Tea Dance, 1; President Glee Club, 2; President S. C. A., 2; House Committee, 2; Carnival Queen, 2; International Relations Club, 2; Student Council, 2.

lovely, daisies and rain, sparkling, dungarees

CAROLYN BORDEN SPENCE

Cal

Business Waltham, Massachusetts

Glee Club, 1, 2; Choir, 1, 2; Manager Tennis Team, 1; Co-Manager Glee Club, 1; Secretarial Science Club, 1, 2; Fire Chief, 2; S. C. A., 2; Tennis, Hockey, Basketball, 2; Christmas Dance Ticket Committee, 2.

Johnnie, ambitious, singing, honestly, Aloha



PAULINE A. SPENCER

Polly

Medical Secretary East Northfield, Massachusetts

Glee Club, 1, 2; Fire Chief, 1, 2; Chairman Ushers Carnival Dance, 1; W. A. A., 1, 2; Decoration Committee Carnival Dance, 2; Chairman Supper Committee Tea Dance, 2; Freshman Welcoming Committee, 2.

sincerity, magnetic, light blue, contagious laugh



ANNE STANLEY

Medical Secretary Rockville Center, New York

Glee Club, 1, 2; Choir, 1, 2; Skiing, Softball, 1; Chairman Ticket Committee Cotton Ball, 1; Chairman Freshman Welcoming Committee, 2; Senior Class President, 2; House President, 2; Chairman Residence Board, 2.

Army, jokes in lab, nephews, daydreams, WAAC



MARY STEVENS

Steve

Pre-Merchandising Great Notch, New Jersey

Glee Club, 1, 2; Choir, 1, 2; Hockey, 1, 2; Softball, 1; Ticket Committee Carnival Dance, 1; Hockey, Soccer, 2.

casual, subtle humor, Marines, green eyes, mischievous



GERALDINE RUTH STREET

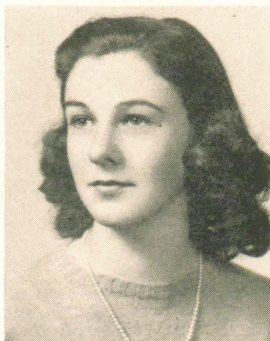
Gerry

Junior College General Yarmouth, Maine

International Relations Club, 2; Honor List.

quiet, frank, reserved, ambitious, music, food





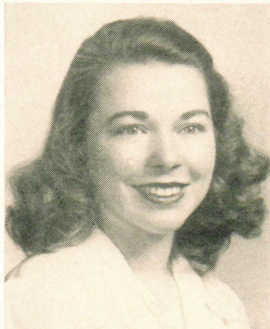
MARY LUCILLE THOMPSON

Lucy

Secretarial Science

Portland, Maine

quiet, athletic, calm, frank, enthusiastic



BARBARA ANNE TITCOMB

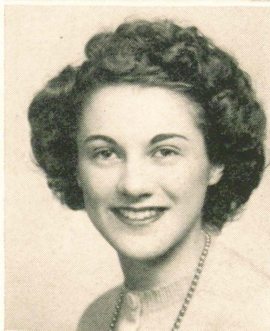
Tickie

Secretarial Science

West Hartford, Connecticut

Masque and Candle, 1, 2; Secretarial Science Club, 1, 2; Honor List, 1; May Carnival Usher, 1; Masque and Candle Costume Mistress, 2; Usher Freshman Reception, 2; Decoration Committee Christmas Dinner, 2.

merry madcap, intelligence, Conn. U., cute, emotional



GLADYCE FLETCHER TYLDSLEY

Medical Secretary

Beverly, Massachusetts

Glee Club, 1; Archery, 1.

curly top, jewelry, Bowdoin, B. U., Army Wings



JOYCE ANNA WALDMANN

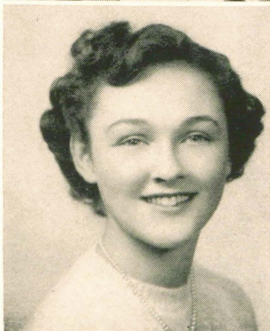
Wally

Medical Secretary

Rockville Centre, New York

Archery, 1; Decoration Committee Cotton Ball, 1; W. A. A., 1, 2; Masque and Candle, 1; Refreshment Committee Senior Vic Dance, 2.

telephone calls, revielle, "well-in New York," Fifth Avenue fashions, dark eyes



BARBARA WALTERS

Terry

Medical Secretary

Melrose, Massachusetts

Fire Warden, 1; Chairman Thanksgiving Day Program, 2.

vivacious, red roses, laughter, "Cbowie", men's ward

HOPE DAWN WARD

Pre-Nursing
Eastern Maine General Hospital

Greenville Junction, Maine

House Committee, 1, 2; Glee Club, 2; Masque and Candle, 2;
Chairman Refreshment Committee Senior Vic Dance, 2.

*conscientious, woman in white, Cavalry, "Hello Hope-Cologna",
magnetic*



HELEN MAE WATKINS

Junior College General
Bloomfield, Connecticut

Secretarial Science Club, 1; Outing Club, 1; Usher M. I. T. Concert, 1; Commencement Decoration Committee, 1; W. A. A., 1, 2; Masque and Candle, 2; Christmas Formal Decoration Committee, 2; Chairman Houghton Christmas Party, 2; Freshman Welcoming Committee, 2.

sweet, every Saturday night, prettiness, tall and sleek, powder blue



ALEXANDRIA HARRIET WILLIAMS

Alex

Junior College General
Portland, Maine

Business Manager W. J. C. News, 1, 2; Committee Cotton Ball, 1; Archery, 1, 2; Assistant Advertising Manager TOWER, 2; Committee Christmas Formal, 2; Ticket Chairman W. J. C. News Dance, 2.

*"H. P. B.", imaginative wit, super business manager, petite, adorable,
bridge*



CAROLYN HOLBROOK WILLIAMS

Tally

Medical Secretary
Saylesville, Rhode Island

Varsity Basketball Team, 1; Softball, 1; Hockey, 1, 2; W. A. A. Board, 2; Usher Christmas Formal, 1; President Houghton, 2; Masque and Candle, 2; Head Usher Christmas Formal, 2; Freshman Welcoming Committee, 2; Chairman Decorations Winter Carnival, 2.

versatile, motherly, telephone calls, kind-hearted, "quiet kids"



PRISCILLA ANN WINCHENBACH

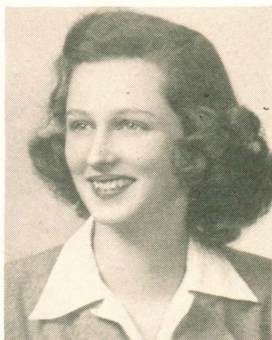
Pat

Home Economics Transfer
University of Maine

South Portland, Maine

versatile, Air Corps, keen humor, industrious, frank



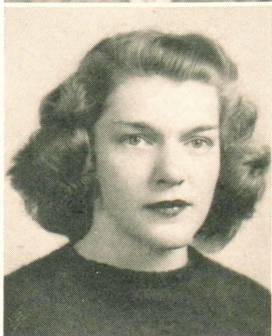


FAITH WING

Junior College General
Emerson College

Cape Elizabeth, Maine

Glee Club, 1; Christmas Formal, 1; Bowling Tournament, 1, 2.
energetic, lemon cokes, "At Last," "You Sil," Cbeerful



KATHRYN WOODBURY

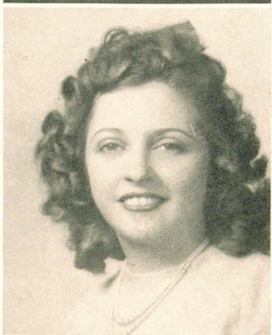
Woodie

Junior College General

Bristol, Connecticut

Glee Club, 1; Christmas Party, 1; TOWER Board, 2; Masque and
Candle, 2; House Committee, 2; Freshman Tea Dance Reception, 2.

interesting blond, winning, witty, carefree, charming



RUTH ISABEL WORMHOOD

Ruthie

Junior College General

East Sebago, Maine

Art School Exhibition, 1; Art School Tea, 1; W. A. A., 1, 2; House
Committee, 2; Masque and Candle, 2; Secretarial Science Club, 2; Re-
freshment Committee Hallow'en Party, 2; International Relations
Club, 2.

Bob, ring, artist, telephone calls, cherubic



JOSEPHINE WYMAN

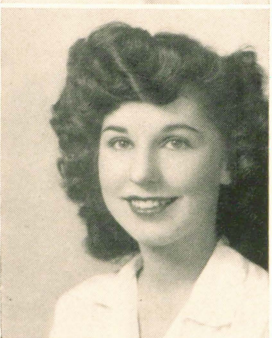
Jo

Junior College General

Millbridge, Maine

Riding Club, 1, 2; Committee Work, 1, 2.

unique, Army Air Mail, giggle, bright eyes, "I don't care but——"



PAULINE ELIZABETH YORK

Polly

Junior College General

Howland, Maine

Glee Club, 2; Choir, 2; Dining Room Singing Committee, 2.

artistic, studious, curlers, perfume, operas

CATHERINE FRANCES ZUKUNFT

Kay

Junior College General

Portland, Maine

Class Treasurer, 1; Glee Club, 1, 2.

music, men, flashing eyes, unique, beautiful



MARIE CHRISTINE ZUKUNFT

Maryia

Junior College General

Portland, Maine

Glee Club, 1, 2; Choir, 1, 2; Swimming, 1; Day Student Council, 1.

wind, perfectionist, Wagner, "taint necessarily so", hair



THIRD-YEAR STUDENT

DOROTHEA ISABELLE WILBUR

Dottie

Commercial Education

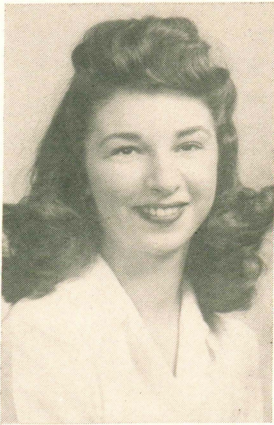
Saco, Maine

University of Maine

Usher and Chairman Glee Club Concert, 1; House Committee, 1, 2; Secretarial Science Club, 1, 2; W. A. A., 1, 2; Outing Club, 1; House President, 2, 3; Entertainment Committee Barn Dance, 2; Outing Club, 2; Bowling Tournament, 2; International Relations Club, 3; Secretarial Science Club, 3; Map Committee, 3; Finance Committee Barn Dance, 3.

Duchess, trial balance, dimples, genial, persevering



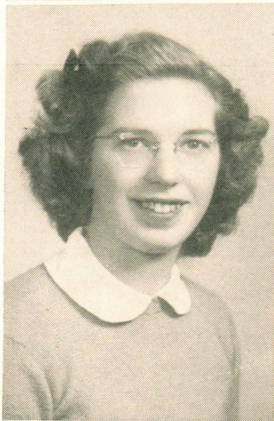


SPECIAL STUDENTS

DOROTHY MARY CORBO

Dot

Junior College General Quincy, Massachusetts
Riding Club, 2; W. J. C. News, 2; TOWER, 2; Masque and Candle, 2.
natural, conga, puss, babbly-go-lucky, lively



ALVA GERTRUDE FARROW

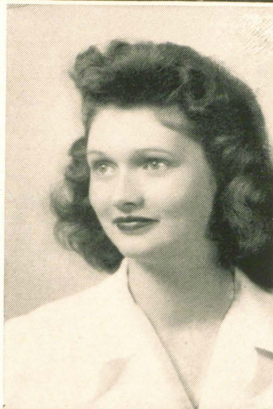
Junior College General North Conway, New Hampshire
Skiing, 1; Ski Club, 1; W. J. C. News, 1, 2; Masque and Candle, 2;
Masque and Candle Treasurer, 2; Assistant Art Editor TOWER Board,
2; Chairman Patrons Christmas Formal, 2; S. C. A. Board, 2; Pub-
licity Chairman Senior Vic Dance, 2; General Chairman W. J. C.
News Dance, 2; Freshman Welcoming Committee, 2.

Air Mail, Jean, "Si Si", exceedingly generous, Texas



MARTHA ELIZABETH LITTLE

Junior College General Damariscotta, Maine
Freshman Cabaret, 1.
sweet smile and always babbly, friendly, always willing, Field Artillery



DOROTHY LOVELAND

Dottie

Liberal Arts Belmont, Massachusetts
Simmons College
Fire Warden, 2.
sincere, animated, bridge, frowns, giggles

SENIOR STATISTICS

PRETTIEST

Popular Janet Smith of Houghton Hall was our choice both for campus beauty and for Carnival Queen. Bearing the royal train and close seconds for the crown were Louise Parker and Gloria Hurlock.

MOST ORIGINAL

It's no secret who the most original of our Seniors is: Ginny Pitts is anyone's bet. Marge Gardner of Tower Formal decorating fame and Jean O'Brien are right in there, too!

BEST ATHLETE

You've seen her on skis, behind a tennis racket, on the basketball floor — our top athlete, Helen Richardson. Pat Mattison and Peg Coulson complete a practically undefeatable team.

MOST POPULAR

Again our lovely Jan Smith takes the cake as she walks away with the popularity poll; and following closely are Ginny Pitts and Anne Stanley, of Whitman House.

BEST SCHOLAR

After reading the Honor Roll for our class, there can be no question as to the best scholar. It's Jean McKenzie, with Alice McGinty and Barbara Titcomb, neck and neck behind her.

MOST VERSATILE

And this is as it should be, for Ginny Pitts certainly is versatile, as are her classmates, Gloria Hurlock and Jean O'Brien.

MOST ENTHUSIASTIC

Miss Pitts again, this time with the nomination of Most Enthusiastic. But Betty Cooper and Helen Richardson haven't let her have more than her full share of enthusiasm.

BEST DANCER

Houghton Hall with another first, as Beverly Robertson wins the dancing cup, partnered ably with the Lambertson twins and Jean Batson. It must have been a Quadrille contest.

MOST LIKELY TO SUCCEED

Here we find class president Anne Stanley most likely to succeed. She is seconded by Jean O'Brien and Alice McGinty.

BEST DRESSED

Everyone knows that Louise Kerr plies a neat needle, so it seems only "fitting" that she should be voted the best dressed. Peggy Coulson and Jean O'Brien are in close succession — and no "reet pleats," either.

SENIOR CLASS WILL

We, the class of '43, allegedly sound in mind and memory, having lived, laughed, and learned at Westbrook these two years, do hereby solemnly swear this to be our last will and testament in the year, 1943:

When the class of '43 moves on, "the heartache and the thousand natural shocks that flesh is heir to" become the property of the 1944 class. Among the shocks (natural and otherwise) is the fiery top-knot that Lou Keay leaves to McGint, Jr.

Just so, Jo Jordan hands down her journalistic heritage to Shirley Barker.

Priscilla Nichols COULD leave her passion for cheese and piccallili sandwiches to the cafe menu, but frankly, we'd rather she took it with her.

Charlotte Root leaves Gildersleeve, Helen Trent, and Mr. "Fox" (that Bowdoin man) to the mercies of anyone with a sense of humor.

And, to Dodie Richardson, the gal with those flashy slacks, Virginia Pitts wills that inevitable "line" and all comedy parts in future Masque plays.

Helen Richardson wills her skiis, winter tan, and North Conway's snowy slopes to Eleanor Deering, who's following in her ski tracks.

Jean O'Brien leaves — with a can of OVALTINE for a health farm where she can go on writing and writing, while recuperating from those nerve-racking sessions with the TOWER Board.

"Imagination," says Bobbie MacLean, "is a bother." So she leaves it — flat.

The "bug-that-made-McKenzie-famous" finds a new home in Rita Serlick.

Cynthia Binford leaves behind her "shining morning face" in the form of an endowment for any bright young thing to move into.

Frances Jenkinson leaves "Carmichael" (Whitman's raccoon coat) for any frail Freshman who can't take Maine's wintry winds.

Members of the eminent P. B. club turn their charter over to all coming Epicureans. The password — in case you're hungry — is "camel pie."

Jane Shannon wills her book, *How to Make First Class in Two Minutes*, to the library reserve shelf for all Freshman who haven't yet acquired the art.

A certain group of Day Students at last relinquishes its lease on the second table in the cafe. Prospective tenants are urged to keep in trim this summer for the inevitable mad dash next fall will bring.

Alice McGinty has come to the fore again — this time in the interests of science. She leaves her pet cat stretched on a slab in the lab. Ah, progress!

Alva Farrow won't part with her pilot's license, but she WILL leave a reasonable facsimile for any lovers-of-the-upper-region to rise to.

Louise Frost went over with a big "bang," and it begins to look as though a few Freshmen admire her technique enough to adopt it.

Eleanor Fuller hands her gusto on to Jane Manuel.

Janet Smith leaves her yen for rain, dungarees, and poetry to any budding Socrates who likes to stop to philosophize.

To all future upperclassmen, Louise Parker, Constance Brown, and Beverly Robertson bequeath the art of keeping blonde hair blonde *sans* H₂O₂ (Guess what.)

Attention all exponents of Omar Khayam: The Lodge leaves a jug of frozen cider and a loaf of stale bread to thee.

And we, the Senior class, in parting, leave our genuine appreciation for the memories, friendships, and fun made at Westbrook, and do hereby bequeath our spirit of loyalty to all traditions and ideals to the class of '44.



CLASS PROPHECY

At a certain time in life, it behooves us all to look into the future — to tear apart the enshrouding veil, as it were. We in the tower wrapped our hair in the nearest Turkish towel and polished up an empty goldfish bowl. A few magic words, some mystic passes — and presto — the fog is clearing.

We see Cellie Parker leading a little goblet as she waits for her admiral to come home from the sea. Jean Jordan is growing gray as she types out David McCord's latest poetry. On the hazy outer fringes we find Marie Zukunft paddling through the English Channel carolling "It Ain't Necessarily So" as she goes. Beside her is an unidentified mermaid—oops! Guess the bowl wasn't empty.

Spiritual static clouds our talented globe — the mists close in — our abracadabra fails — but suddenly all is clear again as Alva "Earheart" Farrow zooms through the stratosphere on her way to the moon in the latest of rocket-ships. We decide the view from the moon will offer a better perspective so we join her.

Looking down on the tattered old World, we see McGint setting Oxford on its ears as she takes an unheard of Ph. D. in Cynicism. In the nearby Atlantic our rusty telescope (vapors on the moon) spots Vice-Admiral Ginny Pitts of the WAVES leading a convoy to the Zulu Islands to put down a local insurrection. Among the WAAC's on board is Mabel Eaton. Jan Smith and Penny Anton, starched and competent, are holding the heads of several sea-sick sailors along the rail.

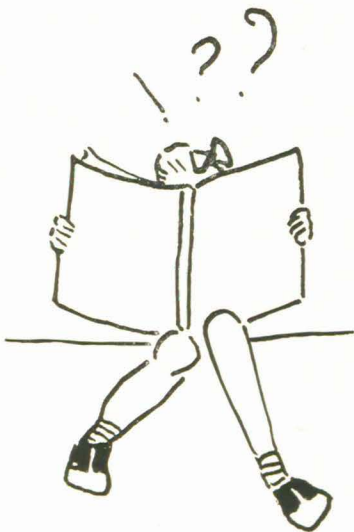
In Paris the spotlight illuminates Lou Kerr who successfully heads the fields of coutouriers. Across the line in Switzerland, Olive Moody and five little red-heads are shooting up and down the Matterhorn on a fifteen-foot pair of skiis.

At Heidelberg we see alumnae Louise Keay, Edith Gregory, Dot Polley, and Inez Morrill furiously vivisecting as they work on their thesis for the highest of medical degrees. Back in the U. S. A., at Kirksville, Missouri, Dr. Jane Marshall is busily massaging wrinkles from the brows of tired osteopathic students. Broadway claims Kay Woodbury, Peg Coulson, Frankie Jenkinson, and Peg Morris, billed as the Fritillary (butterflies to you) Four, who are leading the latest Band Box Revue.

Irate spirits traced us to the moon, so back to Earth we go to try another form of piercing the future. Clasped hands in a cabalistic circle — a pinch of star-dust on the fire — and Betty Cooper bounds into view chasing down the latest news flash. Close behind her is Bobbie MacLean in quest of an interview with the top glamour gal of the year. Mavis Gorton trots by on her way to Pier 60 to shove off for South America.

We leave our one goldfish to his endless gyrations, send our Turkish turbans out to the laundry, and creep back to our poetry. Life was fun, wasn't it?

F
R
E
S
H
M
E
N





FRESHMAN CLASS OFFICERS

Standing, left to right: Lorraine Hatcher, Anita Wass, Ann Kimball, Marjorie Wheeler, Elizabeth Burns.

Seated, left to right: Brenda Pattison, Jeanine Beranger, Dorothy Richardson, Nancy Price, Patricia Shaw.

Freshman Class History

THE CLASS OF 1944

They want to be twice as good, these 198 Freshmen, so to stress their point, they had co-presidents this year.

With matriculation Monday, September 14, classes beginning the next Friday, and the annual President's tea in Hersey drawing room, September 20, they stepped quickly into their new life at Westbrook.

Those chosen to lead the class were: Presidents, Nancy Price and Dorothy Richardson; Contact Secretary, Jeanine Beranger; Recording Secretary, Brenda Pattison; Day Treasurer, Marjorie Wheeler; Resident Treasurer, Patricia Shaw. On the Social Committee were: Lorraine Hatcher and Elizabeth Burns; the Finance Committee, Mary Dearbon and Anita Wass; and the Student Council, Charlotte Best and Mary Jean Little.

Nancy Brabant was the only one to represent her class as an officer in the Riding Club; she was Vice President.

The Masque and Candle Club had Jane Butcher as Vice President and Nancy Price as Secretary.

Eleanor Elting served as Treasurer of the Secretarial Science Club, and Helen Fletcher as Vice President.

The Westbrook Athletic Association started its first and very successful year with several Freshmen in office. Carolyn Goodwin was the Secretary, Louise Davidson was Treasurer, and as Freshmen Leaders there was Eleanor Goodwin, Carolyn's twin, and Nancy Price.

Another new project, not only started by a Freshman, but all officers are Freshmen. It is the Ski Club with Eleanor Deering, President; Anita Wass, Committee head; Carolyn Goodwin, Vice President, and Candace Thompson as Secretary-Treasurer.

A rather war-rationed year didn't hinder the ambitious class, for they not only had vic dances and splash parties, but obtained the hitherto unpermitted privilege of slacks and radios for daily use.

Hail to these Freshmen, and may they hold their standards just as high when they step into the role of Seniors.

Freshman Class

★

ALEXANDER, EMILY V.	Bath, Maine
ANTHONY, BARBARA E.	Portsmouth, Rhode Island
ARMSTRONG, JANE M.	Springfield, Massachusetts
BANKS, BARBARA A.	Biddeford, Maine
BARDEN, BEVERLY E.	Gorham, Maine
BARKER, SHIRLEY L.	Worcester, Massachusetts
BARLOW, HELEN J.	Lewiston, Maine
BEACH, HOPE M.	Newtonville, Massachusetts
BENOIT, PATRICIA A.	Portland, Maine
BERANGER, JEANINE M.	Winchester, Massachusetts
BERUBÉ, GEORGIANA	Belfast, Maine
BEST, CHARLOTTE S.	Providence, Rhode Island
BLOCK, MERNA	Worcester, Massachusetts
BOLTON, DOROTHY R.	Gorham, Maine
BOULOS, ELIZABETH J.	Portland, Maine
BRABANT, NANCY A.	Tuckahoe, New York
BRAGDON, MARJORIE A.	Cumberland Mills, Maine
BRONSON, BARBARA J.	Lancaster, New Hampshire
BROWN, JOYCE J.	Presque Isle, Maine
BROWN, TERRY E.	Clinton, Maine
BURNS, H. ELIZABETH	Bangor, Maine
BURPEE, BEVERLY J.	Eastport, Maine
BUTCHER, JANE E.	Needham, Massachusetts
BUTCHER, RUTH S.	Needham, Massachusetts
CALDER, ELISABETH A.	West Medford, Massachusetts
CARBEE, SHIRLEY	Melrose Highlands, Mass.
CARTER, JANET R.	Andover, Massachusetts
CHARLES, LUCILLE H.	Portland, Maine
CHASE, ESTHER B.	Sunapee, New Hampshire
CHRISTIE, JANET G.	Wollaston, Massachusetts
CINAMON, SUZANNE E.	Portland, Maine
COBLEIGH, GLORIA	Winchendon, Massachusetts
COLLEY, ROSALIND A.	Barrington, Rhode Island
CONNORS, CONSTANCE M.	Farmington, Maine
COOPER, ELIZABETH S.	South Portland, Maine
COOPER, M. VIRGINIA	Winchester, Massachusetts
COPELAND, VIRGINIA	North Attleboro, Massachusetts
COYNE, PATRICIA L.	Framingham, Massachusetts
CREDE, LOIS E.	Lowell, Massachusetts
CROCKETT, MARGARET J.	Portland, Maine
CURRAN, ELIZABETH J.	Portland, Maine
CURTIS, PATRICIA I.	Portland, Maine
CUTTER, PHYLLIS	Springfield, Massachusetts

DALRYMPLE, ESTHER R.	Methuen, Massachusetts
DAVIDSON, LOUISE	Hampton, New Hampshire
DEERING, ELEANOR B.	Portland, Maine
DEMARINO, CAMELLA L.	South Portland, Maine
DENISON, H. JEAN	Harrison, Maine
DICK, EDITH M.	Brunswick, Maine
DODGE, HARRIET L.	Portland, Maine
DOHERTY, BARBARA A.	Brockton, Massachusetts
DOW, HARRIET V.	Cape Elizabeth, Maine
DOW, VIRGINIA E.	Worcester, Massachusetts
DUNBAR, DAPHNE	Wellesley, Massachusetts
EATON, CHARLOTTE S.	Andover, Massachusetts
EATON, DOROTHY E.	Portland, Maine
EILERS, DOROTHY B.	Bronxville, New York
ELTING, ELEANOR R.	Pittsfield, Massachusetts
FAIRCHILD, BEBITA E.	New York, New York
FITZGERALD, ELIZABETH T.	Portland, Maine
FLADGER, HAZEL H.	Saugus, Massachusetts
FLETCHER, HELEN H.	Ayer, Massachusetts
FLINT, CHARLOTTE	Bridgton, Maine
FOSSA, CONSTANCE M.	Nashua, New Hampshire
FOSSETT, NATHALEE A.	Union, Maine
FOSTER, CLAIRE E.	Bar Harbor, Maine
FRISBIE, JANE	Portland, Maine
FULLER, ANNETTE C.	Bar Harbor, Maine
GEORGE, MARION R.	Claremont, New Hampshire
GOLENPAUL, TYLDA	New Bedford, Massachusetts
GOODING, JEAN C.	Longmeadow, Massachusetts
GOODMAN, RUTH E.	Providence, Rhode Island
GOODWIN, CAROLYN C.	Bangor, Maine
GOODWIN, ELEANOR P.	Bangor, Maine
GOODWIN, MILDRED F.	South Portland, Maine
GORMAN, ELIZABETH R.	Bethel, Maine
GREENE, MARION G.	Framingham, Massachusetts
GREENSTONE, CHARLOTTE B.	Portland, Maine
GRENIER, PAULINE E.	Madison, Maine
HALBERTS, PATRICIA M.	Portland, Maine
HALL, MARILYN	Elmwood, Massachusetts
HARRIS, EDITH H.	Portland, Maine
HARVEY, DOROTHY M.	Portland, Maine
HATCHER, LORRAINE M.	Portland, Maine
HATHAWAY, PAULA H.	Taunton, Massachusetts
HAYDEN, PATRICIA B.	Wilton, Maine
HICKEY, MARY E.	Milton, Massachusetts
HIGGINS, BARBARA R.	Carmel, Maine
HILL, POLLY J.	Holyoke, Massachusetts
HILL, PRISCILLA M.	Swampscott, Massachusetts

HIRST, BARBARA A.	West Newton, Massachusetts
HODGKINS, ESTHER A.	Bar Harbor, Maine
HOFFMAN, JEANETTE	Dorchester, Massachusetts
HOLLAND, LOIS W.	Hinsdale, New Hampshire
HOMANS, GERTRUDE M.	Bangor, Maine
HOWE, M. BARBARA	Swampscott, Massachusetts
HUDSON, LOIS W.	Freeport, Maine
HUMPHREY, LOUISE	Needham, Massachusetts
HUMPHREYS, CONSTANCE H.	Madison, Maine
HUTCHINSON, A. EDWINA	Portland, Maine
JACK, ADELAIDE M.	Hollis Center, Maine
JANES, MIRIAM E.	Worcester, Massachusetts
JOHNSON, ELAINE A.	South Portland, Maine
JONES, CONSTANCE	Brookline, Massachusetts
JORDAN, GLORIA A.	Cape Elizabeth, Maine
KEENE, JOAN E.	Auburn, Maine
KIMBALL, ANN	Portland, Maine
KIMBALL, MARY C.	Dover-Foxcroft, Maine
KIMBALL, PAULINE C.	Concord, New Hampshire
KINSMAN, JUNE D.	Lynn, Massachusetts
LAMB, OLIVE P.	Camden, Maine
LAW, EDITH E.	Wallingford, Connecticut
LIBBEY, BARBARA F.	Northboro, Massachusetts
LINDBERG, BARBARA J.	Wellesley, Massachusetts
LISTER, BARBARA E.	North Providence, Rhode Island
LITTLE, MARY-JEAN T.	Portland, Maine
LOBELLO, JANET M.	Northampton, Massachusetts
LOWTHER, BARBARA	Providence, Rhode Island
MCGINTY, FRANCES C.	South Portland, Maine
MANUEL, M. JANE	Durham, New Hampshire
MARSTON, M. JANE	Skowhegan, Maine
MARTE, MARJORIE	Manchester, Connecticut
MERRILL, RUTH L.	Skowhegan, Maine
MILLS, BEVERLY F.	Brookline, Massachusetts
MULLEN, MARGARET C.	Northfield, Vermont
MULLINS, PRISCILLA A.	Portland, Maine
MYOTT, ANNETTE E.	Portland, Maine
NASH, CAROLINE	Providence, Rhode Island
OLESEN, ANNA E.	Portland, Maine
PADLUSKY, BETTY	Plymouth, Massachusetts
PAGE, JEAN M.	Melrose, Massachusetts
PARTRIDGE, ADELAIDE J.	Winchester, Massachusetts
PARTRIDGE, RACHEL	Augusta, Maine
PATTISON, BRENDA S.	Winchester, Massachusetts
PENDLETON, KATHLEEN V.	Dark Harbor, Maine
PHILBRICK, NORMA V.	Rockland, Maine
PIERCE, DOROTHY M.	Portland, Maine

POLLITZ, E. JOYCE	Reading, Massachusetts
PORTER, SALLY	South Hamilton, Massachusetts
POYNTER, PAULINE E.	Melrose, Massachusetts
PRICE, NANCY J.	Worcester, Massachusetts
QUINN, CONSTANCE	Portland, Maine
RABINOVITZ, DOROTHY	Chelsea, Massachusetts
RICHARDSON, DOROTHY P.	Portland, Maine
ROONEY, JEAN L.	North Brookfield, Massachusetts
ROSENBLOOM, SYLVIA	South Portland, Maine
ROSS, JOAN B.	Quincy, Massachusetts
RUSSELL, SHIRLEY R.	Portland, Maine
SERLICK, RITA	Portland, Maine
SHAW, PATRICIA A.	Putnam, Connecticut
SHEELEY, JOAN F.	Portland, Maine
SHELLEY, LUCY N.	Fitchburg, Massachusetts
SIFF, MYRA A.	Newton, Massachusetts
SILVERMAN, HILDA E.	Portland, Maine
SLIPP, ELAINE R.	Portland, Maine
SMITH, BARBARA E.	Portland, Maine
SMITH, DOROTHY E.	South Portland, Maine
SMITH, SHIRLEY E.	Spencer, Massachusetts
STANLEY, JEANNETTE	Cumberland Center, Maine
STHEN, G. WILHELMINA	Portland, Maine
SZCZEPANKOWSKI, DOROTHY M.	Danvers, Massachusetts
TAYLOR, BETTE J.	Pelham, New York
THACHER, ELISABETH	Amherst, Massachusetts
THAYER, BARBARA R.	Searsport, Maine
THOMPSON, CANDACE A.	Wolfeboro, New Hampshire
THOMPSON, MARJORIE E.	Beverly, Massachusetts
TOWNE, PRISCILLA A.	Newport, Vermont
TRUMPOLD, SHIRLEY A.	Methuen, Massachusetts
TUCKER, GENEVIEVE M.	Cape Elizabeth, Maine
TUELL, NANCY E.	Mansfield, Massachusetts
TUKEY, ELIZABETH W.	Portland, Maine
TURESKY, SYLVIA	Portland, Maine
ULPTS, URSULA T. A.	Portland, Maine
WALMSLEY, JEAN P.	Portland, Maine
WALSH, MARY J.	Portland, Maine
WARD, THURLEY M.	Limestone, Maine
WASS, ANITA R.	South Hamilton, Massachusetts
WEEKS, MARY	Fryeburg, Maine
WENDLER, CECILIA E.	Babylon, New York
WENTWORTH, LENA M.	Fryeburg, Maine
WHEELER, MARJORIE F.	Portland, Maine
WHITNEY, GLADYS R.	Portland, Maine
WILLOUGHBY, JOYCE E.	Granby, Connecticut
WORTHING, JOYCE	South Portland, Maine

O
R
G
A
N
I
Z
A
T
I
O
N
S





WESTBROOK JUNIOR COLLEGE NEWS

Left to right: Elizabeth Cooper, Alexandria Williams, Alice McGinty.

Westbrook Junior College NEWS

Last year's News style and make-up were continued this year, with Alice McGinty carrying on as Editor-in-Chief. The Freshman class provided some outstanding reporters, with Shirley Barker and Rita Serlick leading the field.

Advertising was garnered again by Alex Williams, while circulation-head was Betty Cooper. Innovation in the latter department was the issuing of extra copies to aid the alumnae dues collection.

An informal dance in March proved the journalists an able group of entertainers. Alva Farrow was chairman of the affair, which was a high spot of the social calendar.



"THE MASQUE AND CANDLE"

Rear, left to right: Nancy Price, Alva Farrow, Shirley Caplan.

Front, left to right: Virginia Pitts, Jane Butcher

"Masque and Candle"

"The play's the thing" might well be the motto of the "Masque and Candle" whose members assemble bi-weekly to discuss various aspects of the theatre and to plan future performances to be given by the club.

Early in the year the Freshman members were initiated into the club by proving their talent in monologues, readings, and skits. Virginia Pitts, president, gave a cutting from "The Women." Guest speakers included Miss Katherine Shaw, WAAC, who gave an interesting talk, and answered questions concerning the organization's interest in recreation and dramatics. Mrs. Frank Douglas from WGAN spoke on her experiences with the radio station, while Miss Jean Proctor of our faculty discussed modern play writers. Miss Jane Phinney Harlow was the entertainer at the annual banquet. The "Masque and Candle" assisted with the defense stamps and bond drive.

In accordance with its custom for the past few years, the "Masque and Candle" presented two dramatic works this year under the able supervision and direction of Miss Marguerite Shaw and Miss Phyllis McCann.

In the fall, three one-act plays were presented: "Over the Tea Cups," by Percival Wilde; "The Woman in the Freight Car," by Essex Dane; and "The Skin Game," by Marion L. Bishop. These plays were repeated for the women at the Woodfords' Club and for the Eastern Star and Masonic Lodge at Yarmouth.

The major production of the year was the three-act play which was presented on May 13 and 14, "Brief Music."

Student Council

This year the Student Council, led by President Louise Frost, comprised some of the ablest members of the student body, among them Janet Smith, Betsey King, Charlotte Best, and Mary Jane Little.

In the war effort department this year, the organization sponsored the Victory Book Campaign, collecting over eight hundred books for the armed forces.

Open forums were inaugurated this year in an effort to have student problems brought to the fore and, as a direct result of this, slacks were permitted during classes for the first time this winter.

Secretarial Science Club

Discussing jobs, business problems, and promoting efficiency in the business world join in the purpose of Westbrook Junior College's Secretarial Club, and a worthy one, too.

This year, under the able direction of Barbara Smith, the club has fulfilled its purpose, and has provided its members with valuable tips in the secretarial field.

Other officers were: Helen Fletcher, Vice President; Carolyn Spence, Treasurer; Eleanor Elting, Secretary. An executive committee, namely, Rachel Partridge, Jane Butcher, and Helen Copeland, kept the club running smoothly, and have ably paved the way for new members to join one of the school's growing organizations.

Miss Janet Smith, advisor, is to be credited for her guidance.

Student Christian Association

In its initial stages, the Student Christian Association has tried to exert its influence upon the students of Westbrook. Perhaps the accomplishments of this organization have not been spectacular but its worthwhile efforts of creating a charitable attitude toward all have made the "SCA" an association of which to be proud. The giving of Thanksgiving baskets, raising money to clothe the needy, assisting in the war effort by the "Bond Drive" and sponsoring a speaker on Farm Work, student participation in offering the blessing, and vesper services as a means of group communion, seem to sum up the purpose of the Student Christian Association.

International Relations Club

Naturally, the war has stimulated our interest in the affairs of the whole world. The International Relations Club has helped us to regard the situation with intelligence.

This year we were well represented at the New England Conference of International Clubs at Colby Junior College, November 5 and 6, by Alice McGinty and Rita Serlick. The club's officers were: President, Jane Marshall; Notice Poster, Terry Brown; Treasurer, Sally Porter; and Program Chairman, Alice McGinty. Dean Kimball is the faculty advisor.

Most of the meetings were open to the entire student body. The Program Chairman provided an excellent group of guest speakers which included Miss Charity Cannon, who spoke on Mexico, Mr. Edwin Young who discussed Inflation, and Lt. Beth MacArthur of the WAAC. The Club sponsored Mr. Harrison Lakin in a series of six informative lectures. It also set up an excellent library exhibit on South America.

Psychology Group

Under the leadership of Mr. Stephen R. Deane, a group of students interested in psychology, had their first meeting in March. The business of the meeting was to elect officers, Marie Zukunft was chosen President. Other officers included Jane Marshall, Secretary and Treasurer; and Jean McKenzie as Chairman of the Program Committee.

Their first speaker was Mr. Sven Hultman, a spiritualist, and the second was Mr. Grube Cornish from the State Home for Boys. His subject was based on Juvenile Delinquency.

Other speakers are scheduled during the latter part of the semester.

Westbrook Athletic Association

Something new and different came into the W. A. A. this year. Two teams, Maroon and Gray, were organized, composed of every member of the student body. The officers of the Board, managers, and team leaders were elected by popular vote in the fall. Active competition in every sport made the year full of interesting athletic contests, such as faculty-Senior, and faculty-student basketball games, and inter-house competition in all sports. Another innovation was the very competent handling of the Winter Carnival by the W. A. A. Executive Board. The year was climaxed by an outdoor picnic-banquet at the fireplace, where awards for outstanding ability in sports were presented.



W. A. A. AND WANAKEA RIDING CLUB

Rear row, left to right: Nancy Price, Louise Davidson, Carolyn Williams, Carolyn Goodwin, Margaret Coulson, Eleanor Goodwin.

Second row, left to right: Virginia Pitts, Joanne Jordan.

Front row, left to right: Helen Richardson, Elizabeth Cooper, Constance Brown.

Wanakea Riding Club

In spite of gas shortages, rationing, and a long, hard winter, the riding club of Westbrook Junior College saw through another successful year of fun, companionship, and good sport.

In the early fall, supper meetings began, officers were elected, and a Portland Horse Show, and Tomlinson's Stable Show high-lighted the season. Later, brisk trail rides were enjoyed by beginning, and intermediate riders.

In coöperation with the W. A. A., the members of the Wanakea Riding Club were hostesses at the annual February Winter Carnival at Tomlinson's where riding, ski-joring, tobogganing, sleigh riding, and a delicious buffet luncheon were enjoyed. Two bridge parties were later sponsored by the club.

In March, the traditionary tea for Portland's high school riding clubs was held, and colored moving pictures of previous rides and horse shows were shown, as well as the new film of this year's carnival.

In later spring, sunset rides, a trail ride for advanced riders and a morning ride were held. With graduation came the big Horse Show to top off the riding season. Dr. Proctor awarded medals to the eight members of the Drill Team, and the Tomlinson Award for Horsemanship was given to the Senior showing the greatest progress during the year.



GLEE CLUB

Rear, left to right: Pauline Spencer, Helen Goddard, Joan Cleveland, Nornie Johnson.

Front, left to right: Janet Smith, Louise Parker.

Glee Club

This year has brought the reality of limited transportation very close to the Glee Club. In spite of it, we have enjoyed presenting a special Christmas Chapel; a Lenten service at St. Luke's Cathedral; two concerts at the Rotary and Portland Clubs and our joint spring concert with Harvard.

The club has especially stressed the Friday Chapel singing, with choir robes adding an atmosphere of dignity to the sacred music.

Special recognition should be extended to Miss Phyllis Reed for her fine help as accompanist and to Ruth Mooers, Marie Zukunft, Jeanette Stanley and Suzette LeBourdais for their solo work.

To Director Rupert Neily goes deep gratitude for fine guidance and real companionship.

C
A
M
P
U
S

H
O
U
S
E
S



Back row, left to right: Lois Berlepsch, Miss Dorothy Wolstenholme, Elizabeth Dewey, Priscilla Sargent, Marjorie Dennis.

Second row, left to right: Priscilla Nichols, Miss Jeanne Morneault, Dorothy Chynoweth, Marjorie Miner.

Front row, left to right: Phyllis Lawrence, Ida Mae Peverly, Arlene Bickford, Virginia Gamwell, Barbara Titcomb, Nornie Johnson.

The Lodge

The thirteen members of the Lodge — charges of Miss Morneault and Miss Wolstenholme — are one of the most versatile and fun-loving groups on campus. Each girl was active in the W. A. A. and S. C. A., and every other W. J. C. organization finds at least one loyal supporter in the Lodge. Phyl Lawrence and Ida Mae Peverley were on the staff of the "W. J. C. News," and Barb Titcomb represented our scholastic side by being named to the honor list.

The Lodge won honorable mention for originality with an illuminated alarm clock, our contribution to the snow sculpture contest at Winter Carnival. Our zest for activity was apparent in the numbers of girls who participated in volunteer war work, and several girls took the Red Cross Home Nursing course.

From the bustle of activity with parties and business galore, you'll be certain that

"Where there's fun, they're always in it
Never still for half a minute."



Rear row, left to right: Jo-anne Stewart, Miss Marguerite Shaw, Miss Jean Proctor.

Second row, left to right: Barbara Smith, Marcelle Parker, Mavis Gorton, Carolyn Spence, Edwina Adams, Pauline York.

Front row, left to right: Rosalind Colley, Joyce McLean, Olive Moody, June Merrill, Mary Elizabeth Hickey, Suzette LeBourdais.

Johnson House

Under the supervision of Miss Proctor and Miss Shaw, twelve of us gathered together in Johnson House. However, in October, Jo Stewart got the patriotic urge and left to join the WAVES.

Our labors on "Esky," Johnson's contribution to the snow sculpture contest at the winter carnival, proved highly successful, and won us honorable mention. The same weekend Barb Smith appeared all decked out in a new diamond.

Although we're few in number, we're well represented in campus activities. Polly York, Suzette LeBourdais, Mavis Gorton and Carolyn Spence help keep up the tradition of the Glee Club; Barbara Smith is president of the Secretarial Science Club; and Olive Moody is on the "W. J. C. News" staff. Several of us are members of the Dramatic Club.

As June approaches we leave this wish with next year's inhabitants of Johnson: May your year here be as pleasant as ours has been.



Rear row, left to right: Frances Jenkinson, Marjorie Morris, Jean Batson, Margaret Coulson, Joyce Waldman, Hope Ward, Josephine Wyman.

Second row, left to right: Margaret Jones, Dorothy Loveland, Mary Stevens, Phyllis Barker, Anne Stanley.

Third row, left to right: Kathryn Woodbury, Barbara Carnes, Penelope Anton, Shirley Nunes, Ruth Sayre.

Fourth row, left to right: Louise Frost, Inez Morrill.

Front row, left to right: Miss Patty Smyth, Joanne Jordan, Miss Hazel Lundy, Norma Clifford, Virginia Pitts.

Whitman House

"Life, liberty, and the pursuit of happiness" was the motto that has made "Whitman" this year. Our appreciation to Miss Lundy and Miss Smyth will continue throughout the years.

Twenty-one girls working, playing, and living together has made this a big year in the lives of each one of us. We are proud to have a versatile group that has done much. We boast the class president — Anne Stanley, the Dramatic Club president — Virginia Pitts, and the Student Council president — Louise Frost. The Glee Club and the Riding Club are also well represented.

To our home of '42 and '43 we say a fond farewell.



Rear, left to right: Patricia Mattison, Mildred Robichaud, Mabel Eaton, Miss Eileen Stevens, Miss Doris Bean.
 Second row, left to right: Victoria Paras, Nancy Murphy, Barbara Walters, Marjorie Jensen, Elizabeth Mewer.
 Third row, left to right: Roberta MacLean, Marie Bradley, Norma Fossett.
 Front row, left to right: Frances Lambertson, Dorothy Gibbs, Marilyn Millett, Phyllis Lambertson.

Bell House

The twenty girls of Bell House have had fun this year. Birthdays and parties have all been properly celebrated. Miss Bean and Miss Stevens, house mothers, have taken good care of their 14 Seniors and 5 Freshmen.

Lois Holland, Nan Shelley and Marjorie Jensen have all contributed their bit toward making the Glee Club what it is. Terry Brown, Patricia Mattison, and Betty Mewer were representative of the skiing population of the house.

The equestrians in the house were Marie Bradley, Marilyn Milette, Terry Brown, Betty Mewer, and Nan Shelley.

Patricia Mattison served as chairman for the Freshman Tea Dance.

Nancy Murphy was the Catholic representative in the S. C. A. and she was also the communicating secretary for the Senior Class.

In the snow sculpting contest, held during the Winter Carnival, Bell House was given honorable mention for detail on their miniature of the campus.



Rear row, left to right: Frances Rand, Patricia Darling, Gertrude Dunklee, Louise Parker, Helen Gahm, Constance Brown, Janet Smith, Edith Gordon.

Second row, left to right: Alva Farrow, Lucille Ralph, Marjorie Gardner, Elaine Patterson, Shirley Caplan.

Third row, left to right: Carolyn Williams, Pauline Spencer, Dorothy Corbo, Helen Richardson, Miss Elizabeth Carpenter, Beverly Robertson, Dorothy Macdonald, Helen Watkins.

Front row, left to right: Elizabeth Cooper, Helen Goddard, Jane Shannon, Charlotte Root, Miss Phyllis Reed, Marcia Lounsbury, Elsa Goodman.

Houghton Hall

Under the supervision of Miss Reed and Miss Carpenter, Houghton's twenty-eight dwellers were in many activities on campus this year. Janet Smith was president of the Glee Club, plus being the president of the new Student Christian Association. Louise Parker and Polly Spencer assisted Janet in the Glee Club. Constance Brown was the Senior Class treasurer. Four of Houghton's leaders were chosen as candidates for Carnival Queen, with Janet Smith receiving the honor. Tally Williams was president of the house with an able committee. Many girls were on the "W. J. C. News" Staff; others were members of the Masque and Candle with Bev Robertson, Louise Parker, and Janet Smith carrying the leading roles. Also, some served on the TOWER Board and various other organizations.

Socially, Houghton enjoyed an eventful hayride in the Fall, several skiing trips in the Winter plus many informal gatherings during the course of the year.



*Rear row, left to right: Mr. and Mrs. Donald Fuller.
Second row, left to right: Flora Davis, Natalie Small, Elsie Liljeholm.
Third row, left to right: Edith Gregory, Helen Copeland, June MacFarland.
Fourth row, left to right: Frances Lempert, Louise Keay.
Front row, left to right: Dorothy Polley, Ruth Wormhood, Jane Oakes.*

Deering House

This year, Deering House, with house father and mother, Mr. and Mrs. Donald Fuller, opened its doors not only to Seniors but to ten Freshmen as well.

It played a prominent part in Westbrook's activities for it was represented in the Masque and Candle, the Glee Club, the Wanakea Riding Club, the Red Cross, the International Relations Club, Home Nursing, the Secretarial Science Club, and the Psychology Group.

A new feature of the Winter Carnival this year was snow sculpturing. Deering's contribution to this gala Fete was a mermaid. We were proud at that time to have two girls win ribbons at the skating exhibitions. These girls were Olive Lamb and Jean Walmsley, members of the Freshman class.

Proving that both upper and lower classes can live together in perfect harmony, Deering's girls are a fun-loving and versatile group.

F
E
A
T
U
R
E
S



Literary Contest Winners

THE COURT OF NEW YEAR'S EVE

JEAN OBRION, January 4, 1943

This poem, written by Jean O'Brien, was awarded first place in THE TOWER poetry contest.

THE POET:

Dear Reader, hemmed by war's walls to voy-
aging on maps,
Attend, see, read, venture with me to a court
some three centuries ago;
Stand in the ragged folds of dead time and
watch dead pageants;
Talk with men who gather here at a court
bright in its time
With men who made books and men who were
books;
Bright now with those — and others.
Some men say, "At the New Year, when the
hands of the clock
Stand poised on the brink of eternity for small
seconds
And hang between the coming out and going
in;
"Then," men say, "the shades will congregate
And you may see those who were, and those
Who are, and those who never were, or
Who never will be." Will you come
And talk with them and me?

I

prof i met a cockroach the other day
he is a cousin to archy the friend of don mar-
quis
his name is james james
i said to him what do you
think of will shakespeare
and what i asked him
is your opinion on ed spenser
well said james who is an
oxford roach with an m a he
ate right off the wall of the warden
of balliol i never knew him
very well you see he was a cambridge
man and we of oxford thought
little more than nothing of those
cambridge wits james was
talking about spenser i think
never mind spenser now i said
what about shakespeare i said
james sneered at me you modern
so called poets he scoffed not only
can you not write good verse
but you can't stick to one subject
at a time why even my cousin archy

when he was a verse libre bard could
write better poetry than the stuff
you pretend to prof do you
blame me if i left james
sneering in the corner and went
and asked spenser what he thought
about will shakespeare i really
wanted to know about shakespeare
anyhow

signed

jean

II

THE POET:

Spenser, Spenser, tell me true —
What did Shakespeare mean to you?
Can your maggot-ridden mind
Any worth in Shakespeare find?
Did he culminate your writing
By a lover's pen benighting?
Can you, with all constancy,
Celebrate his brilliancy?

SPENSER:

An Amoretti to my love I wrote:
In flowing verse I sang my lady's praise:
Her ruby lips with care I did denote,
And told her how she lighted all my days.
But Shakespeare, may a storm o'ercloud his
ways,
Cared not a whit for such beloved conceit;
Penn'd sonnets which true poesy betrays,
Defiling all that lovers would repeat,
And stopp'd and sneer'd to see my poor defeat.

III

THE POET:

Sage, your red-rimmed eyes have watched the
world
These several thousand years or more.
Deny me not — I know you've walked
The garden with that great master, Shakes-
peare;
And turned a pretty verse or two
With Spenser; or quaffed an old-and-mild
With Jonson — and smashed the cup
Among the roses. What was he
Who wrought in intricate ways and by devious
means:
That glorious bard?

KHAYYAM:

Rotting two thousand Years among the graves,
I left the ways of Life to lesser Knaves
And thought upon the Grape.
Child, what care I how the Sonneteer behaves?

IV

prof i got tired of
asking what everybody
thought about shakespeare
i went back and found
james at least he talks
on almost modern version
of english james i asked
him how would you like
to come along with me
and interview a few old
bones how old asked
james don t i said
worry they re well
aged most of them are
four hundred years old
at least and some may
be older it all depends
who we run into on
our trip are you coming
yes said james so i put
him in my pocket and
off we went

signed

jean

V

THE POET:

Having sopped the doubled-headed Cerberus
And crossed the seven rivers and the Elysian
Fields,
I came at last to that dim aftermath called
Hell
To search these misty faces in hopes to chance
Upon the worthy Dr. Faustus!

FAUSTUS:

Get hence, child; seek not to disturb
My all-too-restless rest. Wouldst
Not thou leave my musty bones
In musty solitude? Why needs
Thou creep, peering, around the dead;
And, peering, creep like Lord Worm?
What wouldst thou of me?

THE POET:

Faustus, the wise tell us that knowledge is
power,
But never a word upon too much knowledge.
Tell me, sage — and wiser than thou wert, I
wot —
Can "a little knowledge be a dangerous thing"?
Rather, should we not say "too much is
dangerous"?

FAUSTUS:

Youth, heed not what drippeth from the
tongues
Of fools. 'Twas not the quantity but more
The quality of wisdom that destroyed me.
Devil-giv'n knowledge bringeth no rest,
No contentment. Heed me then; hear
What I would say; since 'twould
Seem you came for satisfaction.
Remember thou that knowledge is
To be coveted above gold and silver,
For if ye have these and have not knowledge,
Ye are as nothing — a mote blown by the
winds,
A grain of sand cast about by the seas. But
Be not so covetous of learning that
Ye blind thyself to all else.
Be satisfied with the knowledge that
Ye have, but be not so satisfied
That ye cease to learn: remember
No man can reach alone the ultimate peak of
learning.



PATTERN FOR '43

This essay, written by Alice McGinty, was awarded first place in THE TOWER Essay Contest.

Nineteen hundred years ago, almost nineteen and a half, on a night in December cut cold and clear as a sapphire, good news came. Angels rent heaven with the trumpets of joy, and from the convulsed womb of a woman breathed a new life, a new gospel, a new pattern of our thought — the law of love incarnate in Jesus Christ.

The new law made men free because it counted the fulfillment of obligation and duty as the labor of love and the privilege of the free. The new law made men equal because it made them brothers in God. The new law endowed the dignity of man. The new law was positive. It demanded participation, for it was the law of love in deed and in act, as we read in St. John this morning. The new law was natural. It was of the very essence and fibre of man. It defined the rights and the duties of the human personality.

From later convulsions came other laws, other patterns of our thought. Laws of protection, laws of re-declaration. Laws that restored the rights and dignity of the individual. And from the present clash of arms has been forged a new pattern for our thought. The new law is once more asserted, in the watchword of 1943; and that word is "global." This is a global war. We live in a global world. The shortest distance between two points is now truly the arc of a circle. The interdependence and unity of all human experience has been realized suddenly and expressed in this slogan. Already we have run the gamut of our new thinking from global to globaloney in the short space of a year. We've had to revise our maps in order to encompass our new circular perception. And when someone says, New Guinea, Tunisia, Chunking, Dutch Harbor, we immediately project them in their proper global sphere. The new way, then, is to think around, to think globally. And as we start thinking globally, we see new dimensions, or rather, rediscover the old ones. New relationships are constantly being grasped. Our global perspective sees that freedom means freedom for all peoples, all colors, all cults. It knows the kinship that is among all men. It recognizes the dignity of the person and of the nation. Its tolerance is fertile — a positive force for help and aid to the less fortunate. It realizes the responsibility of all for each and of each for all. We shall build for all mankind because we know now that we build nothing when we build only for ourselves. Our global perspective enables us to sow now and wait with patience and hope to reap the harvest. We have given up toasting our toes by the fire in readiness only to gather figs from thistles.

Inevitably, in drawing a circle one always comes back to the starting point. We, the nations of the earth, have done this. We have come home to our own pastures. And these, too, we now see in relation to this global earth, and it to them. Yes, we have told the Clean-Our-Own-Pastures-First people they can come out now. It's all right, only this time they must adapt their programs to the global pattern. And so our Beveridge Plan and our Social Security plans are righting our own houses in the new concept. The cynics will laugh at our feeble beginnings. It might very well be a matter of two steps forward and three back. No one denies that. But we've started. We are readjusting our social, our economic, our political, and our spiritual lives to the new pattern — new now for nineteen hundred and forty-three years.

If we trace our circle far enough, eventually we come to 716 Stevens Avenue. It's in the direct line of fire. We can't miss. What of us? What of our adjustment to the new way? You know, right now we're approximately five hundred yards from a main street. Surely, even from this distance we can-

not hope to ignore this new world. There are those of us with fathers, brothers, fiancés, in the fighting forces. We realize the change more acutely. The rest of us who are still basking blissfully in the noon-day rains, completely oblivious of the weather and all else, must one day awaken, or sleep forever. Those of us who are trying to drown our fears in coke must stop hedging the issue. And the bridge fiends who lower the portcullis and entertain a sublime indifference are kidding no one but themselves. The issue is able, ready, and waiting, and the only way to meet it is head-on. Dean Mesick said: "I admire your enthusiasm, but — be ready, be mature. You want to make a contribution. There is no place for idlers or incompetents in this struggle."

How can we at Westbrook be ready? We who are the spawn of a stagnant pattern. Our brothers are fighting for freedom, freedom from fear, freedom from want, freedom of religion and of speech. Our fathers are fighting for freedom. Freedom for the new way — because they believe in it. Do we? Shall we sacrifice our fiancés to preserve freedom of religion, only to duck chapel and avoid SCA services? Are we to be "free" to do just as we please — to cut Glee Club, for example, when and where we wish. Is this what our men are giving themselves for — the uninterrupted pursuit of our own precious whims?

Our men are assuming the responsibility — for you, for me, for the nation, for all men. They believe that each is responsible for all and all for each. Do we? Sixty, even seventy of us, often cannot remember to sign out for dinner. And when our food supply is low, perhaps the ration board will suggest cake. We care not what course others may take, but as for us, give us liberty, or give us responsibility.

Our men are dying because they believe in the communion of the human spirit, in unity, esprit de corps. Do we? They are participants. Many give their all. Do we? These are not rhetorical questions. If we believe in our men, we must believe what they believe. Or it is all a merry farce, and we should fight to preserve our sense of humor.

Madame Chiang Kai Chek in her recent Madison Square Garden address said that "the highest form of government comes through self-discipline." Empty phrases? Pretty syllables? The world thinks not. What do we think?

Selfishness has taken a heavy toll. Some of us know. Lip service to the ideal of democracy has taken a heavier one. That we are yet to know. Lips can say anything. But they cannot sing if the "internal props" are not there. Cooperation — the subordination of common wills — is the only basis for peace.

Let us begin now to respect that word, to humble ourselves to learn a new meaning, to be worthy of the blood. Let us join our spirits in one will. Let us participate in the classroom, in our extra-curricular activities, in all our campus living. Let us search our hearts, our heads and our wills for some small gift to give to us all.

Let us adopt the code of a Frenchman who in flames over Arras succeeded in adjusting himself to the new pattern: "I reject non-being. My purpose is to be. And if I am to be, I must begin by assuming responsibility."

ALICE MCGINTY.

Honorable Mention

SUNSET

Honorable Mention . . .

Sir Walter
Flung a rose-lined cape
Upon a heavenly pool
And bending low
He bade fair Evening cross.
The lady lightly
Stepped and passed
And left
A purple shadow.

JEAN JORDAN.



THE WOMEN

(HONORABLE MENTION)

I would be
a village housewife,
perfect and consoling,
with children at my knee
and roses at my gate . . .
great beams sooty from wood-fires
and the polished glow of lustre . . .
gay gourds at the windows
and geraniums in earthen pots . . .
and all my life a shining chain of days.

I would be
a city housewife,
laquered and gleaming,
with candles on my table
and the symphony on Sunday nights . . .
discussions on Freud at the bridge club
and the masseuse every second Tuesday . . .
cocktails for two at Tony's
and fittings Chez Madame at five . . .
and all my life a streaming comet.

I would be
merely a wife,
beautiful with giving,
with peace latent in my eyes
and someone mine to be for . . .
children, if he likes,
and warmth on cold mornings . . .
newscasts with the coffee
and "Information Please" to stump the experts
and all my life a pleasant shadow.

I would be
myself, an entity,
never lost in loving,
to argue Hemingway at noon
and Aristotle by the fire at night . . .
to agree on Parker and Saroyan
and read aloud fine poetry . . .
not to fuse my mind in stupid passion
but to have that passion and yet be free . . .
and all my life a breadth of learning.

JEAN OBRION, 1943.

STILL NIGHT, PEACEFUL NIGHT

(HONORABLE MENTION)

A still night . . . a peaceful night . . . hills, valleys, mountains, plains, completely dissimilar, yet given the aspect of unity by a blanket of snow spread o'er all . . . overhead, a pearl, the moon, set in black velvet pinned here and there with a sparkling diamond, a star . . .

Grouped in clusters over the hillside, fir trees casting black shadows on the snow . . . in the distance a small village . . . little houses bordering narrow streets . . . shutters and doors closed tightly . . . not a glimpse of light anywhere, save the moon and the stars . . . yet smoke rising from the chimney tops . . . not a person . . . not a sound . . . only black and white . . .

In the sky something moves . . . a star? but it is coming toward earth . . . a falling star? perhaps . . . another and another gleams here and there . . . the stillness is shattered by a distant rumble becoming more and more distinct . . . planes . . . swooping down, down, down, over the little town . . .

Doors are flung open . . . people fill the streets . . . the woods over there . . . a refuge? . . . they start toward the tall silent forest . . . a woman carrying a baby . . . a man laden with a few provisions gathered in haste . . . young . . . old . . . all who can . . .

From the very hearts of the planes, over-sized bullets rain down . . . the noise fades away in the distance . . . behind is left destruction . . . a schoolhouse, now merely a fragment of a building . . . the chairs of little children lie pathetically upturned in the street . . . a doll face down in the snow, just as she had been dropped by a small child urged along by its mother . . . a church — once . . . a cross, half-buried in shamble . . . still sending out into the night a gleam . . .

All is over . . . but wait . . . out of the depths of the woods comes a song . . . a group of valiant people . . . singing . . . a song of hope with a note of prayer in every voice . . . a village destroyed . . . a people shaken, yet, a people singing . . . the snow begins to fall . . . it envelopes the scene . . . a still night . . . a peaceful night . . .

JEAN PAGE.

A
D
V
E
R
T
I
S
E
M
E
N
T
S

Best Wishes

from

"Your Class Photographer"



Jackson-White Studio

PORTLAND

COMPLIMENTS OF
EASTLAND HOTEL
PORTLAND, MAINE
AND
W C S H

*Visit Our New
Junior Deb Shop*

FEATURING

Joan Miller Frocks



Owen Moore's

Portland, Maine

Compliments of
Milliken, Tomlinson Co.

DISTRIBUTORS OF

Superba Brand

Food Products

Compliments of

Universal Laundry

Cumberland Avenue
and Elm Street

“ Satisfaction Always --- All Ways ”

Compliments of

Porteous, Mitchell & Braun

Portland, Maine

Compliments of

Filene's

Portland, Maine

Smiley's

THE THOMAS SMILEY CO.

BE SURE TO SEE OUR NEW AND MODERN

Junior Shop

FEATURING

*Original Styles with the
Dash of Youth*

Compliments of

Bicknell Photo Service

*Maine's Largest
Photographic Store*

PHONE 2-5162

Frederic Libby

FORMERLY WITH DE PINNA, NEW YORK

Gowns and Sports

654 Congress Street Portland, Maine

Diamonds Watches

Silver



Carter Brothers Co.

Jewelers

521 Congress Street Portland, Maine

Compliments of

Carolyn's

599 CONGRESS STREET
PORTLAND, MAINE
Phone 3-2700

Coats
Dresses
Lingerie
Sportswear

Compliments of

Maine Savings Bank

Portland

Compliments of

King & Dexter Co.



HARDWARE PAINTS
SPORTING GOODS

Compliments of

Geo. T. Springer Company

JEWELERS SINCE 1870

515 Congress Street, Portland, Maine

Cash

Charge

Budget

“Everything in Music”



Cressey & Allen

517 Congress Street



BRING IN YOUR OLD RECORDS

The material is necessary for the
manufacture of new ones.

We pay 2½c (10") and 3c (12")—whatever
the condition

Compliments of

The Puritan Restaurant

Portland, Maine

Compliments of



Strand
Empire
Cinema

THEATRES

Loring, Short & Harmon

Monument Square, Portland, Maine

Stationery

Books

Artists' Supplies

Maine's Leading Sporting Goods Store

Compliments of

James Bailey Co., Inc.

264 MIDDLE STREET
PORTLAND, MAINE

Compliments of
Hannaford Bros. Co.
Portland

Compliments of
Valrio Beauty Salon
Portland, Maine

Compliments of
Day's Jewelry Store
STATE OF MAINE

Ida Goffin
Distinctive Apparel
for the
Junior - Miss - Matron

The
Greeting Card Shop

611A Congress Street, Portland, Maine

Cards
Gifts
Stationery
Lending Library

J. W. Minott Co.
FLORIST

"Flowers that last"

Portland

South Portland

Dow & Stubling

581 Congress Street
Portland, Maine

*Watches, Diamonds, Jewelry
and Silverware*

Mademoiselle Shop

Sportswear and Hosiery

Specializing in
Surgical and Style Fitting Foundations

145 HIGH STREET
PORTLAND



OUR ADVERTISERS ARE ALL ABSOLUTELY RELIABLE

PLEASE
PATRONIZE THEM

Autographs

Date Due

Date Due			

Demco 293-5

Desk copy

~~7889~~

1943

